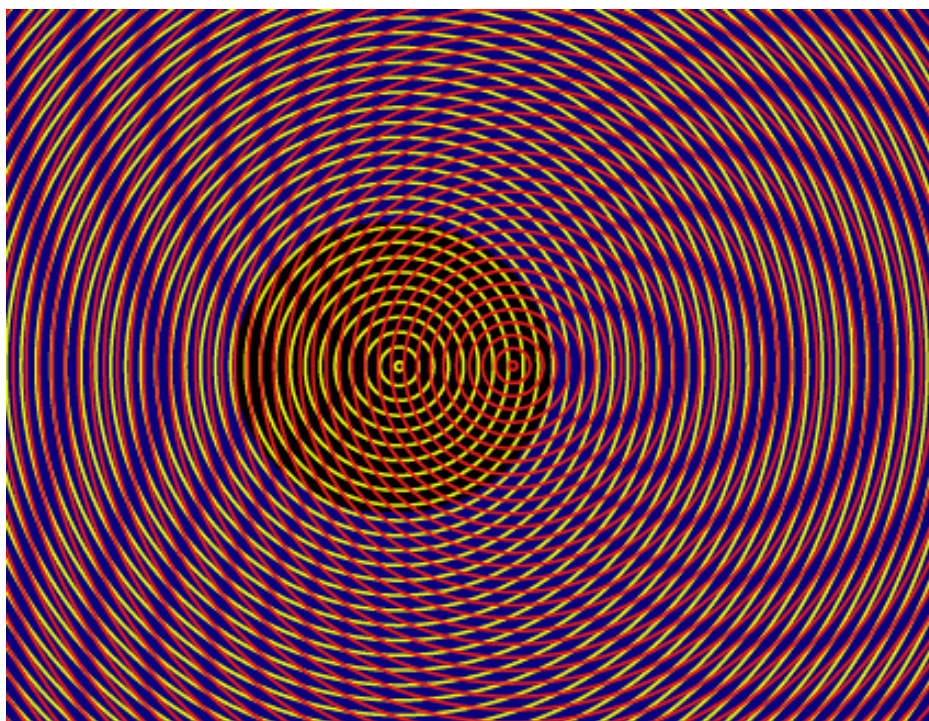


INVESTIGATION INTO
HARMONIC
41188837



© secondfield 2007

INTRODUCTION:

The following is a report detailing initial findings and speculation resulting from an ongoing investigation conducted in the Wellington / upper South island region of New Zealand in the year 2007. The object of focus is HARMONIC 41188837, a line of latitude with harmonic relationships to Bruce Cathie's unified equation set. This clue was presented in his last publication 'the harmonic conquest of space' 1997. A reproduction of the page (the epilogue) is shown below.

Epilogue

This book has been written mainly for the serious researcher who wishes to delve into the secrets of the harmonic structure of the Universe. I realise that the information enclosed is only a first faltering step into the concepts of harmonic mathematics, but I am quietly confident that the values demonstrated are reasonably accurate and that many scientific projects are in progress in various countries around the world that make use of this hidden knowledge.

I have discovered a number of structures myself that conform to the harmonic concepts. The geometric positioning and relationship with other sites sometimes suggests that other, more secret activity is taking place in certain areas.

All of this unpublished information I have filed and lodged in safe keeping, and I have also forwarded copies to higher authorities.

Certain transmitters and power stations fall into this category. Some of the interesting harmonics evident are displacements of 509.11688 minutes of arc and 208.635617 degrees between installations, and various latitudes and longitudes that give specific harmonic resonances—one value being latitude 41.188837 degrees. The clues to the harmonic relationships are to be found in the demonstrated unified tables and unified equations. The unified equations have been tested and found to be correct.

Billions of dollars are being spent on this activity—and it's our money. We have a right to know who is controlling the secret projects and what the final outcome is going to be.

I have stated before in my writings that we are being conned, and the present uncovered evidence more than reinforces this statement. In the past, thousands of my books were destroyed without explanation, and my work was virtually forced off the market. I was informed by an intelligence agent some years ago that my work would be suppressed, and "they", whoever they are, have almost succeeded.

Almost—but not quite.

41°11'

It is recommended that the reader of this report should have a firm grounding in the theories/research and work of Capt Bruce Cathie, who first posited the existence of this 'network'.

Some of the relationships concerning this area which have come to light are:

- Detailed witness accounts of UAP (unidentified aerial phenomenon occurring close to the vicinity of this geographic.
- The possibility of ancient archaeological sites being present, close to this harmonic.
- Various establishments of a highly technical nature located on or around this harmonic.
- Historic representation of anomalous activities in the area.
- The possibility of artificially created inter-dimensional windows and power tap's relating to Bruce Cathie's harmonic grid research.
- A proposition as to why Persistent aircraft contrails are observed frequently in the surrounding areas.
- The possibility of an underground installation

This paper is presented as very basic intuitive research, of which much more thorough work and investigation is required. This is ongoing and findings will be presented when uncovered. The reader is encouraged to post all comments to second.field@gmail.com

“A MAN GOES TO KNOWLEDGE AS HE GOES TO WAR. WIDE AWAKE, WITH FEAR, WITH RESPECT AND WITH ABSOLUTE ASSURANCE.”

Carlos Castaneda

THE SIGHTINGS :

The following pages contain a series of UAP sightings investigated by the author. These are from the official archives of the UFOCUS NZ group of which the author is a member.

Classification: NL, Type I d, Type III b, c, Type V a

Date: Sunday 21 May 2006

Time: 5-6.30 am

Place: Rimutaka Ranges, Waiarapa, North Island, New Zealand

Duration: Approx. 1 hour

Description: The sighting took place when the witness and his companion were travelling to Lake Waiarapa early Sunday morning to go duck shooting. The reporting witness has over 30 years experience hunting and tramping in the Rimutaka Ranges. The companions travelled out through Upper Hutt, over the Rimutaka Ranges, and then proceeded through Featherstone into the Martinborough area. Their final destination was to be a 'maimai' (camouflaged duck shooting shelter) located near Kahutara, Lake Waiarapa.

It was early morning; the conditions were clear at the time, with no wind or moon.

The witnesses first spotted the unusual light between 5 and 5.30 am, when driving through Kaitoke, north of Upper Hutt on the approach to the Rimutaka Ranges. It was directly ahead of them over the hills; a large, bright purpleblue light, which changed to yellow and then white. The light initially appeared to be oval in shape, but its shape then became distorted or fuzzy. As the witnesses drew closer to the hills, the light moved and suddenly appeared very close to them, almost over them at one stage, before returning back to its original position at approximately 30-35 degrees above the ranges. They noticed that there was no sound accompanying the movement of the light close to them. The witnesses described the light as having soft hues that appeared to glow. They described the size of the light as 'substantial'.

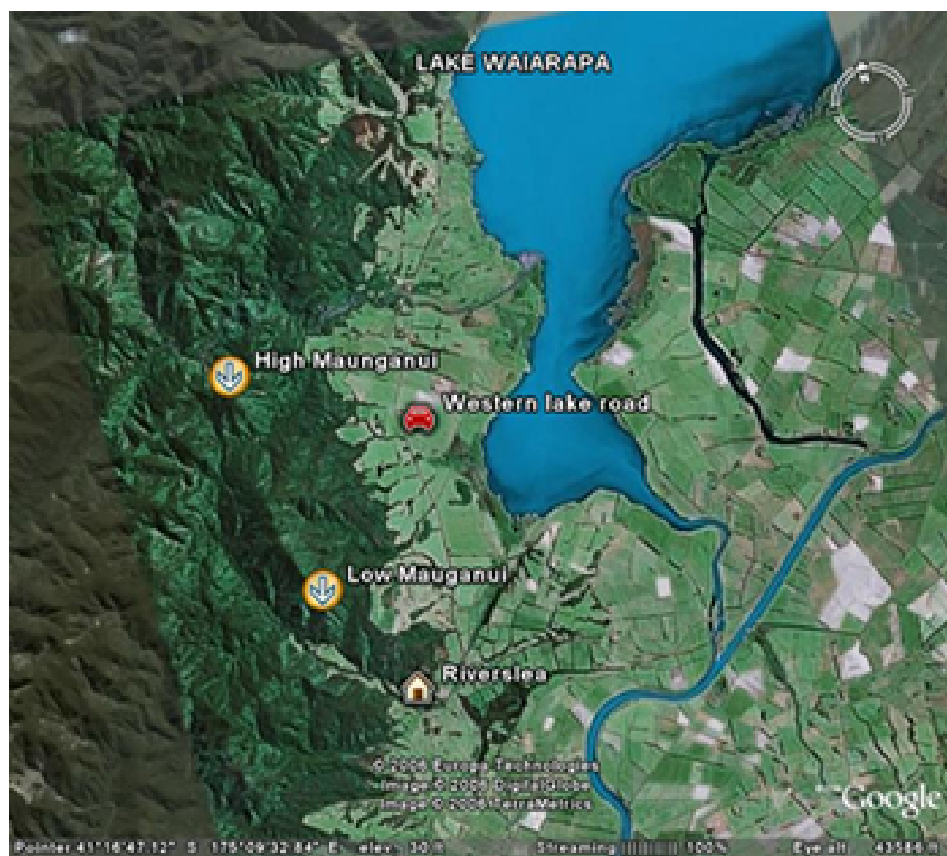
The light remained in view for approximately another 20-25 minutes until the men drove over the ranges and down the other side towards Featherstone. At this stage they lost sight of the light because of the close proximity of hill ridgelines (see Map 1). The men continued on their way discussing what they had seen. (The reporting witness had observed a similar unusual light on the West Coast of the South Island many years ago).

Upon arriving at the maimai, located at the north eastern end of Lake Waiarapa, the men busied themselves preparing for the mornings shooting. Once settled in the maimai, the witnesses were facing in a south-westerly direction overlooking the lake, waiting for ducks to show up! The sun had not yet risen.

Shortly after 6 pm, the men noticed a glow behind a hill some 12 kms distant (an estimate). (The hill is called Maunganui; see Map 2). Near the hill was a flat plateau along Western Lake Road. The witnesses observed this whole area - and the surrounding hills also - light up as if in daylight, and they saw a glowing light visible above Maunganui. This brilliant expanse of light remained constant for approx. 10 minutes before suddenly extinguishing, leaving the area in semi-darkness again before sunrise. The area that was lit up is sparsely populated, with only a few farms in the area. Both men were left baffled by this strange spectacle.



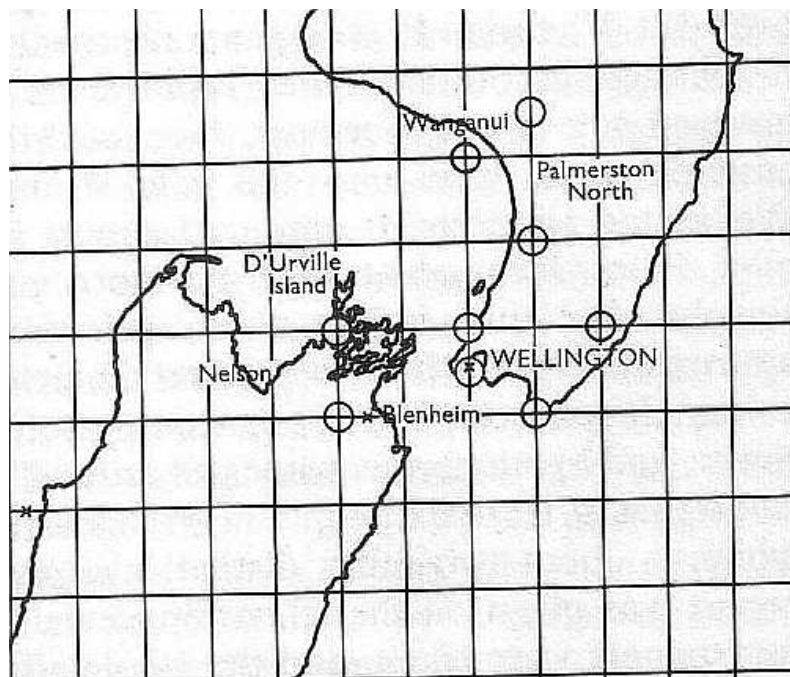
Sighting area



Zoom of the above area

At the time of this sighting the investigator (myself) had no idea of the proximity of the sighting location to harmonic 41188837. It was not until much later that I discovered the significance of this and began to make a more detailed study of the surrounding area. Pending contact with the witness again, I have a sneaking suspicion that the sighting was 3-4kms further north than first realised. The witnesses have yet to be contacted again to confirm the exact location of the 'lit up valley'. The reason for this will become more apparent as we move further on into the investigation.

The original reproduction of Bruce's grid is shown below. Note how close to the sighting area the harmonic grid is placed. It almost runs straight through the area we are investigating (lake Waiarapa). Generally according to his theories these lines are part of an electromagnetic / geomagnetic-ley / scalar energy type grid for the use of these manifestations / craft. It is presupposed to be artificial, but this may not be entirely the case. It seems to have been changed and maintained over a very long time period indeed. Please take the time to study all of Capt Cathie's Books to grasp the reasoning behind this research. Without a reasonable understanding of his research and findings the proposals presented here will appear unfounded.



Sighting II

Classification: NL, Type III a, b, c, e

Date: Tuesday 1st August 2006

Time: 8.50 pm

Place: Maungaraki, Lower Hutt, North Island, New Zealand

Description: A witness was standing on his back doorstep, when he noticed a beam of light extending over a hill approx. 1.2 kms from his house (looking in a northerly direction over bush-clad hills). Suddenly the beam disappeared and a large, bright yellowish light appeared and hovered soundlessly over the hill around 300-400ft above the summit. The witness watched it briefly and then called another witness from inside the house to video the light (captured on digital camera). After 30 seconds or so, the light began to move around above the hill, changing direction frequently. Two other lights began to flash forming a triangular shape in the sky, two bright yellowish/white and one orange. The lights flashed on and off randomly, although they all moved about in unison or formation, as the light/object moved about. The witnesses believed the lights were all on one object, rather than a group of three objects. They considered the initial sudden appearance and the 'behaviour' of the light/object very strange. The video footage shows a 'falling leaf' or 'swaying' type of movement, with sudden changes of direction, followed by a rotation of the three bright lights in triangular formation, executing a flat, angular turn on a plane (not banking like an aircraft), blunt-end-forward, as the light/object began to move off. The light configuration appeared to be on a large, flattish object, possibly triangular. The sighting lasted around 2 minutes and ceased when the lights "just flicked off like a light switching off". Air Traffic Control has established that it was not an aircraft. The possibility that it may have been a police helicopter was ruled out when ATC viewed the footage, as the light configuration did not resemble that of a helicopter. The entire sighting captured on video shows 9 out of the 15 main characteristics of 'black triangle' craft, sightings of which are increasing worldwide. At the time of this sighting, reports were made of unusual lights in the night sky all over the southern North Island.

This case is still under investigation and research.

In progressing research into this case, and while awaiting further witnesses to come forward, I chose to examine the immediate electromagnetic environment in which the sightings took place. Although not physically obvious, since 1947 (the year of mass UFO sightings) our planet has become a veritable electromagnetic hedgehog, which has woven a highly complex, technologically driven, invisible web around our physical environment. It is interesting to observe the first mass deployment of high frequency / high-powered radar devices were commissioned around 1947. The planet had not previously seen such mega-watt high frequency devices focused into the ether. On a hunch and following the clues of Bruce Cathie I decided to focus my initial research in this direction.

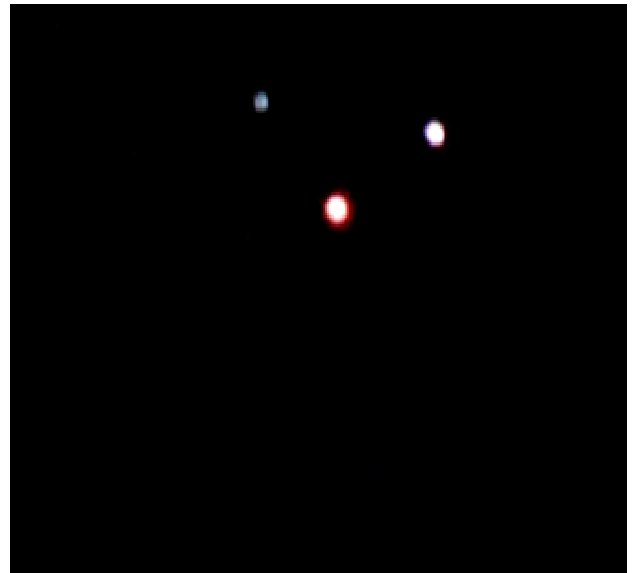
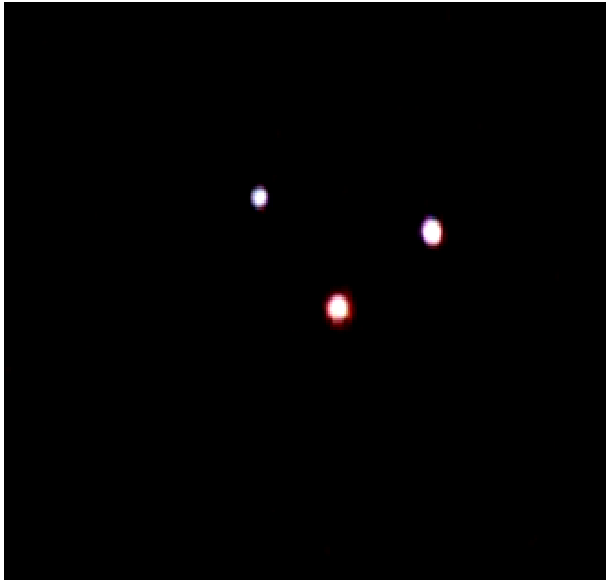


Figure 3: Triangular arrangement of lights above Belmont hill august 2006



Figure 4: Belmont hill

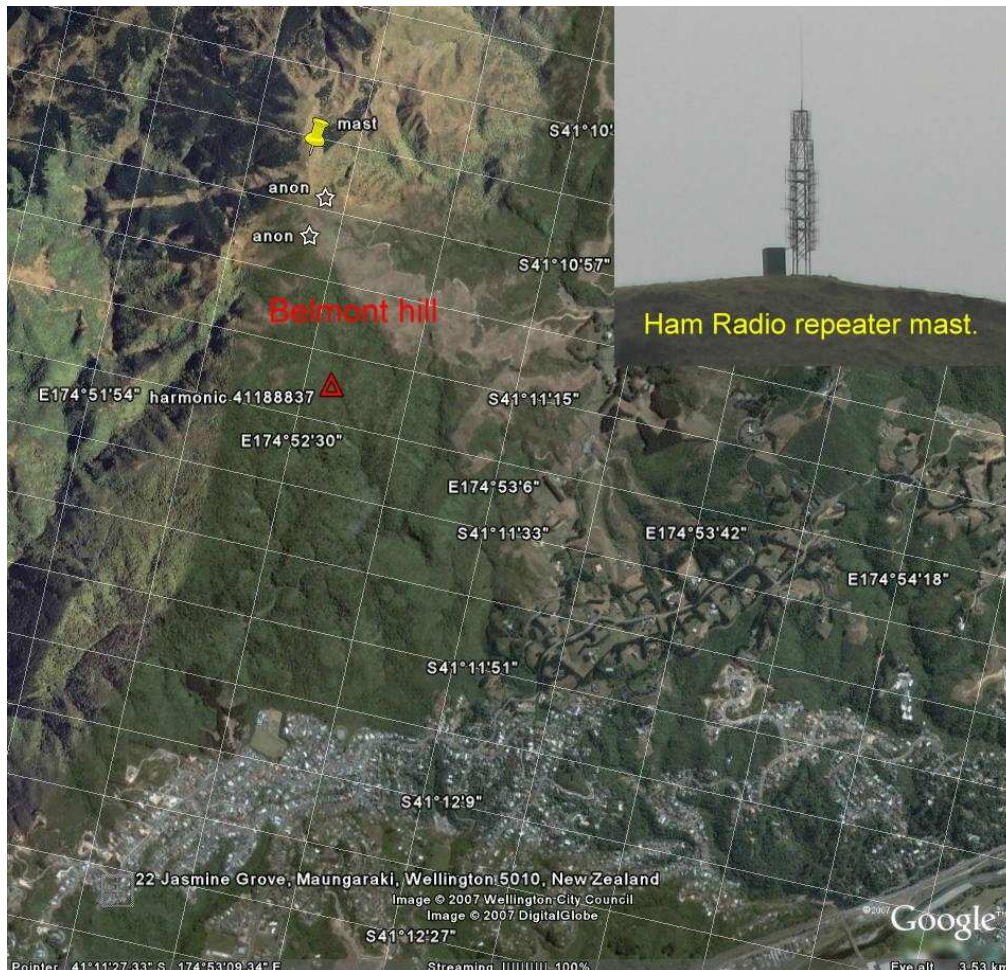


Figure 5: Belmont hill and repeater site. The object appeared to be moving over and around the top of the hill.

The only RF (radio frequency) device in the immediate vicinity of the sighting is an amateur radio repeater that is situated on top of Belmont hill. This is looked after by the Wellington VHF group. It's operational functions are as follows:

- Amateur 2m repeater. 147.100Mhz in, 147.700Mhz out
- Amateur 70cm repeater. 434.875Mhz in, 439.875Mhz out
- Amateur TV repeater. 431.250Mhz in, 615.250Mhz out

There are possibly amateur beacons operating on 32cm (925.2750Mhz) and 5cm (5760Mhz) also co located. The site draws power from the 500kv DC trunk line crossing Cook straight on its way to Hayward's hill. A 15kw transformer is utilised to step the voltage down for equipment power requirements. This trunk line in itself would create a huge static field. It is interesting to note that the frequencies 430Mhz-450Mhz have received coverage in UFO/MK ultra literature (Preston Nichols, Wilhelm Reich, Nick Begich and Tom Rifat). Legend has it etheric radiosondes working to Reich's principals and operating on these frequencies were utilised during the 50's. A

specific frequency of 435Mhz has been related to the appearance of UFO's, Preston Nicols mentions this information came from Dr Wilhelm Reich's research. This frequency is regarded in some circles as also the seat of our consciousness. Extensive MK ultra behavioural modification type experiments (Dr Ross Adey, CIA) were conducted utilising this part of the spectrum. According to some this is the base frequency of our 'reality'. It is also interesting to note that a range of satellites called 'earth exploration satellites' operate in the frequency range 432-438Mhz. If this is multiplied by 2.88 (harmonic of twice the speed of light, to which Capt Cathie's 'grid' is tuned) then 1244-1261Mhz becomes apparent. This part of the spectrum again is allocated to 'earth exploration satellites' along with 'space research satellites'. These bands stretch from 1215Mhz to 1427Mhz. Converted to frequency in 'grid time' the following amateur radio bands show affinity with the Harmonic circumference of all atoms. It is interesting to note that the 2m ham band (144Mhz), the 70 cm ham band (432Mhz) and 23cm ham band (1296Mhz) are all multiples of 3. Converted to Bruce Cathie's 'Grid time' (8/9ths normal time) the following correlations become apparent:

144000000 hertz / 9 x 8 / 1 = 128000000 grid hertz

384000000 hertz / 9 x 8 / 1 = 384000000 grid hertz

1296000000 hertz / 9 x 8 / 1 = **1152000000** grid hertz

The figure 1152 immediately is recognised as the harmonic circumference of all Atomic structures.

The reader is encouraged to study Bruce Cathie's books and explore all the harmonic relationships for themselves. I have found going back over Bruce's Books time and time again never fails to unlock some new insight into the structure of our 'reality'. His book 'The Bridge to Infinity' gave me staggering revelations into the nature of dimensional 'networking' (for want of a better term ;-).

CYMATICS

The science of 'Cymatics' demonstrates sound affecting physical matter by the interaction of acoustic vibrations to produce geometric form in sand or water. Mathematicians studied the patterns discovered by the intersection of two sound wave curves and from this complex lattice/geometric arrangements were produced called 'interference patterns' emerging from the colliding waveforms. These are called Bowditch / Lissajous curves. The patterns arose from frequencies (or

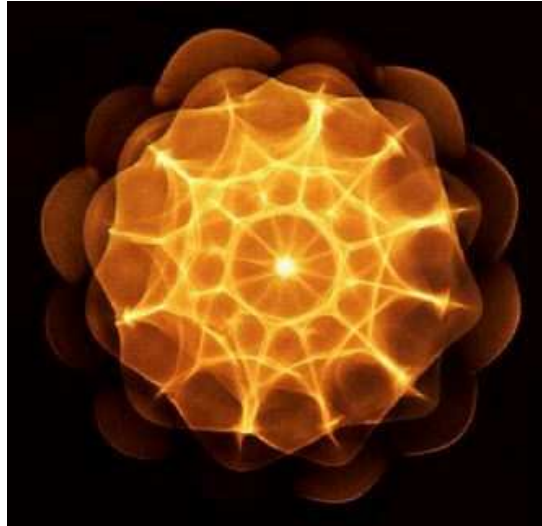
oscillations / vibrations per second), which had simple whole number ratios to each other. The ratios themselves are of great significance, and according to John Michell, the international cosmologist, identified 'harmonic 1152' as Plato's 'moving finger of eternity'.

The reference here to a Plato number is most appropriate as many of the Bowditch/ Lissajous curves appear as 'polygons' (many sided figures) directly related to the 'five regular Solids of Plato', including pentagons (5-sided) and hexagons (6-sided), now identifiable in the helical structure of DNA (see: John's *Crooked Soley* compendium). At certain frequencies anti gravity effects are observed within particles undergoing cymatic influence.

The collision of waveforms utilising very high frequencies produces geometric shapes in 3(4?) dimensions invisible to us!. Again, It is interesting to note the modern era of ufology began in 1947 when there was a proliferation of high power, high frequency radar deployed around the world (400-450Mhz!).

In Bruce Cathie's book 'Harmonic 695' He describes finding antenna installations, which have significant geometric relationships with his UFO grid. Many of these antennae belonged to Ham radio operators at the time, and were identified as such. Perhaps the operating frequencies allocated to the amateur radio community may serve a double purpose to those 'in the know' so to say. Although to be fair back in the old days any home built radio equipment required crystal oscillators tuned to specific frequencies, but also radiated (or vibrated) at multiples of the fundamental frequency. These were called 'harmonics' and for any given fundamental frequency a crystal oscillator would also create 'harmonics' that were strongest at odd multiples of the fundamental (3rd, 5th, 7th). Even order harmonics (2nd, 4th, 6th) are about 6db down on the odd multiples. This translates to ¼ the effective power of the odd order harmonics. That is a clue in itself. This made it a bit easier to build oscillators tuned for the ham bands when they were at odd multiples of the fundamental frequency. It would be a simple case of isolating the chosen harmonic through filtering and amplifying it to workable levels. RF is a form of energy that has many uses today. Before electronics became a popular word the term for radio and electronic work was 'applied physics'.

The possibility of a network of terrestrial radio and satellites being set up with parallel operational capabilities is not unfeasible. They possibly could serve the purpose of dimensional experimentation utilising key frequencies to manipulate matter, space and time.



An Example of a geometric pattern in water illuminated by a laser beam produced through Cymatic's.

Both the previously detailed sightings occurred in 2006 very close to Harmonic 41188837. The map shown in figure 4 shows this relationship and also Arapawa Island, which will be discussed further on into the report.

THE SIGNIFICANCE OF HARMONIC 41188837

Harmonic 41188837 is a line of latitude expressed in degrees only (41.188837). This converted to degrees, minutes and seconds of arc is 41deg 11' 19.8132". When working with Harmonic math decimal points and zeros are ignored. Certain areas of latitude and longitude have been found to have direct co-relations with gravity, mass of the atomic structure, the speed of light and all their reciprocals. As stated before, the reader is expected to have a familiar understanding of the work done by Bruce Cathie to be able to delve into this area of thought, and no comprehension will occur until this is so.

Harmonic 41188837 has a direct relationship with the reciprocal of the speed of light

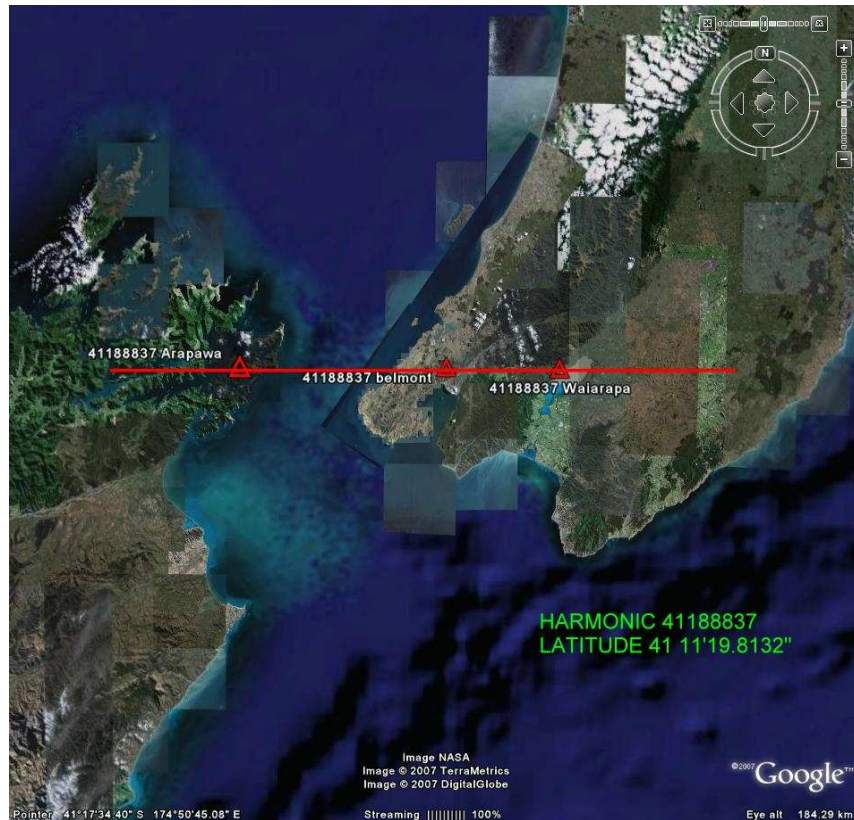


Figure 6: HARMONIC 41188837, New Zealand.

Technical Installations associated with HARMONIC 41188837

Often, Installations of a technical nature are prominently associated with harmonic/geometric sites. Bruce's books give examples of these. With this particular harmonic it is interesting to note that Avalon TV and Broadcast studio sits not 100 meters away from this particular harmonic line. It can be seen for miles and looks out of place in the surrounding suburbs which are primarily residential. Avalon also sits bang in the middle of a grid square. Not far from this building is the department of nuclear and geological sciences, another hi-tech organisation.



The possibility of ancient archaeological sites being
present along HARMONIC 41188837

Early on in my investigation, whilst studying google earth renderings of the Harmonic line, I stumbled across an area very close to the Waiarapa UFO sighting which apparently seemed to consist of geometric formations buried in the hills. After scrutinising the surrounding areas I could find no similar features. It may have been the work of an overactive imagination at the time but I include these in this document for purely interests sake should the reader decide to look into this themselves. Please take the time to look closely at the maps below. There has been word on the WWW lately of pyramids discovered in Bosnia, which at some stage were buried during the course of history. An excavation of the area has recently begun. There is also evidence emerging of many more ancient structures found scattered around the globe, although mainstream media and traditional archaeological representatives are loath to acknowledge these discoveries lest they upset the orthodox, historical 'applecart'. I do not profess to have discovered anything here, but use this as an example of keeping our perception and awareness open to the possibility of new discoveries.

Items A, B and C may require closer scrutiny. They appear to be circular depressions or raised areas evenly spaced apart. One is obviously a pond. They each appear to have a concentric ring around the outside. This could be the result of early European settlers or previous Maori habitation of the area. They seem man made at first glance. The copse of trees forming a perfect right-angled triangle is interesting also. Maybe a subtle hint perhaps by persons who have a full understanding of the area? The main feature appears to be a three-sided pyramid. A 90deg icosoles form's the front face (closest to the lake). The length of the sides of the face appear to be approx 300meters long. A faint line can be seen running off the back of the feature roughly where one could expect this to be if it were indeed a three sided pyramid. Photographs of the area have yet to be taken and further investigation around the area.



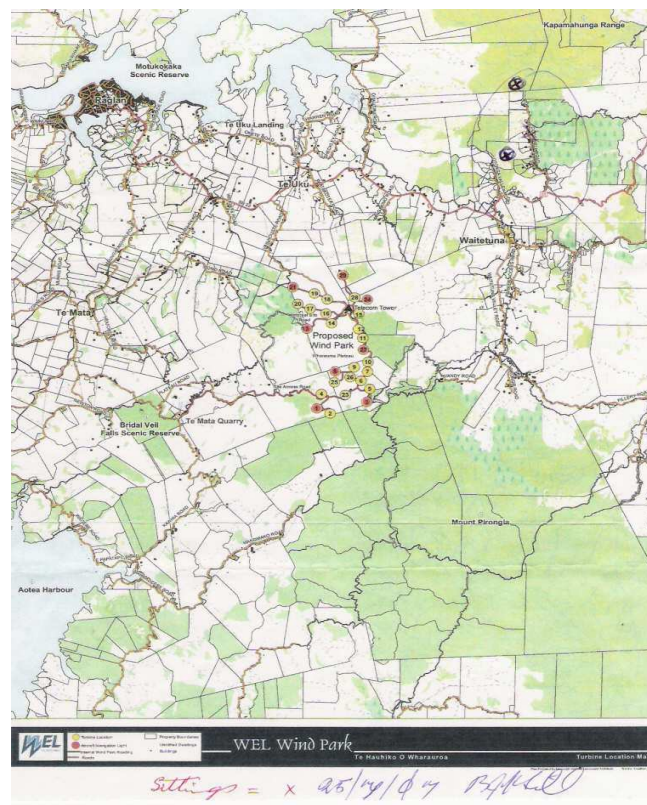
Figure 7: Waiarapa features and the proximity to harmonic 41188837



Figure 8: Lake Waiarapa and anomalous feature

Another area which has had UFO activity reported in is in the west Waikato. The sighting, which involved a tubular type craft with stubby wings on it, was seen twice in the vicinity several years apart. What seemed interesting to me was the 'hill' that it flew by. The first thing that struck me was its slightly symmetrical shape, it could possibly be a very ancient mound or buried structure. The pictures below detail the area and the hill can be seen in the background. I have yet to travel to the area to see this for myself.

37deg 48'32" S / 175deg 02' 10" E



Strange Aerial phenomenon witnessed in the vicinity

Over the past few years an unusual occurrence has been taking place in our sky's commonly referred to as 'chemtrails'. They are the cause of much consternation and concern in alternative media and environmental groups. Basically speaking these are the persistent contrails left by high altitude aircraft during their passage. Persistent contrails were not a common occurrence in the past and much alarm has been raised by the overwhelming appearance of these trails. Some theories are they are noxious poisons sprayed to weaken the immune system of populations, Weather modification operations and / or electro magnetic experimentation / manipulation of the atmosphere. The United States is inundated with this occurrence, and to anyone who cares to notice the extent and impact these things have are unlikely to remain ambivalent about it for long. There are many theories and speculations as to the nature of these occurrences, but in some cases, the inconsistent and strange nature of this phenomenon and associated disruption of the sky may point toward more esoteric technological reason(s). There may be many purposes to these trails, what sky watchers are fairly certain of is they are having a profound effect on our living atmosphere and it's environs.

Throughout the history of ufology unusual cloud formations / trails have been a recurring theme which deserves closer scrutiny. Indeed, many people are beginning to view our sky as a living, breathing organism complete with mysterious creatures barely perceptible to our limited senses.

When one observes the sky for a prolonged period of time completely different outlooks and patterns emerge stirring a sense of wonder. Practical observation confirms the unusual nature of what be the greatest mystery of all. What goes on in the etheric world. Trevor James Constable, a native New Zealander wrote extensively and carried out practical scientific work into the nature of the etheric world. Infrared photographs taken by him and several others confirm that birds are not the only things which inhabit the sky. The theory that UFO's travel here across vast distances via conventional propulsion may be well off the mark when one considers the nature of the electromagnetic spectrum and the limitations we have when perceiving this. Sylphs, cloud ships, materialisations of barely organic forms seem to be occurring more frequently and in certain areas of our planet. The whole atmosphere possibly could be undergoing a vibrational (frequency) change in its basic makeup. This could be naturally or artificially induced by the means of technology. A reaction may be happening in our sky's causing slight dimensional rifts to appear and a proliferation of anomalous, perceivable displays to

become apparent. A group of friends and myself have been avidly documenting and observing this development for some time. Below are some photographs taken from regular vantage points around the Wellington region stretching into the lower south island. This is the realm of 'fantastic reality'. Prolonged observation enables one to utilise subtle feats of perception to pick out inconsistencies to an otherwise normal occurrence when viewed with an untrained eye. Whitish, floating Orb's have recently been photographed (and filmed) regularly around the area, especially with persistent trails present. 'Awakekiwi' has posted an excellent video of one above Wellington airport on 'youtube'.



Of the many flights that overfly Wellington each day, this is the one of the few that leaves a persistent trail. It formed in one minute and ended as abruptly as it began. Observation through binoculars proved difficult to even identify an aircraft at its front, although what I would term an 'object' could just be seen. The entire length would have been a couple of miles at the most. I have seen these incredibly short trails form in exactly the same place in the sky time after time. Sometimes they will form perpendicular to 'regular' persistent contrails within a very short period of time. I stress this was the only trail visible during the day over Titahi bay / Porirua. It appears to be over/ or in the vicinity of Arapawa Island. Other trails form across the city and spread out completely obscuring the sky and rendering it into nothingness. The effect is quite severe and some days you can tell when it will occur by viewing the sky during the early morning. July 26th 2006, May 14th 2007 were an example of two days of extreme activity in the etheric domain. A you tube mini doco was produced on the former day showing this unusual atmospheric activity.



Shortly after the trail had formed (approx 1-2 minutes)
the surrounding cloud took on unusual appearances and
forms (see oval shape in the darker cloud below)



Some other pictures from different days around the same
vicinity exhibit the same striking effects.



This sequence of photographs was taken in 2003 over the suburb of Tawa looking west toward Titahi Bay / Porirua. They show an anomalous object leaving a persistent contrail,



The photographs below were taken by a friend over the Marlborough region in 2004 and show a similar object leaving a persistent contrail.



Below are the enlargements which definitely are not those of a conventional aircraft...



Another, more recent example comes from an area of the far north of New Zealand called Ahipara, where a UAP had been spotted a week or so previously. A strange bright persistent contrail was seen and the people who witnessed and photographed it were quite taken aback by its presence. They stated in all the years they had visited the area and lived locally, they had not seen anything resembling this particular trail.



The 'Ahipara' UAP sighting close-ups reported in the 'Northern news' Aug 29th 2007 strange contrails never observed in the area before were seen after the incident. Below is a picture of a contrail in the area one week after the incident and below that is an enlargement of the trail. The person's who photographed it had never witnessed a contrail in the area before. They commented on its unusual reflective and 'bright' appearance.



There is something uncanny about certain types of persistent contrail. If observed over long periods of time, they can take on a life and meaning of their own, perhaps indicating the presence of a greater mystery.



Surrounding cloud formations look 'stressed' and agitated by some unknown force or frequency signature.

These are often an indication that something is 'up' in the etheric world. Scalar or Radio frequency influenced weather engineering is a possibility. This technology is known and was in fact banned by the UN as far back as 1977.

SYLPHS

-**Sylph** is a mythological creature in the Western tradition. The term originates in [Paracelsus](#), who describes sylphs as invisible beings of the air, his [elementals](#) of [air](#). There is no substantial [mythos](#) associated with them

Sylphs are beings of wide-open spaces and the air. Sometimes they are depicted as cloud beings. Sylphs are responsible for the myths of "angels", the winged protectors of the Garden of Eden. Their attitudes embody the extremes of nature, mercurial and intense. Most of all, they defend the high peaks and wilderness mountains that are their home.

An example of 'Sylphs' or etheric sky elementals is shown below. These were taken by a friend of mine over the hills surrounding Wellington. There are many examples globally of these beings; even efforts of communication

with and summary of this phenomenon have begun. They are generally viewed as benevolent, even angelic. These pictures are courtesy of my friend Jeremy.



Utilising intuition, one can quite readily differentiate between normal cloud formations and these etheric manifestations. Once completely comprehended a person experiences a sense of beauty, wonder and awe. A strange feeling of distant loss often accompanies the sightings. They seem like allies found in times of turmoil and questionable existence, manifested by a purer form of

consciousness. Often on days of heavy trail activity they flock to affected areas, clearing the sky of negative influence. Personally to me, who was once very sceptical indeed about such manifestations, I am now starting to look at the world through different eyes. Some days it appears as if a battle is raging above our very heads. Friends and myself have witnessed these manifestations clearing sections of the sky when heavy trail activity is present. Classically trained scientists and meteorologists no doubt will scoff at such assumptions viewing things with cold scientific pragmatism and institutionalised thought patterns.

Personally, I feel it will be tragic day if we ever lose our sense of wonder and mystery to utilise the power of imagination to 'tune in' and describe our physical reality. Modern day science has a bad habit of 'freezing' the subject it is studying and breaking it down to its base, in-animate components for analysis. Hollywood blockbusters and simplistic, over emotive, dramatic TV fill the gap where our imaginations used to dwell. The broad and diverse human capacity for culture is slowly being eroded into a mindless 'one size fits all' manic pop culture. The beauty of living language is degenerated and narrowed to a few words describing polarised emotional states....

Assembling us and our reactions like binary machines.

Overleaf can be seen some more examples of strange objects manifesting during periods of persistent contrail activity. Pictures from 2006 in the Wellington region. The pictures shown are taken from one frame with zoomed in sections. It pays to scrutinize any photographs you have taken closely after observation of the sky... At first glance, nothing seemed apparent, but a sharp-eyed friend pointed out the small object(s)? just visible in the enlarged frame.



Below is the second sequence... Again from 2006





The passage of anomalous aircraft traversing our skies is not that difficult a theory to accept when one considers the nature of modern CAA radar operation. Unlike active radar where all radar reflective airborne objects are detected, passive radar operates and gathers returns from aircraft only with a installed transponder operating on the receive frequency of the ground station. This transponder sends out the identification details of the aircraft. Any aircraft not fitted with a transponder will not register a return at the ground station. The following sequence of pictures reflects the visual impact of persistent contrails left along non regular flight vectors in the Wellington region.



The trail to the left is spreading out to form an opaque haze...



A cross hatch pattern immediately becomes apparent.
Advanced weather modification technology? Etheric
Engineering operations? Bio warfare? UV Sunscreen No one
knows for sure or maybe all of the above. It is happening
in all the UN countries of the planet.



Low altitude persistent contrails off regular flight vectors. Perpendicular 'grid' type pattern. This activity was most intense in the years 2003 - 2006. They would continue throughout the day to eventually completely obscure the sky. For a video record of a heavy spray day complete with bizarre footage see the following link..
<http://www.youtube.com/watch?v=J81zy9LHzCE>



The end result: an inside out sky... Make no mistake that cloud cover pictured you see is NOT natural.

The concentrations are most apparent in NZ around the Marlborough sounds / Nelson Bays area.

NOVEMBER 18TH 2007





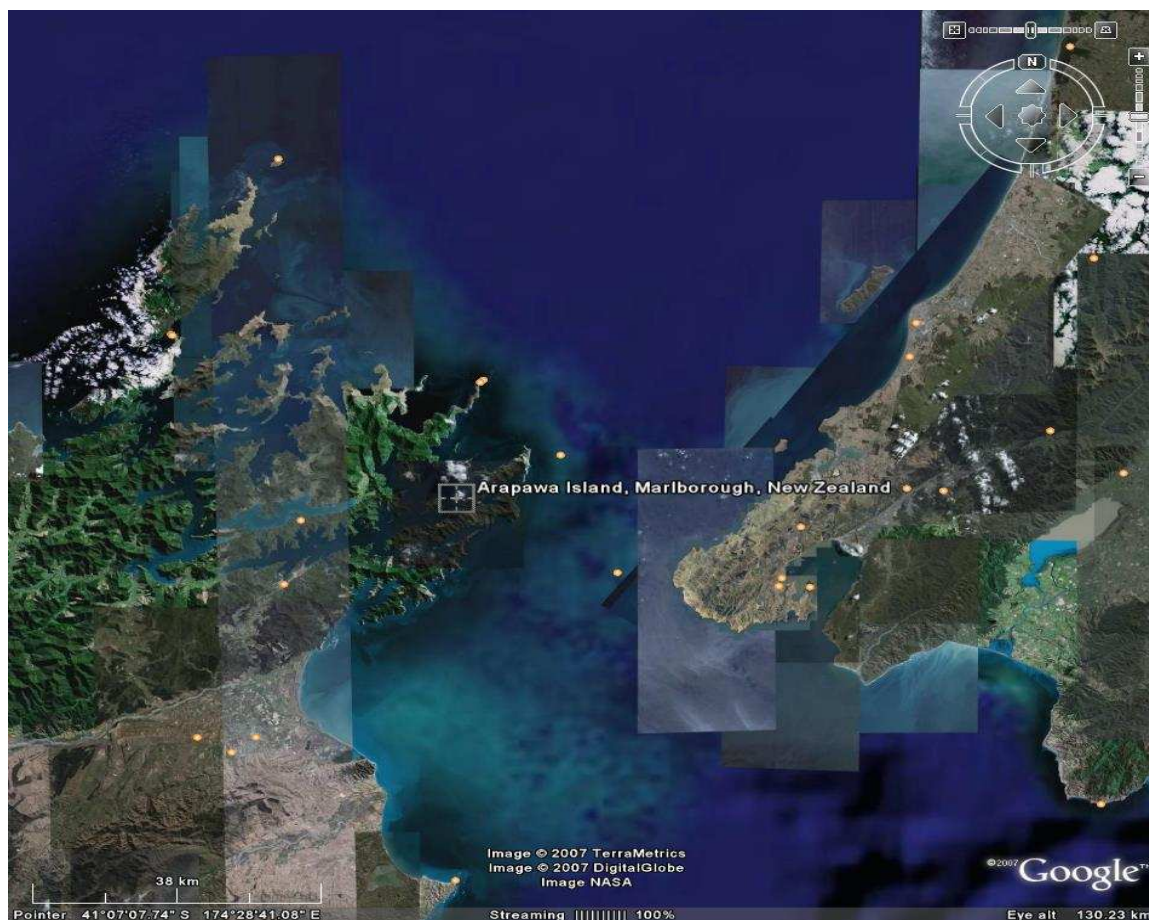


With the onset of the evening the sky was completely woven with this artificial cover. It extended out over Cook straight and into Marlborough. It did not resemble anything remotely natural. A hazy, discoloured sunset was the result. While observing the sky in this state all sense of perspective is lost, a very disorientating state of affairs. As of this writing a YouTube mini doco will be made covering the days happenings.



SYLPH?

THE ANOMLIES OF ARAPAWA ISLAND



Arapawa Island situated in the Marlborough sounds at the tip of the south island, New Zealand has long been considered a place of mystery. Along with the general Marlborough area, including Blenheim which has an exceptionally high percentage of NZ's UFO sightings. Arapawa Island lies directly on Harmonic 41188837. Betty Rowe, has lived on the island with her family since emigrating here from the US in 1972. She has written a book about life on the island (Arapwa - once upon an island). Tragically from 2000 the area has fallen victim to disease (plant and animal) directly resulting from Betty's first sighting of persistent contrails being observed in the area. This has been documented and reported in the excellent website 'Mysterious New Zealand'. I urge anyone who is not already familiar with it to read it.

Arapawa (Arapaoa being the traditional name meaning path, Ara - Paoa, mist) has long been associated with strange bobbing lights, disembodied voices and appearing and disappearing islands. The following is a recollection of a friend of the Rove's who had witnessed first hand the mysterious disappearing Island...

"Rex, a frequent visitor to Aotea, was a bit sceptical about all these stories of bobbing lights and mysterious voices until he had his own unusual experience.

Returning from a walk, he came into the woolshed where Mitch and Walt were shearing. The usually calm, cool and collected Rex was in a state of high excitement for, while he had long ago learned, like the rest of us, that the unexpected is often the norm at Aotea, he had not been prepared for the events that had sent him scurrying home from his morning walk,

'You'll never guess what I've just seen!'

The accent was on the 'never' and Rex took a physical step backward in disbelief when Mitch, without missing a stroke, answered calmly: 'The disappearing island.'

'How did you know?' Now the accent was on every word.

Straightening up, Mitch exchanged puzzled looks with Rex, 'I don't really know why I said that. It just came into my mind.'

No stranger to Arapawa, Rex had followed a route to the tops that he had taken many times before. Reaching the summit, he was confronted by a strange and unfamiliar sight, and his first reaction was to assume he had somehow taken a wrong turn and emerged further north than he had thought.

On closer examination, he found he was indeed exactly where he had first assumed he was, but there in the water stood a body of land separated from

Arapawa by a narrow neck of sea. The island was fairly large and bush-clad and Rex was aware of bird life among the trees.

Not one to be easily startled and frightened, Rex had surveyed his surroundings and studied the little island for some time before deciding to retrace his steps and return for another look. This he did, only to find the island was no longer where it had been ten minutes before. Rex was able to produce a clear and concise drawing of the island and its relationship to Arapawa. Unfortunately, he did not have his camera with him to capture it on film, but I wondered if it would have shown up even if he had managed to photograph it. The disappearing island has been seen by several people who report similar stories of coming upon a land mass in a place where nothing before had been seen and the accompanying feeling that they were in a strange place."

Could it be possible that an Inter-dimensional gateway possibly exists in the vicinity? Bruce Cathie and another pilot, in 1956, both witnessed a UFO disappear in a flash of light in the area around D'urville island, but before it did so an object detached itself from it and plunged straight downward in the area of Cook Strait. A shockwave broke windows in the Nelson area.

Another UFO on the 26th March 1965 tracked down the west coast of New Zealand and was seen to disappear in the vicinity of D'urville Island, Cook Strait. People in Napier, New Plymouth, Palmerston North, Wanganui, Fielding, Otaki forks, Nelson coast road, Blenheim and Westport all reported sightings. This is what led Bruce to his clue for his first 'Trackline' he plotted which led him to discover the world Grid.

THE AMAZING DISCOVERIES OF JOHN HUTCHISON

The following research presented may be a clue with which to tie the elements of this investigation together with. Perhaps certain types of electromagnetic apparatus when placed on areas of the earth's surface with relation to the grid, may cause effects in other areas. This could be in part due to the nature of complex electromagnetic or scalar field interaction at harmonically sensitive or significant points. Consider the following...

John Hutchison, an amateur scientist from Vancouver Canada, claims to have conducted experiments utilising the interaction of complex electromagnetic fields to produce physical effects on material. Levitation, distortion and disruption of matter the creation of 'null zones' where the normal laws of physics do not apply. He has combined dissimilar materials and jellified metal objects.

John utilises a combination of static field generating equipment (i.e. Van de Graff generators), high voltage high frequency field generating devices (Tesla coils) and an assortment of RF transmitting equipment operating on frequencies from the VLF range ~150kilohertz up to through the microwave range 2000 Megahertz.

He basically switches it all on at once, determines where the fields intersect and then tunes the equipment through ranges of frequencies that he thinks will cause the effects detailed. One theory is that the powerful electromagnetic field interaction disrupts the electron orbits and causes the atomic properties to alter of the sample under scrutiny... He has also caused a phenomenon likened to an electronic fog, reported in the Bermuda triangle, which possibly could be a portal to another dimension. The experiments are notoriously hard to replicate and determine.

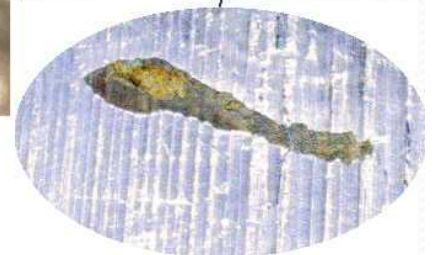
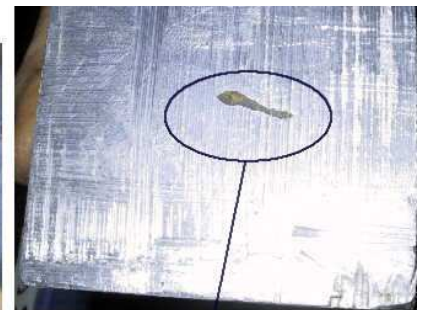
An Excerpt from his website;

The phrase "Hutchison effect" is used except about John's levitation experiments also about these weird pieces of metal. John tells that the deformations have taken place in room temperature as a result of a complex combination of electromagnetic fields.

"Getting the effects is like opening an electromagnetic combination lock. I was actually so busy with adjusting the controls that I had no time to observe how the test pieces behaved in the combination of fields." About his levitation and cold melting H-effects John likes to think their origin connected with external [dimensions](#). This explanation is fascinating. Now one may be manipulating with some Inter-dimensional wormholes within matter and it's basic particles.

Afterwards, an alternative way of explaining the cold melting appears in visitor's mind. When exposing the object to a combination of electromagnetic fields with many frequencies simultaneously one actually may be trying to hit as many of the atom's orbital or nuclear resonances as possible.

Now as the atom is busy oscillating by itself and trying to stay in one piece under the strain of excess energy, it has other things to worry about than trying to keep tight bonds with neighbouring atoms. While experimenter turns more power and hits more of it's resonances, the outer electrons responsible for metallic bonds start to shake themselves loose from other atoms and they start to slide past each other. The result is a soft, trembling jelly of metal.



Immediately the 'Philadelphia experiment' springs to mind. A USN destroyer while trailing experimental radar invisibility devices, completely disappeared from view and into the electromagnetic spectrum for a period of time. Unfortunately, it was reported the crew suffered bizarre and disturbing side effects and the project was quickly hushed up. Apparently, huge magnetic fields were generated around the vessel and then phase shifted. Possibly research into this continues under black budget operations. If you don't think this is possible consider the Pentagon 'lost' track of approximately 12 TRILLION dollars a recently. This is farcical. We have a right to know what is really going on. The Montauk allegations and project 'phoenix' were considered extensions to the primary experimentation carried out in this field. It just went 'underground'. Possibly literally.

Some of the observations I have made in this basic report are based on intuitive leads but all material contained within has been sourced and based upon research which others have initially conducted. In my opinion, The possible validation of Bruce Cathie's findings being factual are almost certain. When one takes the time for themselves to explore the principles behind his reasoning, the integrity of his research, then you will be rewarded with an insight into this marvellous universe and the humble tenacity of an individual who bothered to look a bit deeper. Every day is a beautiful mystery and we are quite removed in our day-to-day business of even beginning to impinge upon this realisation. I urge everyone reading this document to actively participate in the wonder and thrill of carrying out this particular branch of research. This introduction paper is here merely to whet the appetite.

I feel what we have started to uncover here is but the tip of the iceberg. Perhaps there is a group operating upon the face of our planet with the know-how and capability to manipulate space - time itself. Artificial windows may be created to coincide with geometric alignments that cause a shift in reality or matter transference to another realm. Quantum physics almost states this is achievable. I can't help thinking of the New Zealand movie 'The Quiet Earth' when these considerations are postulated. I pray those in the know are dedicated to furthering the goodwill of humankind and have the noblest of intentions. Again, as caretakers of this planet we have the right to know the truth of what is going on.

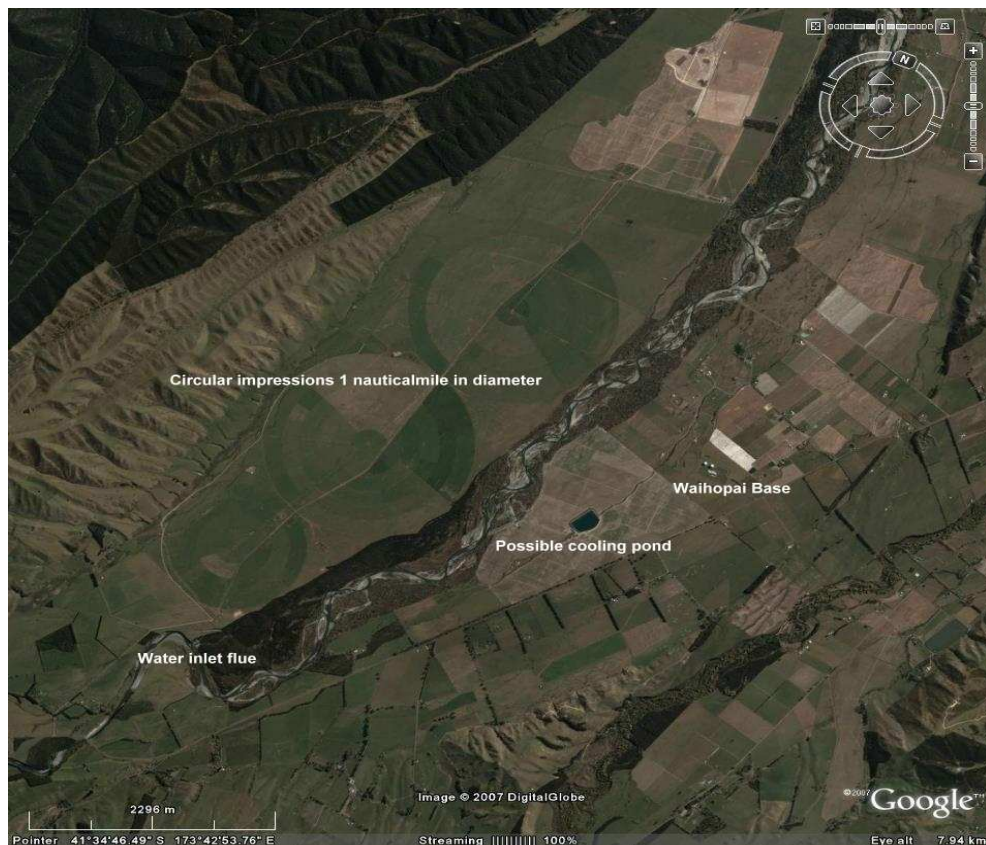
The Possibility of an underground complex near Waihopai base

With the advent of google earth I have spent many hours looking at harmonically related areas in the hope some unknown anomaly or structure may show itself. Whilst looking at the Waihopai echelon base (when it was constructed it was labelled as a 'transit circle observing station', space research). Pine gap in central Australia was also designated as a 'space research facility when it was first commissioned. I noticed a feature on the ground behind the station, which was worthy of closer scrutiny. These seemed to comprise of three circles, two with a diameter of very close to 1 nautical mile across. On a river that is not supposed to be used for irrigation purposes lies a 'flue' or inlet where it looks like water can be re directed into an area close to these circular impressions. There possibly could be a large underground complex of a technical/scientific nature located there. When looking at the circles the first thing that sprang into my mind was a particle accelerator. These devices can be utilised to generate vast amounts of energy. The type of energy that could be used in conducting large scale space/time experiments. I am quietly hoping this is completely wrong and just the product of an overactive imagination..

It is noteworthy to be aware that this complex is located directly over a grid intersection point with relation to Bruce Cathie's research. Also, in 2005, a rural mother and her daughter had an astounding UFO experience in the area early one morning. This is documented on the UFOCUS NZ website and should be of interest to all serious researchers. I re-iterate again the Bernheim/Marlborough area has long been a hotbed of UFO activity. As long ago as 1909 'airships' and cylindrical craft have been observed. Later on in the century, the world famous 'Kaikoura' sightings occurred in the vicinity. Those sightings, in 1978, were the first officially filmed UFO/UAP footage by a network camera crew in the world. There were numerous credible witnesses and a satisfactory explanation is not forthcoming to this day. The US govt has also had a strong presence in the area with hi-tech bases. In the late 60's an area of Woodbourne air force base was cordoned off and a considerable amount of high tech radio equipment was brought in by the US air force and installed there. It was considered 'off limits' to NZ personnel and little knowledge of the unit's true purpose ever reached the public. It was dismantled a few years later but Waihopai was established in the 80's. Could these bases be serving a double purpose? For those that care to investigate further, Bruce Cathie has found irrefutable evidence of the harmonic/geometric linking of such bases.



WAIHOPAI BASE



OVERVEIW OF THE VALLEY SHOWING CIRCULAR IMPRESSIONS



CLOSEUP OF THE MIDDLE CIRCLE



WATER FLUE OFF RIVER AND FIRST CIRCLE



CLOSEUP OF WATER INLET NEXT TO FIRST CIRCLE

CONCLUSION

The 'Gist' of this report details the possibility of utilising the electromagnetic spectrum to precipitate a change in the structure of matter, space and time. Of course, there may be many natural spots on the face of our planet where the geometrics of space/time can be unstable given the right conditions. The 'Ley lines' of old are exactly what this grid business is all about. The ancient art of geomancy is basically where this springs from.

There may be secret research, utilising technology, being conducted which can control or enhance these effects. Indeed, being able to produce them at will would be a major goal of those involved in such endeavours. During my research into this particular area I have been focusing on radio transmission sites and their associated wavefront collision areas at harmonically significant distances from the transmission site. In the Cook straight area it has become apparent that several major RF transmitters sited in the north and south islands have wavefronts that collide over roughly the same area. These distances from the transmitters are based on Bruce's Harmonic grid. Intersecting or colliding wavefronts above these sensitive areas may form extremely complex standing waves. This in turn, if the frequencies involved are

harmonically 'tuned' could possibly produce 4 dimensional 'cymatic' patterns. Opening doorways into the world of the micro (or macro) cosm. Some of the transmitting stations could have been placed on the ground in established broadcast/utility roles. To activate the cymatic field all that need happen would be one isolated transmitter operating on the correct frequency to be 'keyed' when the desired effect is required and the pattern forms. Of course, this transmitter would have to be located in a geometrically positioned area. To unlock the science behind the waveforms would take a tremendous amount of analysis. Fourier transforms and Lissajous analysis would have to be conducted on all the frequencies involved. Highly sophisticated test and monitoring plus processing equipment would be required to even begin to paint a picture of these complex field interactions. Modulation schemes, power factors, field strengths would all have to be looked at. Even the position of other solar bodies may have something to do with this all. This paper has but been very limited look at the phenomonen involved. I intend to continue my research and investigations into this field, and will post my observations and findings as they come to hand. I wish you all the best of luck in your endeavours and would like to thank my main inspiration behind this research.. Mr Bruce Cathie.

Kind regards,
Secondfield 2007

