
Section 19. Inter-Integrated Circuit™ (I²C™)

HIGHLIGHTS

This section of the manual contains the following major topics:

19.1	Introduction	19-2
19.2	I ² C-Bus Characteristics.....	19-4
19.3	Control and Status Registers	19-7
19.4	Enabling I ² C Operation	19-13
19.5	Communicating as a Master in a Single-Master Environment	19-15
19.6	Communicating as a Master in a Multi-Master Environment	19-28
19.7	Communicating as a Slave	19-31
19.8	Connection Considerations for I ² C-Bus	19-46
19.9	Module Operation During PWRSAV Instruction	19-47
19.10	Peripheral Module Disable (PMD) Registers	19-47
19.11	Effects of a Reset.....	19-47
19.12	Register Maps.....	19-48
19.13	Design Tips	19-49
19.14	Related Application Notes.....	19-50
19.15	Revision History	19-51

Note: This family reference manual section is meant to serve as a complement to device data sheet. Depending on the device variant, this manual section may not apply to all dsPIC33E/PIC24E devices.

Please consult the note at the beginning of the “**Inter-Integrated Circuit™ (I²C™)**” chapter in the current device data sheet to check whether this document supports the device you are using.

Device data sheets and family reference manual sections are available for download from the Microchip worldwide web site at: <http://www.microchip.com>

19.1 INTRODUCTION

The Inter-Integrated Circuit™ (I²C™) module is a serial interface useful for communicating with other peripheral or microcontroller devices. These peripheral devices may be serial EEPROMs, display drivers, A/D converters and so on.

The I²C module can operate in any of the following I²C systems:

- As a slave device
- As a master device in a single-master system (slave may also be active)
- As a master/slave device in a multi-master system (bus collision detection and arbitration available)

The I²C module consists of independent I²C master logic and I²C slave logic, each generating interrupts based on their events. In multi-master systems, the software is simply partitioned into master controller and slave controller.

When the I²C master logic is active, the slave logic also remains active, detecting the state of the bus and potentially receiving messages from itself in a single-master system or from other masters in a multi-master system. No messages are lost during multi-master bus arbitration.

In a multi-master system, bus collision conflicts with other masters in the system are detected, and the module provides a method to terminate and then restart the message.

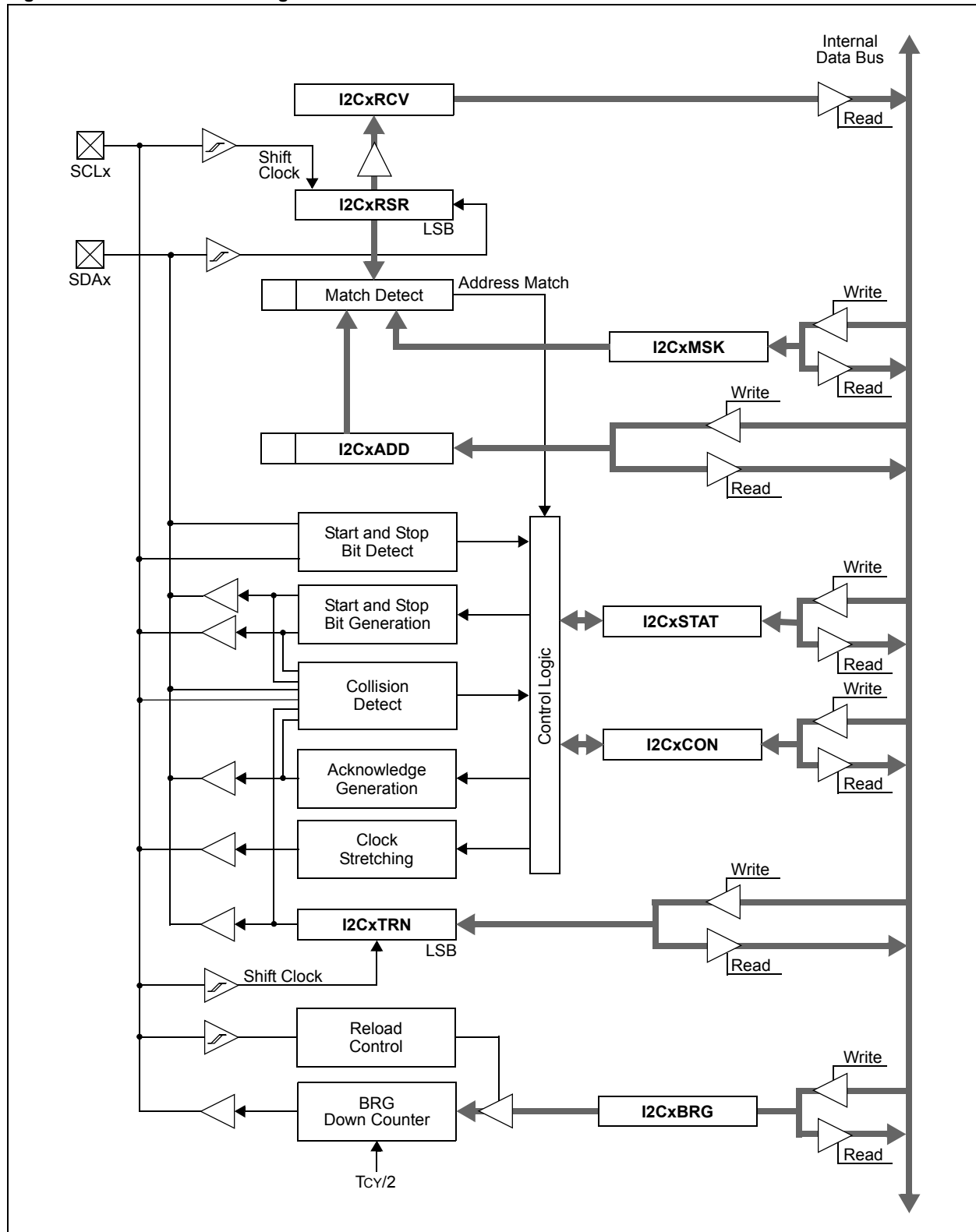
The I²C module contains a Baud Rate Generator (BRG). The I²C BRG does not consume other timer resources in the device.

The key features of the I²C module are as follows:

- Independent master and slave logic
- Multi-master support, which prevents message losses in arbitration
- Detects 7-bit and 10-bit device addresses with configurable address masking in Slave mode
- Detects general call addresses as defined in the I²C protocol
- Bus Repeater mode, allowing the module to accept all messages as a slave regardless of the address
- Automatic SCLx clock stretching provides delays for the processor to respond to a slave data request
- Supports 100 kHz and 400 kHz bus specifications
- Supports the Intelligent Platform Management Interface (IPMI) standard

Figure 19-1 illustrates the block diagram of the I²C module.

Figure 19-1: I²C™ Block Diagram



19.2 I²C-BUS CHARACTERISTICS

The I²C-bus is a two-wire serial interface. Figure 19-2 illustrates the connection between a dsPIC33E/PIC24E device and a 24LC256 I²C serial EEPROM, which is a typical example for any I²C interface.

The interface uses a comprehensive protocol to ensure reliable transmission and reception of data. When communicating, one device acts as the “master” and initiates transfer on the bus and generates the clock signals to permit that transfer, while the other device(s) acts as the “slave” responding to the transfer. The clock line, SCLx, is output from the master and input to the slave, although occasionally the slave drives the SCLx line. The data line, SDAx, may be output and input from both the master and slave.

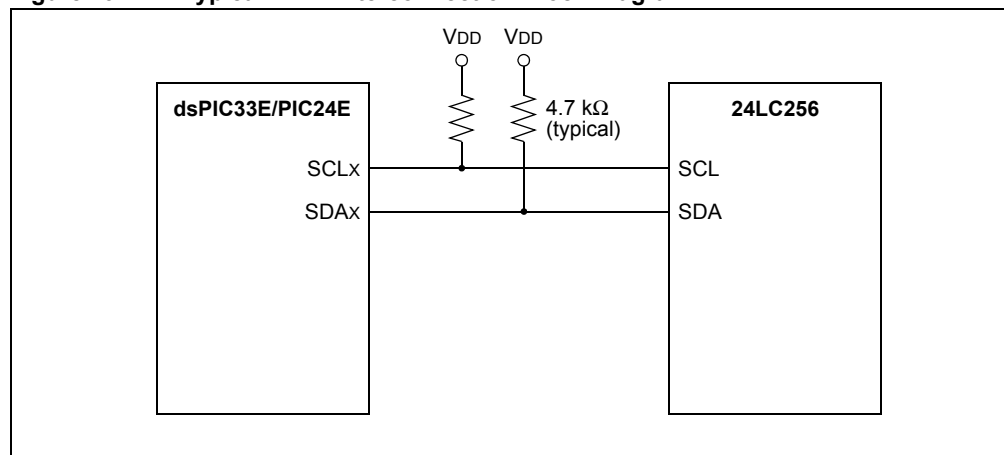
Because the SDAx and SCLx lines are bidirectional, the output stages of the devices driving the SDAx and SCLx lines must have an open drain in order to perform the wired AND function of the bus. External pull-up resistors are used to ensure a high level when no device is pulling the line down.

In the I²C interface protocol, each device has an address. When a master wishes to initiate a data transfer, it first transmits the address of the device that it wants to “talk” to. All devices “listen” to see if this is their address. Within this address, bit 0 specifies whether the master wants to read from or write to the slave device. The master and slave are always in opposite modes (transmitter/receiver) of operation during a data transfer. That is, they can be thought of as operating in either of the following two relations:

- Master-Transmitter and Slave-Receiver
- Slave-Transmitter and Master-Receiver

In both cases, the master originates the SCLx clock signal.

Figure 19-2: Typical I²C™ Interconnection Block Diagram



19.2.1 I²C-Bus Protocol

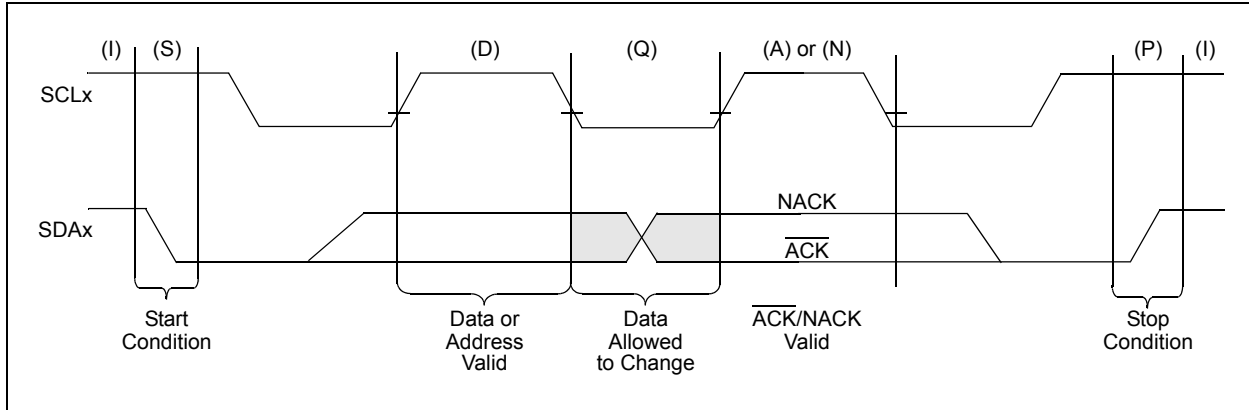
The following I²C-bus protocol has been defined:

Data transfer can be initiated only when the bus is not busy.

During data transfer, the data line must remain stable whenever the SCLx clock line is high. Changes in the data line while the SCLx clock line is high will be interpreted as a Start or Stop condition.

Accordingly, the bus conditions illustrated in Figure 19-3 have been defined.

Figure 19-3: I²C™-Bus Protocol States



19.2.1.1 START DATA TRANSFER (S)

After a bus Idle state, a high-to-low transition of the SDAx line while the clock (SCLx) is high determines a Start condition. All data transfers must be preceded by a Start condition.

19.2.1.2 STOP DATA TRANSFER (P)

A low-to-high transition of the SDAx line while the clock (SCLx) is high determines a Stop condition. All data transfers must end with a Stop condition.

19.2.1.3 REPEATED START (R)

After a Wait state, a high-to-low transition of the SDAx line while the clock (SCLx) is high determines a Repeated Start condition. Repeated starts allow a master to change bus direction or addressed slave device without relinquishing control of the bus.

19.2.1.4 DATA VALID (D)

The state of the SDAx line represents valid data when, after a Start condition, the SDAx line is stable for the duration of the high period of the clock signal. There is one bit of data per SCLx clock.

19.2.1.5 ACKNOWLEDGE (A) OR NOT ACKNOWLEDGE (N)

All data byte transmissions must be Acknowledged ($\overline{\text{ACK}}$) or Not Acknowledged (NACK) by the receiver. The receiver pulls the SDAx line low for an ACK or releases the SDAx line for a NACK. The Acknowledge is a one-bit period using one SCLx clock.

19.2.1.6 WAIT/DATA INVALID (Q)

The data on the line must be changed during the low period of the clock signal. Devices can also stretch the clock low time by asserting a low on the SCLx line, causing a wait on the bus.

19.2.1.7 BUS IDLE (I)

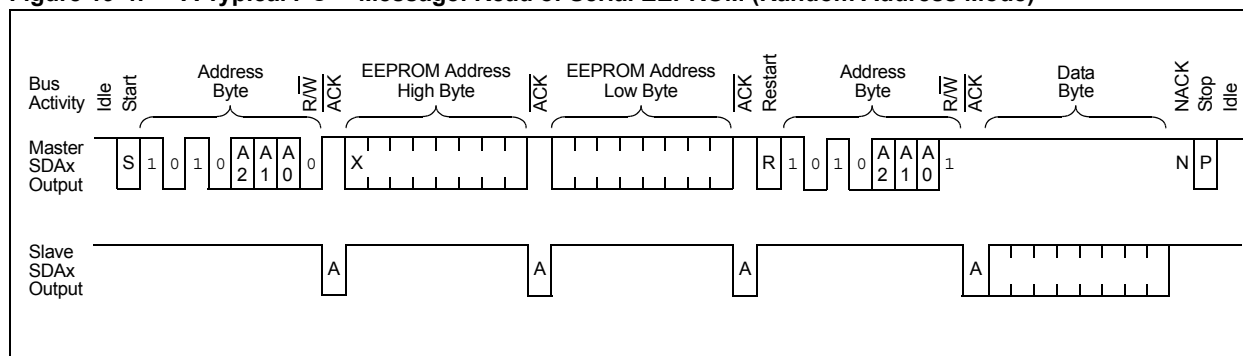
Both data and clock lines remain high at those times after a Stop condition and before a Start condition.

19.2.2 Message Protocol

A typical I²C message is illustrated in Figure 19-4. In this example, the message reads a specified byte from a 24LC256 I²C serial EEPROM. The dsPIC33E/PIC24E device acts as the master and the 24LC256 device acts as the slave.

Figure 19-4 indicates the data as driven by the master device and by the slave device, taking into account that the combined SDAx line is a wired AND of the master and slave data. The master device controls and sequences the protocol. The slave device only drives the bus at specifically determined times.

Figure 19-4: A Typical I²C™ Message: Read of Serial EEPROM (Random Address Mode)



19.2.2.1 START MESSAGE

Each message is initiated with a Start condition and terminated with a Stop condition. The number of data bytes transferred between the Start and Stop conditions is determined by the master device. As defined by the system protocol, the bytes of the message may have special meaning, such as device address byte or data byte.

19.2.2.2 ADDRESS SLAVE

In Figure 19-4, the first byte is the device address byte, which must be the first part of any I²C message. It contains a device address and a R/W status bit. Refer to **Appendix A: "I²C™ Overview"** in **Section 37. "Appendix"** (DS70074) of the *"dsPIC30F Family Reference Manual"* for additional information on address byte formats. Note that R/W = 0 for this first address byte, indicates that the master will be a transmitter and the slave will be a receiver.

19.2.2.3 SLAVE ACKNOWLEDGE

The receiving device is obliged to generate an Acknowledge signal, $\overline{\text{ACK}}$, after the reception of each byte. The master device must generate an extra SCLx clock, which is associated with this Acknowledge bit.

19.2.2.4 MASTER TRANSMIT

The next two bytes, sent by the master to the slave, are data bytes containing the address of the requested EEPROM data byte. The slave must Acknowledge after receiving each of the data bytes.

19.2.2.5 REPEATED START

At this point, the slave EEPROM has the address information necessary to return the requested data byte to the master. However, the R/W status bit from the first device address byte specifies master transmission and slave reception. The bus must be turned in the other direction for the slave to send data to the master.

To perform this function without ending the message, the master sends a Repeated Start. The Repeated Start is followed with a device address byte containing the same device address as before and with the R/W = 1 to indicate slave transmission and master reception.

19.2.2.6 SLAVE REPLY

Now the slave transmits the data byte by driving the SDAx line, while the master continues to originate clocks but releases its SDAx drive.

19.2.2.7 MASTER ACKNOWLEDGE

During reads, a master must terminate data requests to the slave by Not Acknowledging (generating a 'NACK') on the last byte of the message.

19.2.2.8 STOP MESSAGE

The master sends a Stop to terminate the message and return the bus to an Idle state.

19.3 CONTROL AND STATUS REGISTERS

The I²C module has seven registers for operation that are accessible by the user application. All registers are accessible in either Byte or Word mode. The seven registers are as follows:

- **I2CxCON: I2Cx Control Register**

This register allows the control of the module's operation.

- **I2CxSTAT: I2Cx Status Register**

This register contains the status flags indicating the module's state during operation.

- **I2CxMSK: I2Cx Slave Mode Address Mask Register**

This register designates which bit positions in the I2CxADD register can be ignored, which allows for multiple address support.

- **I2CxRCV: Receive Buffer Register**

This is the buffer register from which data bytes can be read. The I2CxRCV register is a read-only register.

- **I2CxTRN: Transmit Register**

This is the transmit register. Bytes are written to this register during a transmit operation. The I2CxTRN register is a read/write register.

- **I2CxADD: Address Register**

This register holds the slave device address.

- **I2CxBRG: Baud Rate Generator Reload Register**

This register holds the Baud Rate Generator reload value for the I²C module Baud Rate Generator.

The transmit data is written to the I2CxTRN register. This register is used when the module operates as a master transmitting data to the slave or when it operates as a slave sending reply data to the master. As the message progresses, the I2CxTRN register shifts out the individual bits. As a result, the I2CxTRN register cannot be written to unless the bus is Idle. The I2CxTRN register can be reloaded while the current data is transmitting.

Data being received by either the master or the slave is shifted into a non-accessible shift register, I2CxRSR. When a complete byte is received, the byte is transferred to the I2CxRCV register. In receive operations, the I2CxRSR and I2CxRCV registers create a double-buffered receiver. This allows reception of the next byte to begin before reading the current byte of received data.

If the module receives another complete byte before the software reads the previous byte from the I2CxRCV register, a receiver overflow occurs and sets the I2COV bit (I2CxSTAT<6>). The byte in the I2CxRSR register is lost. Further reception and clock stretching are disabled until the module sees a Start/Repeated, Start/Stop condition on the bus. If the I2COV flag has been cleared, reception can proceed normally. If the I2COV flag is not cleared, the module receives the next byte correctly, but sends a NACK. It will then be unable to receive further bytes or stretch the clock until it detects a Start/Repeated, Start/Stop condition.

The I2CxADD register holds the slave device address. In 10-bit Addressing mode, all bits are relevant. In 7-bit Addressing mode, only the I2CxADD<6:0> bits are relevant. Note that the I2CxADD<6:0> bits correspond to the upper seven bits in the address byte; the Read/Write bit is not included in the value in this register. The A10M bit (I2CxCON<10>) specifies the expected mode of the slave address. By using the I2CxMSK register with the I2CxADD register in either Slave Addressing mode, one or more bit positions can be removed from exact address matching, allowing the module in Slave mode to respond to multiple addresses.

dsPIC33E/PIC24E Family Reference Manual

Register 19-1: I2CxCON: I2Cx Control Register

R/W-0	U-0	R/W-0	R/W-1, HC	R/W-0	R/W-0	R/W-0	R/W-0
I2CEN	—	I2CSIDL	SCLREL	IPMIEN ^(1,2,3)	A10M	DISSLW	SMEN
bit 15							bit 8

R/W-0	R/W-0	R/W-0	R/W-0, HC	R/W-0, HC	R/W-0, HC	R/W-0, HC	R/W-0, HC
GCEN	STREN	ACKDT	ACKEN	RCEN	PEN	RSEN	SEN
bit 7							bit 0

Legend:				U = Unimplemented bit, read as '0'			
R = Readable bit		W = Writable bit		HS = Set in Hardware		HC = Cleared in Hardware	
-n = Value at Reset		'1' = Bit is set		'0' = Bit is cleared		x = Bit is unknown	

- bit 15 **I2CEN:** I2Cx Enable bit
1 = Enables the I2Cx module and configures the SDAx and SCLx pins as serial port pins
0 = Disables the I2Cx module; all I²C pins are controlled by port functions
- bit 14 **Unimplemented:** Read as '0'
- bit 13 **I2CSIDL:** Stop in Idle Mode bit
1 = Discontinue module operation when device enters Idle mode
0 = Continue module operation in Idle mode
- bit 12 **SCLREL:** SCLx Release Control bit (when operating as I²C slave)
1 = Release SCLx clock
0 = Hold SCLx clock low (clock stretch)
If STREN = 1:
Bit is R/W (i.e., software may write '0' to initiate stretch and write '1' to release clock). Hardware clear at beginning of slave transmission and at end of slave reception.
If STREN = 0:
Bit is R/S (i.e., software may only write '1' to release clock). Hardware clear at beginning of slave transmission.
- bit 11 **IPMIEN:** Intelligent Platform Management Interface (IPMI) Enable bit^(1,2,3)
1 = IPMI Support mode is enabled; all addresses Acknowledged
0 = IPMI Support mode disabled
- bit 10 **A10M:** 10-Bit Slave Address bit
1 = I2CxADD register is a 10-bit slave address
0 = I2CxADD register is a 7-bit slave address
- bit 9 **DISSLW:** Disable Slew Rate Control bit
1 = Slew rate control disabled
0 = Slew rate control enabled
- bit 8 **SMEN:** SMBus Input Levels bit
1 = Enable I/O pin thresholds compliant with SMBus specification
0 = Disable SMBus input thresholds

Note 1: When performing master operations, ensure that the IPMIEN bit is clear.

2: The IPMI mode does not support 10-bit addressing.

3: If IPMI Addressing mode is active, the slave, upon receiving an Address byte from the master, should inspect the R/W bit and ignore the message if the R/W bit value is '1'. Typically, this action is not required in IPMI mode, as the Address byte sent by the master should have the R/W bit value as '0'.

Register 19-1: I2CxCON: I2Cx Control Register (Continued)

bit 7	GCEN: General Call Enable bit (when operating as I ² C slave) 1 = Enable interrupt when a general call address is received in the I2CxRSR register (module is enabled for reception) 0 = General call address disabled
bit 6	STREN: SCLx Clock Stretch Enable bit (I ² C Slave mode only; used in conjunction with SCLREL bit) 1 = Enable software or receive clock stretching 0 = Disable software or receive clock stretching
bit 5	ACKDT: Acknowledge Data bit (I ² C Master mode; receive operation only) Value that will be transmitted when the software initiates an Acknowledge sequence 1 = Send <u>NACK</u> during Acknowledge 0 = Send <u>ACK</u> during Acknowledge
bit 4	ACKEN: Acknowledge Sequence Enable bit (I ² C Master mode receive operation) 1 = Initiate Acknowledge sequence on SDAx and SCLx pins and transmit ACKDT data bit (hardware clear at end of master Acknowledge sequence) 0 = Acknowledge sequence not in progress
bit 3	RCEN: Receive Enable bit (I ² C Master mode) 1 = Enables Receive mode for I ² C (hardware clear at end of eighth bit of master receive data byte) 0 = Receive sequence not in progress
bit 2	PEN: Stop Condition Enable bit (I ² C Master mode) 1 = Initiate Stop condition on SDAx and SCLx pins (hardware clear at end of master Stop sequence) 0 = Stop condition not in progress
bit 1	RSEN: Repeated Start Condition Enable bit (I ² C Master mode) 1 = Initiate Repeated Start condition on SDAx and SCLx pins (hardware clear at end of master Repeated Start sequence) 0 = Repeated Start condition not in progress
bit 0	SEN: Start Condition Enable bit (I ² C Master mode) 1 = Initiate Start condition on SDAx and SCLx pins (hardware clear at end of master Start sequence) 0 = Start condition not in progress

Note 1: When performing master operations, ensure that the IPMIEN bit is clear.

2: The IPMI mode does not support 10-bit addressing.

3: If IPMI Addressing mode is active, the slave, upon receiving an Address byte from the master, should inspect the $\overline{R/W}$ bit and ignore the message if the $\overline{R/W}$ bit value is '1'. Typically, this action is not required in IPMI mode, as the Address byte sent by the master should have the $\overline{R/W}$ bit value as '0'.

dsPIC33E/PIC24E Family Reference Manual

Register 19-2: I2CxSTAT: I2Cx Status Register

R-0, HSC	R-0, HSC	U-0	U-0	U-0	R/C-0, HS	R-0, HSC	R-0, HSC
ACKSTAT	TRSTAT	—	—	—	BCL	GCSTAT	ADD10
bit 15						bit 8	

R/C-0, HS	R/C-0, HS	R-0, HSC	R-0, HSC	R-0, HSC	R-0, HSC	R-0, HSC	R-0, HSC
IWCOL	I2COV	D/A	P	S	R/W	RBF	TBF
bit 7						bit 0	

Legend:				U = Unimplemented bit, read as '0'
R = Readable bit	C = Clearable bit	HS = Set in Hardware	HSC = Hardware Set/Cleared	
-n = Value at Reset	'1' = Bit is set	'0' = Bit is clear	x = Bit is unknown	

bit 15	ACKSTAT: Acknowledge Status bit 1 = <u>N</u> ACK received from slave 0 = ACK received from slave Hardware set or clear at end of Slave or Master Acknowledge.
bit 14	TRSTAT: Transmit Status bit (I ² C Master mode transmit operation) 1 = Master transmit is in progress (8 bits + ACK) 0 = Master transmit is not in progress Hardware set at beginning of master transmission; hardware clear at end of slave Acknowledge.
bit 13-11	Unimplemented: Read as '0'
bit 10	BCL: Master Bus Collision Detect bit 1 = A bus collision has been detected during a master operation 0 = No collision Hardware set at detection of bus collision.
bit 9	GCSTAT: General Call Status bit 1 = General call address was received 0 = General call address was not received Hardware set when address matches general call address; hardware clear at Stop detection.
bit 8	ADD10: 10-bit Address Status bit 1 = 10-bit address was matched 0 = 10-bit address was not matched Hardware set at match of 2nd byte of matched 10-bit address; hardware clear at Stop detection.
bit 7	IWCOL: Write Collision Detect bit 1 = An attempt to write the I2CxTRN register failed because the I ² C module is busy 0 = No collision Hardware set at occurrence of write to I2CxTRN register while busy (cleared by software).
bit 6	I2COV: Receive Overflow Flag bit 1 = A byte was received while the I2CxRCV register is still holding the previous byte 0 = No overflow Hardware set at attempt to transfer I2CxRSR register to I2CxRCV register (cleared by software).
bit 5	D/A: Data/Address bit (I ² C Slave mode) 1 = Indicates that the last byte received was data 0 = Indicates that the last byte received was a device address Hardware clear at device address match; hardware set by reception of slave byte or is set after the transmission is complete and the TBF flag is cleared.
bit 4	P: Stop bit 1 = Indicates that a Stop bit has been detected last 0 = Stop bit was not detected last Hardware set or clear when Start, Repeated Start or Stop detected.

Register 19-2: I2CxSTAT: I2Cx Status Register (Continued)

bit 3	S: Start bit 1 = Indicates that a Start (or Repeated Start) bit has been detected last 0 = Start bit was not detected last Hardware set or clear when Start, Repeated Start or Stop detected.
bit 2	R/W: Read/Write Information bit (when operating as I ² C slave) 1 = Read: data transfer is output from slave 0 = Write: data transfer is input to slave Hardware set or clear after reception of I ² C device address byte.
bit 1	RBF: Receive Buffer Full Status bit 1 = Receive complete; I2CxRCV register is full 0 = Receive not complete; I2CxRCV register is empty Hardware set when the I2CxRCV register is written with received byte; hardware clear when software reads the I2CxRCV register.
bit 0	TBF: Transmit Buffer Full Status bit 1 = Transmit in progress; I2CxTRN register is full 0 = Transmit complete; I2CxTRN register is empty Hardware set when software writes to I2CxTRN register; hardware clear at completion of data transmission.

dsPIC33E/PIC24E Family Reference Manual

Register 19-3: I2CxMSK: I2Cx Slave Mode Address Mask Register

U-0	U-0	U-0	U-0	U-0	U-0	R/W-0	R/W-0
—	—	—	—	—	—	AMSK<9:8>	
bit 15						bit 8	

R/W-0	R/W-0	R/W-0	R/W-0	R/W-0	R/W-0	R/W-0	R/W-0
AMSK<7:0>							
bit 7							bit 0

Legend:

R = Readable bit

W = Writable bit

U = Unimplemented bit, read as '0'

-n = Value at Reset

'1' = Bit is set

'0' = Bit is cleared

x = Bit is unknown

bit 15-10 **Unimplemented:** Read as '0'

bit 9-0 **AMSKx:** Mask for Address Bit x Select bit

For 10-bit Address:

1 = Enable masking for bit Ax of incoming message address; bit match not required in this position

0 = Disable masking for bit Ax; bit match required in this position

For 7-bit Address (I2CxMSK<6:0> only):

1 = Enable masking for bit Ax + 1 of incoming message address; bit match not required in this position

0 = Disable masking for bit Ax + 1; bit match required in this position

19.4 ENABLING I²C OPERATION

The I²C module is enabled by setting the I2CEN bit (I2CxCON<15>).

The I²C module fully implements all master and slave functions. When the module is enabled, the master and slave functions are active simultaneously, and respond according to the software or bus events.

When initially enabled, the module releases the SDAx and SCLx pins, putting the bus into an idle state. The master functions remain in an idle state unless software sets the SEN control bit, and data is loaded into the I2CxTRN register. These two actions initiate a master event.

When the master logic is active, the slave logic also remains active. Therefore, the slave functions will begin to monitor the bus. If the slave logic detects a Start event and a valid address on the bus, the slave logic will begin a slave transaction.

19.4.1 Enabling I²C I/O

Two pins are used for bus operation, the SCLx (clock) and the SDAx (data). When the module is enabled, assuming no other module with higher priority has control, the module assumes control of the SDAx and SCLx pins. The module software need not be concerned with the state of the port I/O of the pins, as the module overrides the port state and direction. At initialization, the pins are tri-stated (released).

19.4.2 I²C Interrupts

The I²C module generates two interrupts. One interrupt, MI2CxIF, is assigned to master events; the other interrupt, SI2CxIF, is assigned to slave events. These interrupts set a corresponding interrupt flag bit and interrupt the software process, if the corresponding interrupt enable bit is set and the corresponding interrupt priority is high enough.

The MI2CxIF interrupt is generated on completion of the following master message events:

- Start condition
- Stop condition
- Data transfer byte transmitted/received
- Acknowledge transmit
- Repeated Start
- Detection of a bus collision event

The SI2CxIF interrupt is generated on detection of a message directed to the slave, including the following events:

- Detection of a valid device address (including general call)
- Request to transmit data ($\overline{\text{ACK}}$) or to stop data transmission (NACK)
- Reception of data

19.4.3 Setting Baud Rate When Operating as a Bus Master

When operating as an I²C master, the I²C module must generate the system SCLx clock. Generally, I²C system clocks are specified to be either 100 kHz, 400 kHz or 1 MHz. The system clock rate is specified as the minimum SCLx low time plus the minimum SCLx high time. In most cases, it is defined by two TBRG intervals.

The reload value for the BRG is specified by the I2CxBRG register, as illustrated in Figure 19-5. When the BRG is loaded with this value, the generator counts down to 0 and stops until another reload has taken place. The generator count is decremented twice per instruction cycle (Tcy). The BRG is reloaded automatically on baud rate restart. For example, if clock synchronization is taking place, the BRG will be reloaded when the SCLx pin is sampled high.

Note: I2CxBRG register values that are less than two are not supported.

To calculate the BRG reload value, use the following equation:

Equation 19-1: BRG Reload Value Calculation

$$F_{SCL} = \frac{1}{((1/(F_{CY})) \times (BRG_Value + 1)) + Pulse_Gobbler_Delay}$$

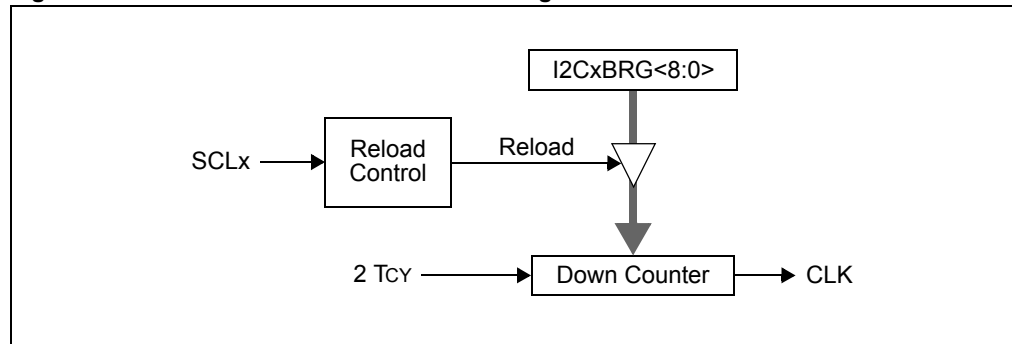
Note: See specific device data sheet for value of *Pulse_Gobbler_Delay*.

Table 19-1: I²C™ Clock Rates

Required System F _{SCL}	F _{CY}	I2C _{BRG} Decimal	I2C _{BRG} Hexadecimal	Actual F _{SCL}
100 kHz	40 MHz	395	0x18B	100 kHz
100 kHz	20 MHz	197	0x0C5	100 kHz
100 kHz	10 MHz	98	0x0b2	100 kHz
400 kHz	20 MHz	47	0x02F	400 kHz
400 kHz	10 MHz	23	0x017	400 kHz
400 kHz	5 MHz	11	0x00B	400 kHz
1 MHz	10 MHz	8	0x008	1 MHz

Note: Equation 19-1 and Table 19-1 are only guidelines. Due to system-dependant parameters, the actual baud rate may differ slightly. Testing is needed to confirm that the actual baud rate meets the system requirements. Otherwise, the value of I2CxBRG may need to be adjusted.

Figure 19-5: Baud Rate Generator Block Diagram



19.5 COMMUNICATING AS A MASTER IN A SINGLE-MASTER ENVIRONMENT

Typical operation in a system is using the I²C module to communicate with an I²C peripheral, such as an I²C serial memory. In an I²C system, the master controls the sequence of all data communication on the bus. In this example, the dsPIC33E/PIC24E and its I²C module have the role of the single-master in the system. As the single-master, it is responsible for generating the SCLx clock and controlling the message protocol.

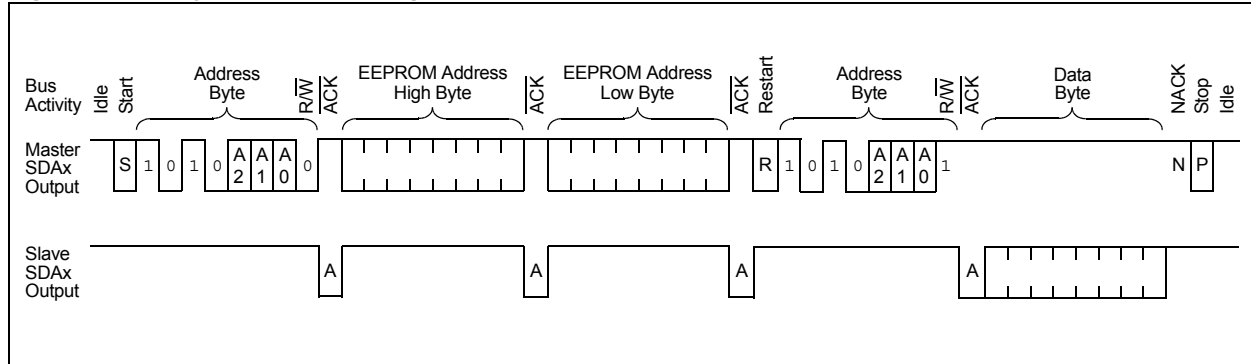
The I²C module controls the individual portions of the I²C message protocol; however, sequencing the protocol components to construct a complete message is a software task.

For example, a typical operation in a single-master environment may be to read a byte from an I²C serial EEPROM. This example message is depicted in Figure 19-6.

To accomplish this message, the software sequences through the following steps:

1. Assert a Start condition on SDAx and SCLx.
2. Send the I²C device address byte to the slave with a write indication.
3. Wait for and verify an Acknowledge from the slave.
4. Send the serial memory address high byte to the slave.
5. Wait for and verify an Acknowledge from the slave.
6. Send the serial memory address low byte to the slave.
7. Wait for and verify an Acknowledge from the slave.
8. Assert a Repeated Start condition on SDAx and SCLx.
9. Send the device address byte to the slave with a read indication.
10. Wait for and verify an Acknowledge from the slave.
11. Enable master reception to receive serial memory data.
12. Generate an $\overline{\text{ACK}}$ (or NACK) condition at the end of a received byte of data.
13. Generate a Stop condition on SDAx and SCLx.

Figure 19-6: Typical I²C™ Message: Read of Serial EEPROM (Random Address Mode)



The I²C module supports Master mode communication with the inclusion of Start and Stop generators, data byte transmission, data byte reception, Acknowledge generator and a BRG. Generally, the software writes to a control register to start a particular step, and then wait for an interrupt or poll status to wait for completion.

Subsequent sections detail each of these operations.

Note: The I²C module does not allow queuing of events. For instance, the software is not allowed to initiate a Start condition and immediately write the I2CxTRN register to initiate transmission before the Start condition is complete. In this case, the I2CxTRN register will not be written to and the IWCOL status bit will be set, indicating that this write to the I2CxTRN register did not occur.

19.5.1 Generating Start Bus Event

To initiate a Start event, the software sets the Start Enable bit, SEN (I2CxCON<0>). Prior to setting the Start bit, the software can check the P status bit (I2CxSTAT<4>) to ensure that the bus is in an idle state.

Figure 19-7 illustrates the timing of the Start condition.

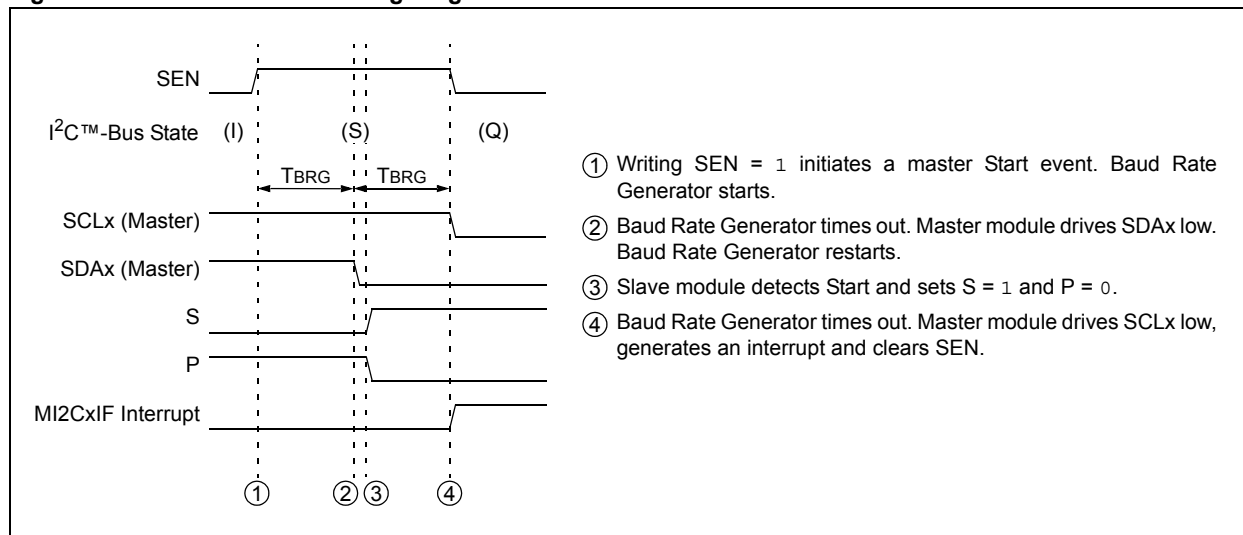
- Slave logic detects the Start condition, sets the S status bit (I2CxSTAT<3>) and clears the P status bit (I2CxSTAT<4>).
- SEN bit (I2CxCON<0>) is automatically cleared at completion of the Start condition.
- An MI2CxIF interrupt is generated at completion of the Start condition.
- After the Start condition, the SDAx line and SCLx line are left low (Q state).

19.5.1.1 IWCOL STATUS FLAG

If the software writes to the I2CxTRN register when a Start sequence is in progress, the IWCOL status bit (I2CxSTAT<7>) is set and the contents of the transmit buffer are unchanged (the write does not occur).

Note: Because queueing of events is not allowed, writing to the lower 5 bits of the I2CxCON register is disabled until the Start condition is complete.

Figure 19-7: Master Start Timing Diagram



19.5.2 Sending Data to a Slave Device

Transmission of a data byte, a 7-bit device address byte or the second byte of a 10-bit address, is accomplished by simply writing the appropriate value to the I2CxTRN register. Loading this register starts the following process:

- The software loads the I2CxTRN register with the data byte to transmit.
- Writing the I2CxTRN register sets the buffer full flag bit, TBF (I2CxSTAT<0>).
- The data byte is shifted out through the SDAx pin until all 8 bits are transmitted. Each bit of address/data is shifted out onto the SDAx pin after the falling edge of SCLx.
- On the ninth SCLx clock, the module shifts in the \overline{ACK} bit from the slave device and writes its value into the ACKSTAT status bit (I2CxSTAT<15>).
- The module generates the MI2CxIF interrupt at the end of the ninth SCLx clock cycle.

The module does not generate or validate the data bytes. The contents and usage of the bytes are dependent on the state of the message protocol maintained by the software.

19.5.2.1 SENDING A 7-BIT ADDRESS TO THE SLAVE

Sending a 7-bit device address involves sending one byte to the slave. A 7-bit address byte must contain the 7 bits of the I²C device address and a R/W status bit that defines whether the message will be a write to the slave (master transmission and slave reception) or a read from the slave (slave transmission and master reception).

Note: In 7-bit addressing mode, each node using the I²C protocol should be configured with a unique address that is stored in the I2CxADD register.

19.5.2.2 SENDING A 10-BIT ADDRESS TO THE SLAVE

Sending a 10-bit device address involves sending two bytes to the slave. The first byte contains 5 bits of the I²C device address reserved for 10-bit Addressing modes and 2 bits of the 10-bit address. Because the next byte, which contains the remaining 8 bits of the 10-bit address, must be received by the slave, the R/W status bit in the first byte must be '0', indicating master transmission and slave reception. If the message data is also directed towards the slave, the master can continue sending the data. However, if the master expects a reply from the slave, a Repeated Start sequence with the R/W status bit at '1' changes the R/W state of the message to a read of the slave.

Note: In 10-bit addressing mode, each node using the I²C protocol should be configured with a unique address that is stored in the I2CxADD register.

19.5.2.3 RECEIVING ACKNOWLEDGE FROM THE SLAVE

On the falling edge of the eighth SCLx clock, the TBF status bit is cleared and the master deasserts the SDAx pin, allowing the slave to respond with an Acknowledge. The master then generates a ninth SCLx clock.

This allows the slave device being addressed to respond with an $\overline{\text{ACK}}$ bit during the ninth bit time, if an address match occurs or data was received properly. The slave sends an Acknowledge when it has recognized its device address (including a general call) or when it has properly received its data.

The status of $\overline{\text{ACK}}$ is written into the Acknowledge Status bit, ACKSTAT (I2CxSTAT<15>), on the falling edge of the ninth SCLx clock. After the ninth SCLx clock, the module generates the MI2CxIF interrupt and enters an Idle state until the next data byte is loaded into the I2CxTRN register.

19.5.2.4 ACKSTAT STATUS FLAG

The ACKSTAT status bit (I2CxSTAT<15>) is cleared when the slave has sent an Acknowledge ($\overline{\text{ACK}} = 0$) and is set when the slave does not Acknowledge ($\overline{\text{ACK}} = 1$).

19.5.2.5 TBF STATUS FLAG

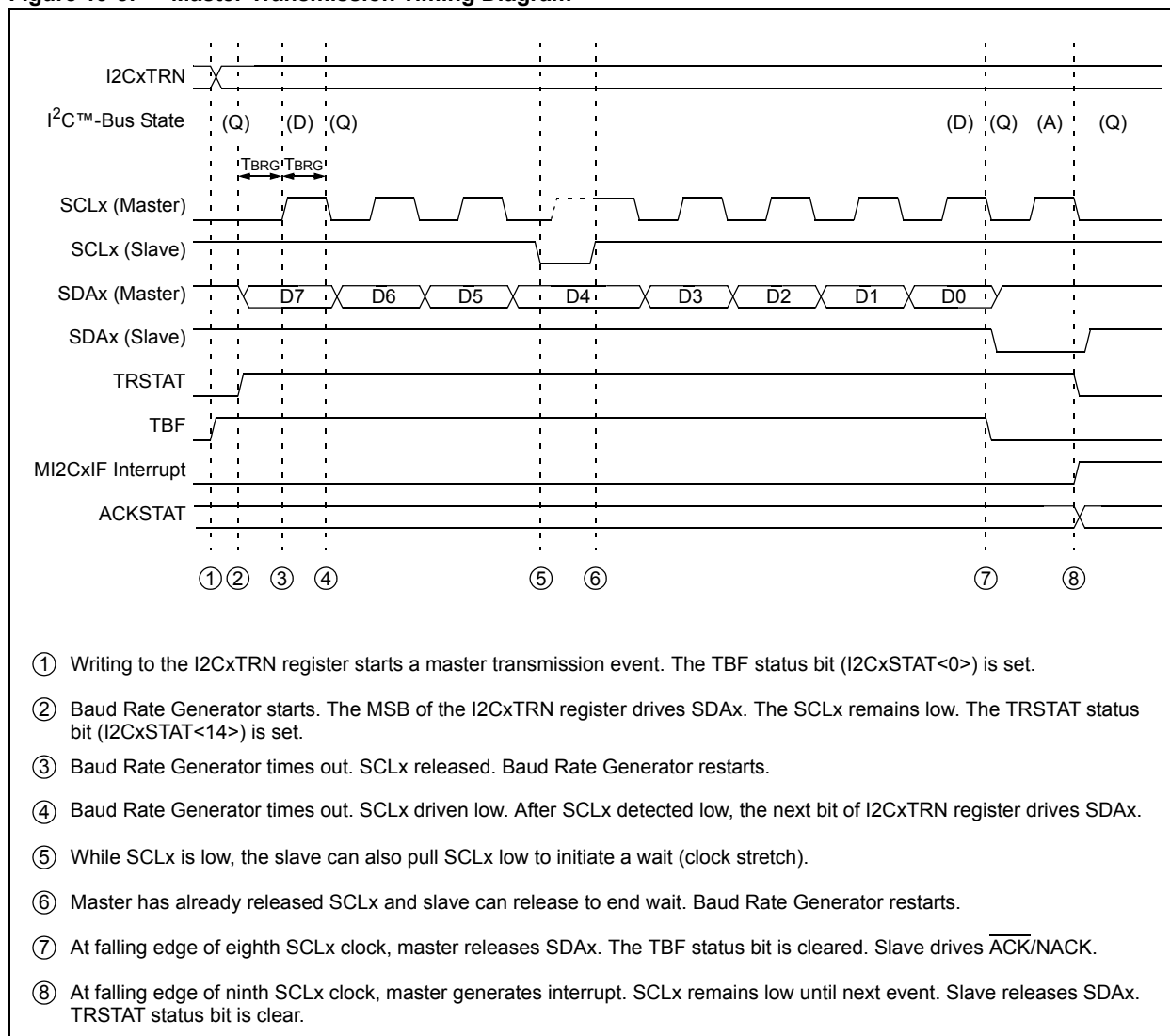
When transmitting, the TBF status bit (I2CxSTAT<0>) is set when the CPU writes to the I2CxTRN register and is cleared when all 8 bits are shifted out.

19.5.2.6 IWCOL STATUS FLAG

If the software attempts to write to the I2CxTRN register when a transmit is already in progress (i.e., the module is still shifting out a data byte), the IWCOL status bit (I2CxSTAT<7>) is set, and the contents of the buffer are unchanged (the write does not occur). The IWCOL status bit must be cleared in software.

Note: Because queueing of events is not allowed, writing to the lower 5 bits of the I2CxCON register is disabled until the transmit condition is complete.

Figure 19-8: Master Transmission Timing Diagram



19.5.3 Receiving Data from a Slave Device

The data from a slave device is received by the master after it has transmitted the slave address with an R/W status bit value of '1'. This is enabled by setting the Receive Enable bit, RCEN (I2CxCON<3>). The master logic begins to generate clocks, and before each falling edge of the SCLx, the SDAx line is sampled and data is shifted into the I2CxRSR register.

Note: The lower 5 bits of the I2CxCON register must be '0' before attempting to set the RCEN bit. This ensures the master logic is inactive.

After the falling edge of the eighth SCLx clock, the following events occur:

- The RCEN bit is automatically cleared.
- The contents of the I2CxRSR register transfer into the I2CxRCV register.
- The RBF status bit is set.
- The module generates the MI2CxIF interrupt.

When the CPU reads the buffer, the RBF status bit is automatically cleared. The software can process the data, and then execute an Acknowledge sequence.

19.5.3.1 RBF STATUS FLAG

When receiving data, the RBF status bit (I2CxSTAT<1>) is set when a device address or data byte is loaded into the I2CxRCV register from the I2CxRSR register. It is cleared when software reads the I2CxRCV register.

19.5.3.2 I2COV STATUS FLAG

If another byte is received in the I2CxRSR register while the RBF status bit (I2CxSTAT<1>) remains set and the previous byte remains in the I2CxRCV register, the I2COV status bit (I2CxSTAT<6>) is set and the data in the I2CxRSR register is lost.

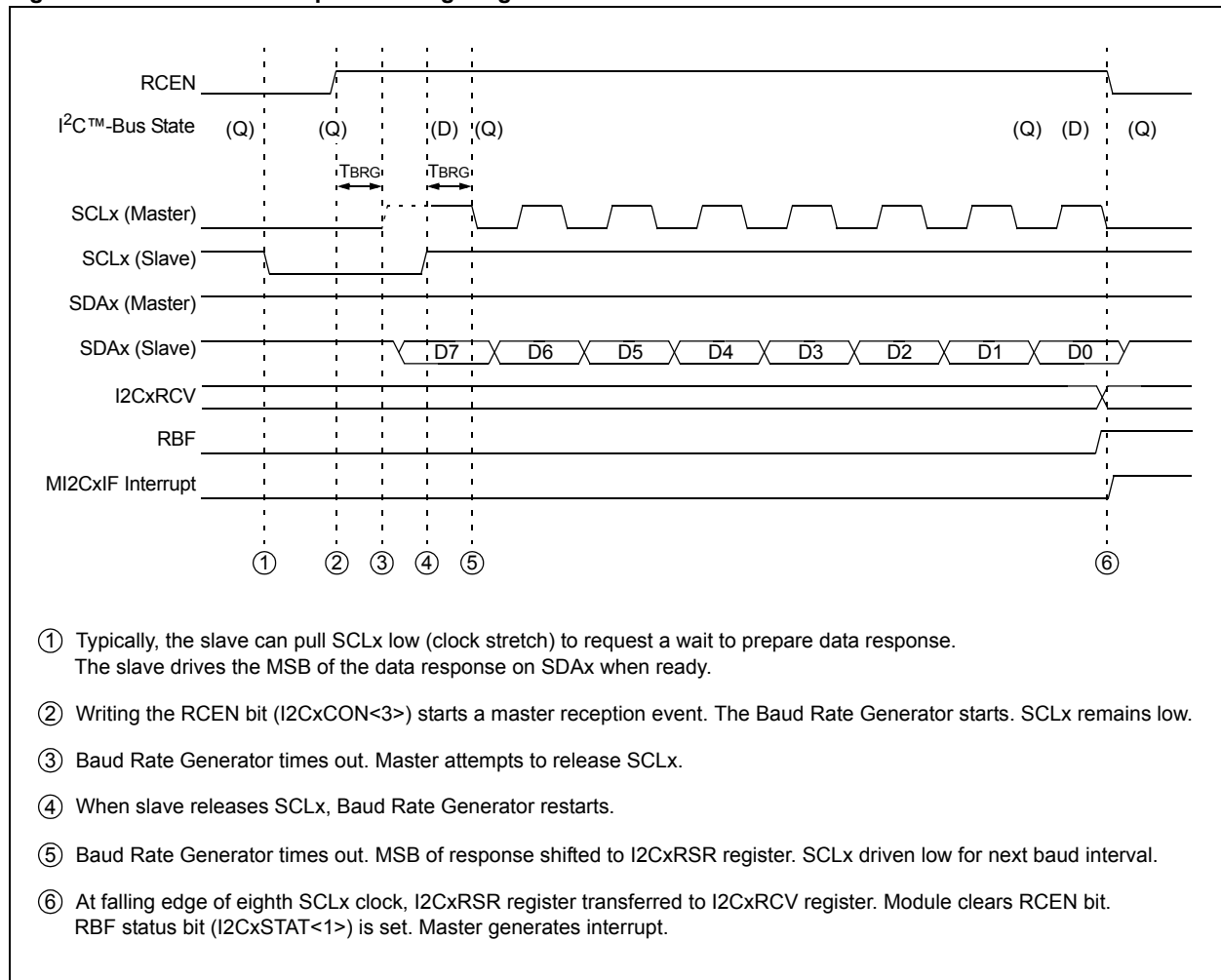
Leaving the I2COV status bit set does not inhibit further reception. If the RBF status bit is cleared by reading the I2CxRCV register and the I2CxRSR register receives another byte, that byte will be transferred to the I2CxRCV register.

19.5.3.3 IWCOL STATUS FLAG

If the software writes the I2CxTRN register when a receive is already in progress (i.e., the I2CxRSR register is still shifting in a data byte), the IWCOL status bit is set and the contents of the buffer are unchanged (the write does not occur).

Note: Since queueing of events is not allowed, writing to the lower 5 bits of the I2CxCON register is disabled until the data reception condition is complete.

Figure 19-9: Master Reception Timing Diagram



19.5.4 Acknowledge Generation

Setting the Acknowledge Enable bit, ACKEN (I2CxCON<4>), enables generation of a master Acknowledge sequence.

Note: The lower 5 bits of the I2CxCON register must be '0' (master logic inactive) before attempting to set the ACKEN bit.

Figure 19-10 illustrates an $\overline{\text{ACK}}$ sequence and Figure 19-11 illustrates a NACK sequence. The Acknowledge Data bit, ACKDT (I2CxCON<5>), specifies $\overline{\text{ACK}}$ or NACK.

After two baud periods, the ACKEN bit is automatically cleared and the module generates the MI2CxIF interrupt.

19.5.4.1 IWCOL STATUS FLAG

If the software writes to the I2CxTRN register when an Acknowledge sequence is in progress, the IWCOL status bit (I2CxSTAT<7>) is set, and the contents of the buffer are unchanged (the write does not occur).

Note: Because queueing of events is not allowed, writing to the lower 5 bits of the I2CxCON register is disabled until the Acknowledge condition is complete.

Figure 19-10: Master Acknowledge ($\overline{\text{ACK}}$) Timing Diagram

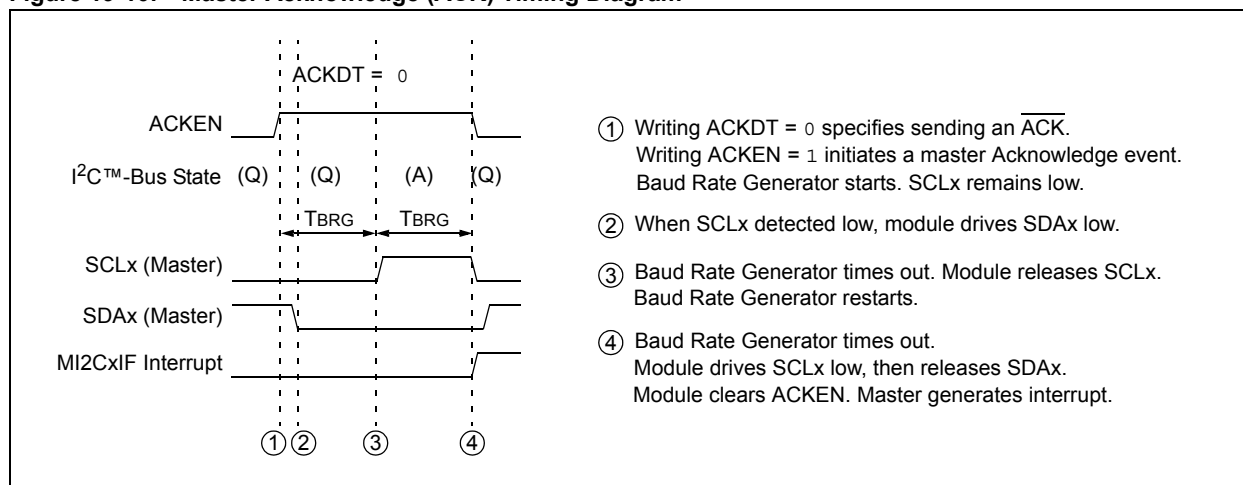
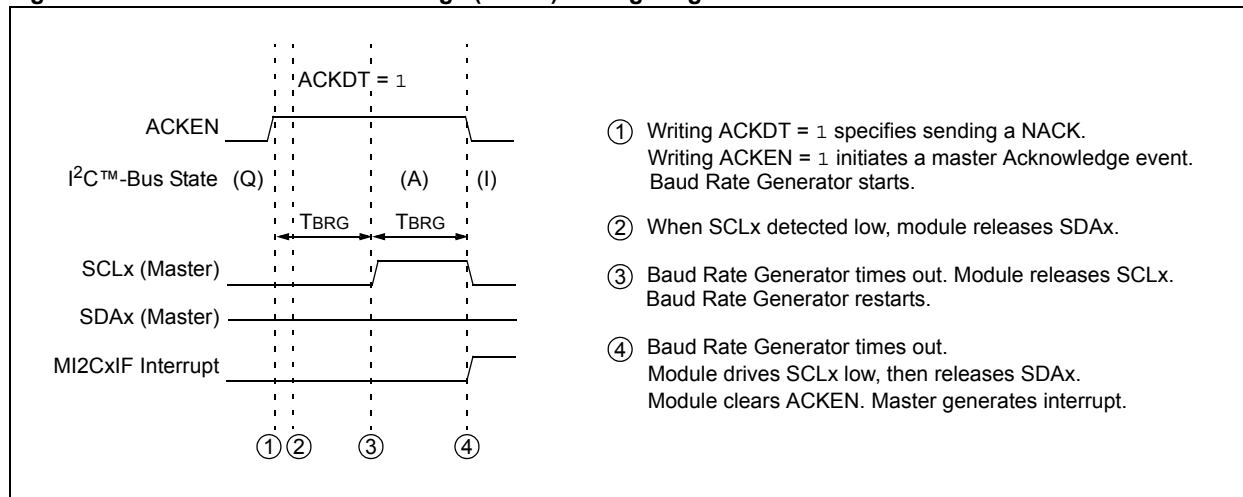


Figure 19-11: Master Not Acknowledge (NACK) Timing Diagram



19.5.5 Generating Stop Bus Event

Setting the Stop Enable bit, PEN (I2CxCON<2>), enables generation of a master Stop sequence.

Note: The lower 5 bits of the I2CxCON register must be '0' (master logic inactive) before attempting to set the PEN bit.

When the PEN bit is set, the master generates the Stop sequence as illustrated in Figure 19-12.

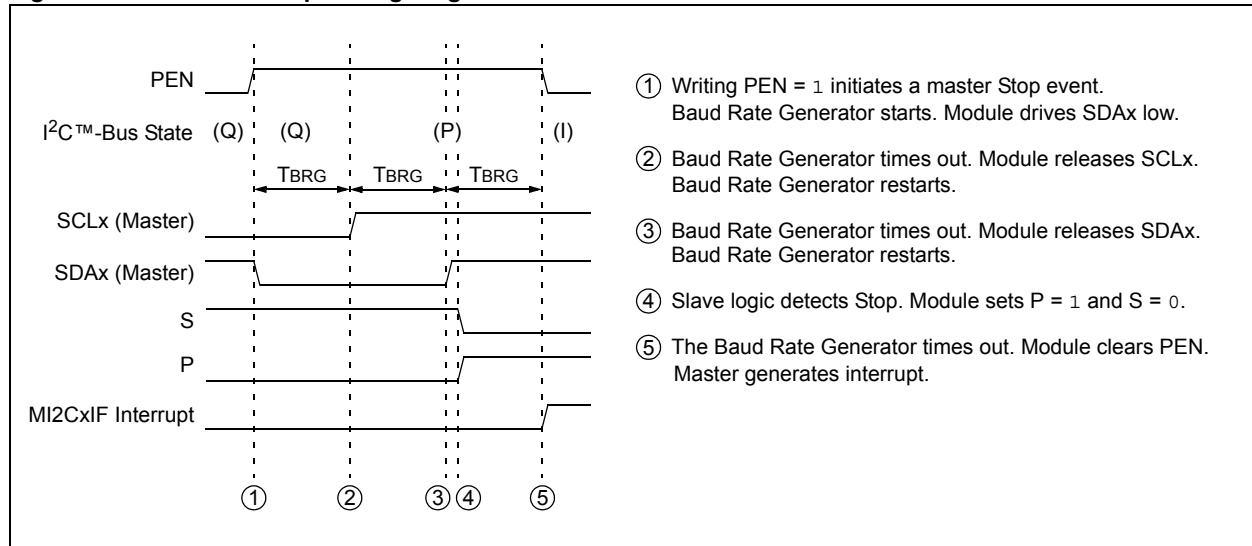
- The slave detects the Stop condition, sets the P status bit (I2CxSTAT<4>), and clears the S status bit (I2CxSTAT<3>).
- The PEN bit is automatically cleared.
- The module generates the MI2CxIF interrupt.

19.5.5.1 IWCOL STATUS FLAG

If the software writes to the I2CxTRN register when a Stop sequence is in progress, the IWCOL status bit (I2CxSTAT<7>) is set and the contents of the buffer are unchanged (the write does not occur).

Note: Because queueing of events is not allowed, writing to the lower 5 bits of the I2CxCON register is disabled until the Stop condition is complete.

Figure 19-12: Master Stop Timing Diagram



19.5.6 Generating Repeated Start Bus Event

Setting the Repeated Start Enable bit, RSEN (I2CxCON<1>), enables generation of a master Repeated Start sequence (see Figure 19-13).

Note: The lower 5 bits of the I2CxCON register must be '0' (master logic inactive) before attempting to set the RSEN bit.

The software sets the RSEN bit (I2CxCON<1>), to generate a Repeated Start condition. The module asserts the SCLx pin low. When the module samples the SCLx pin low, the module releases the SDAx pin for one BRG count (TBRG). When the BRG times out and the module samples SDAx high, the module deasserts the SCLx pin. When the module samples the SCLx pin high, the BRG reloads and begins counting. SDAx and SCLx must be sampled high for one TBRG. This action is then followed by assertion of the SDAx pin low for one TBRG while SCLx is high.

The following is the Repeated Start sequence:

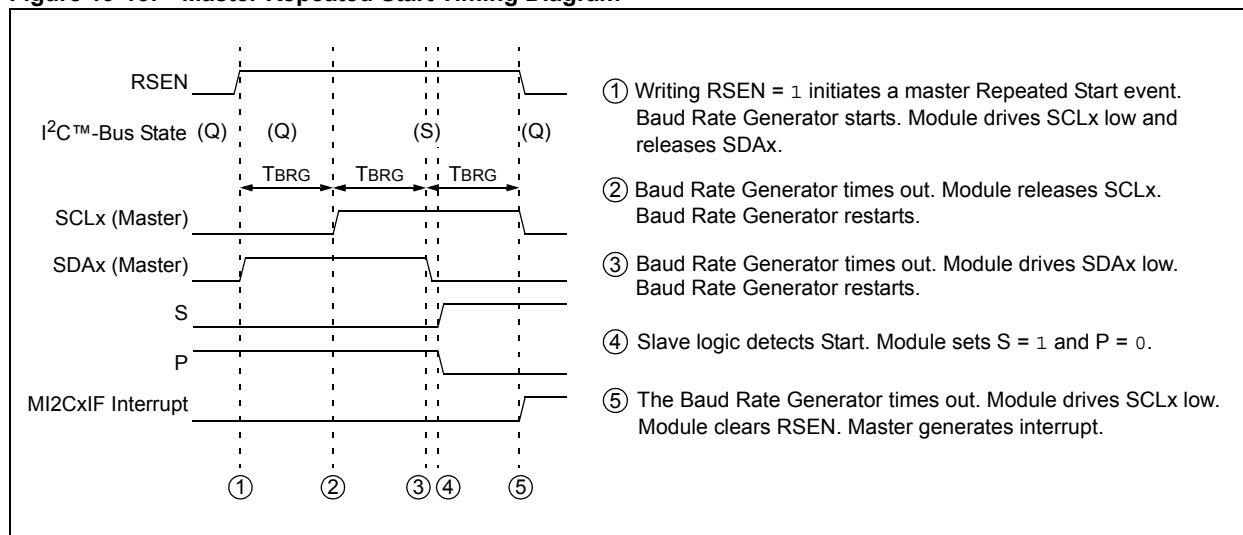
1. The slave detects the Start condition, sets the S status bit (I2CxSTAT<3>) and clears the P status bit (I2CxSTAT<4>).
2. The RSEN bit (I2CxCON<1>) is automatically cleared.
3. The module generates the MI2CxIF interrupt.

19.5.6.1 IWCOL STATUS FLAG

If the software writes to the I2CxTRN register when a Repeated Start sequence is in progress, the IWCOL status bit (I2CxSTAT<7>) is set and the contents of the buffer are unchanged (the write does not occur).

Note: Because queueing of events is not allowed, writing of the lower 5 bits of the I2CxCON register is disabled until the Repeated Start condition is complete.

Figure 19-13: Master Repeated Start Timing Diagram



19.5.7 Building Complete Master Messages

As described at the beginning of 19.5 “Communicating as a Master in a Single-Master Environment”, the software is responsible for constructing messages with the correct message protocol. The module controls individual portions of the I²C message protocol; however, sequencing of the components of the protocol to construct a complete message is a software task.

The software can use polling or interrupt methods while using the module. The examples shown use interrupts.

The software can use the SEN, RSEN, PEN, RCEN and ACKEN bits (Least Significant 5 bits of the I2CxCON register) and the TRSTAT status bit as a ‘state’ flag when progressing through a message. For example, Table 19-2 lists some example state numbers associated with bus states.

Table 19-2: Master Message Protocol States

Example State Number	ACKEN, RCEN, PEN, RSEN, SEN (I2CxCON<4:0>)	TRSTAT (I2CxSTAT<14>)	State
0	00000	0	Bus Idle or Wait
1	00001	N/A	Sending Start Event
2	00000	1	Master Transmitting
3	00010	N/A	Sending Repeated Start Event
4	00100	N/A	Sending Stop Event
5	01000	N/A	Master Reception
6	10000	N/A	Master Acknowledgement

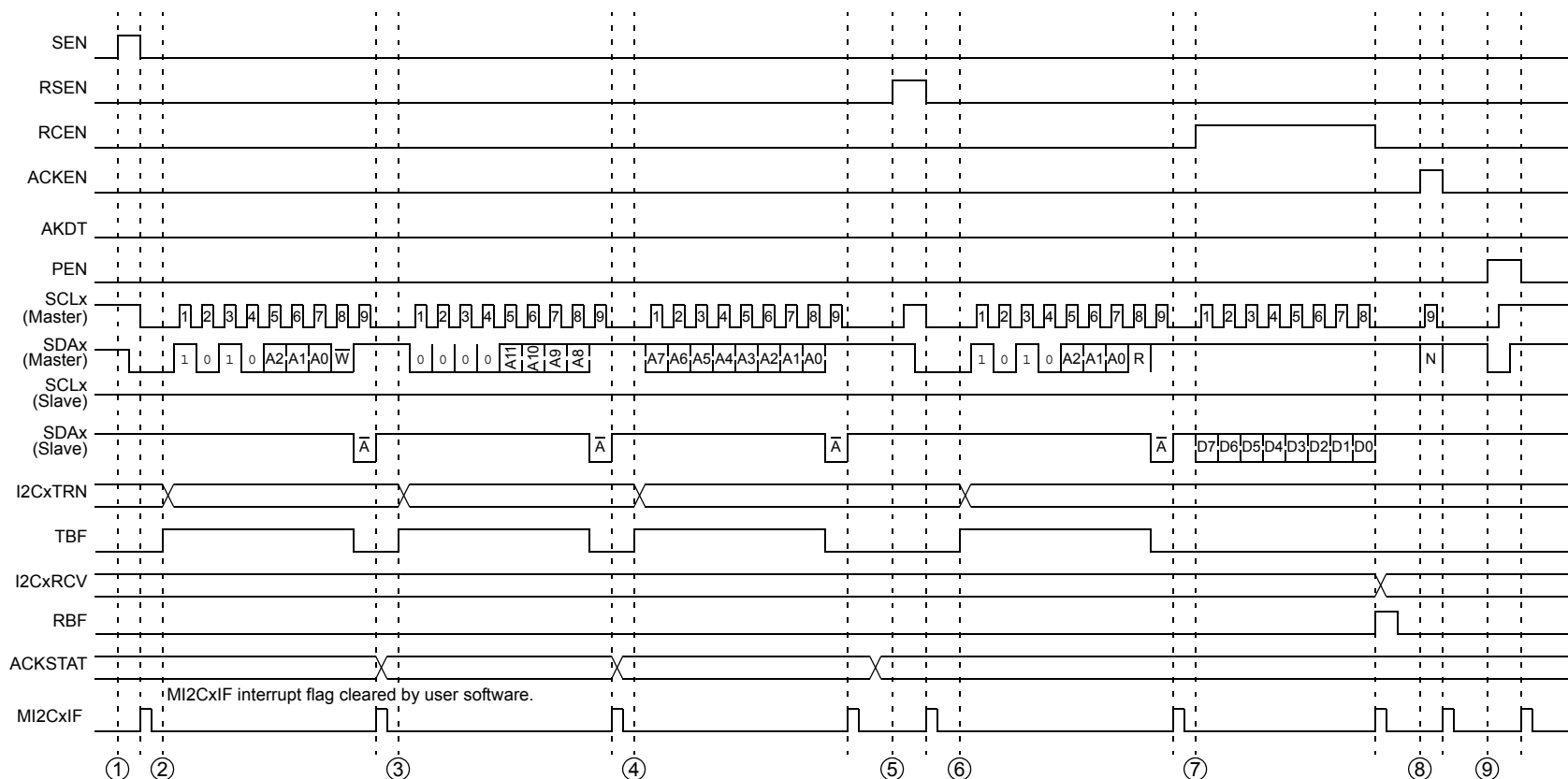
Note: Example state numbers are for reference only. User software can assign state numbers as desired.

The software begins a message by issuing a Start command. It records the state number corresponding to the Start.

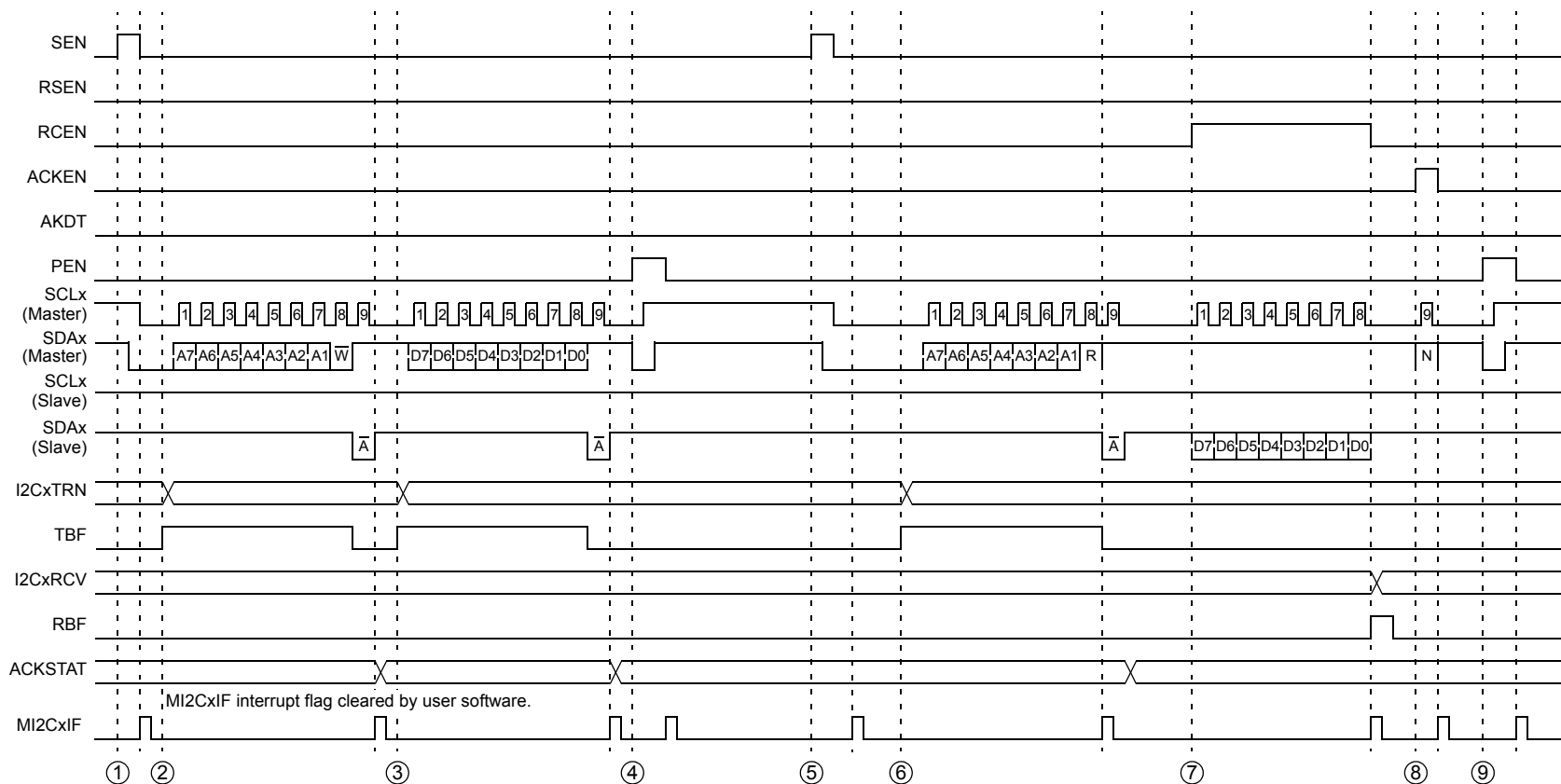
As each event completes and generates an interrupt, the interrupt handler may check the state number. So, for a Start state, the interrupt handler confirms the execution of the Start sequence, and then starts a master transmission event to send the I²C device address, thereby changing the state number to correspond to the master transmission.

On the next interrupt, the interrupt handler again checks the state, determining that a master transmission just completed. The interrupt handler confirms successful transmission of the data, and then moves on to the next event, depending on the contents of the message. In this manner, on each interrupt, the interrupt handler progresses through the message protocol until the complete message is sent.

Figure 19-14 provides a more detailed examination of the message sequence illustrated in Figure 19-6. Figure 19-15 illustrates some simple examples of messages using 7-bit addressing format. Figure 19-16 illustrates an example of a 10-bit addressing format message sending data to a slave. Figure 19-17 illustrates an example of a 10-bit addressing format message receiving data from a slave.

Figure 19-14: Master Message (Typical I²C™ Message: Read of Serial EEPROM)

- ① Setting the SEN bit starts a Start event.
- ② Writing to the I2CxTRN register starts a master transmission. The data is the serial EEPROM device address byte, with R/W status bit clear, indicating a write.
- ③ Writing to the I2CxTRN register starts a master transmission. The data is the first byte of the EEPROM data address.
- ④ Writing to the I2CxTRN register starts a master transmission. The data is the second byte of the EEPROM data address.
- ⑤ Setting the RSEN bit starts a Repeated Start event.
- ⑥ Writing to the I2CxTRN register starts a master transmission. The data is a re-send of the serial EEPROM device address byte, but with R/W status bit set, indicating a read.
- ⑦ Setting the RCEN bit starts a master reception. On interrupt, the software reads the I2CxRCV register, which clears the RBF status bit.
- ⑧ Setting the ACKEN bit starts an Acknowledge event. ACKDT = 1 to send NACK.
- ⑨ Setting the PEN bit starts a master Stop event.

Figure 19-15: Master Message (7-bit Address: Transmission and Reception)

- ① Setting the SEN bit starts a Start event.
- ② Writing to the I2CxTRN register starts a master transmission. The data is the address byte with R/W status bit clear.
- ③ Writing to the I2CxTRN register starts a master transmission. The data is the message byte.
- ④ Setting the PEN bit starts a master Stop event.
- ⑤ Setting the SEN bit starts a Start event.

- ⑥ Writing to the I2CxTRN register starts a master transmission. The data is the address byte with R/W status bit set.
- ⑦ Setting the RCEN bit starts a master reception.
- ⑧ Setting the ACKEN bit starts an Acknowledge event. ACKDT = 1 to send NACK.
- ⑨ Setting the PEN bit starts a master Stop event.

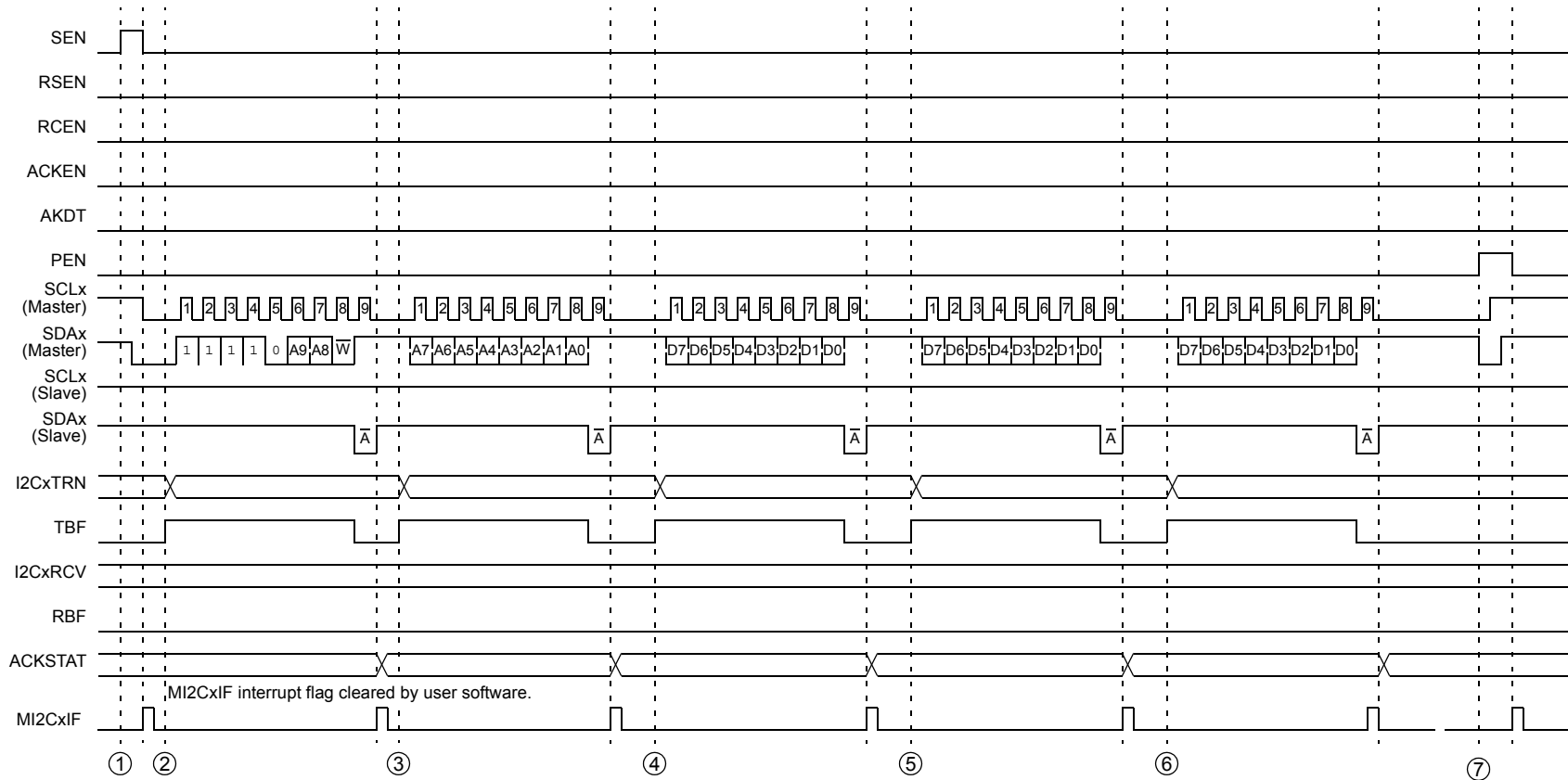
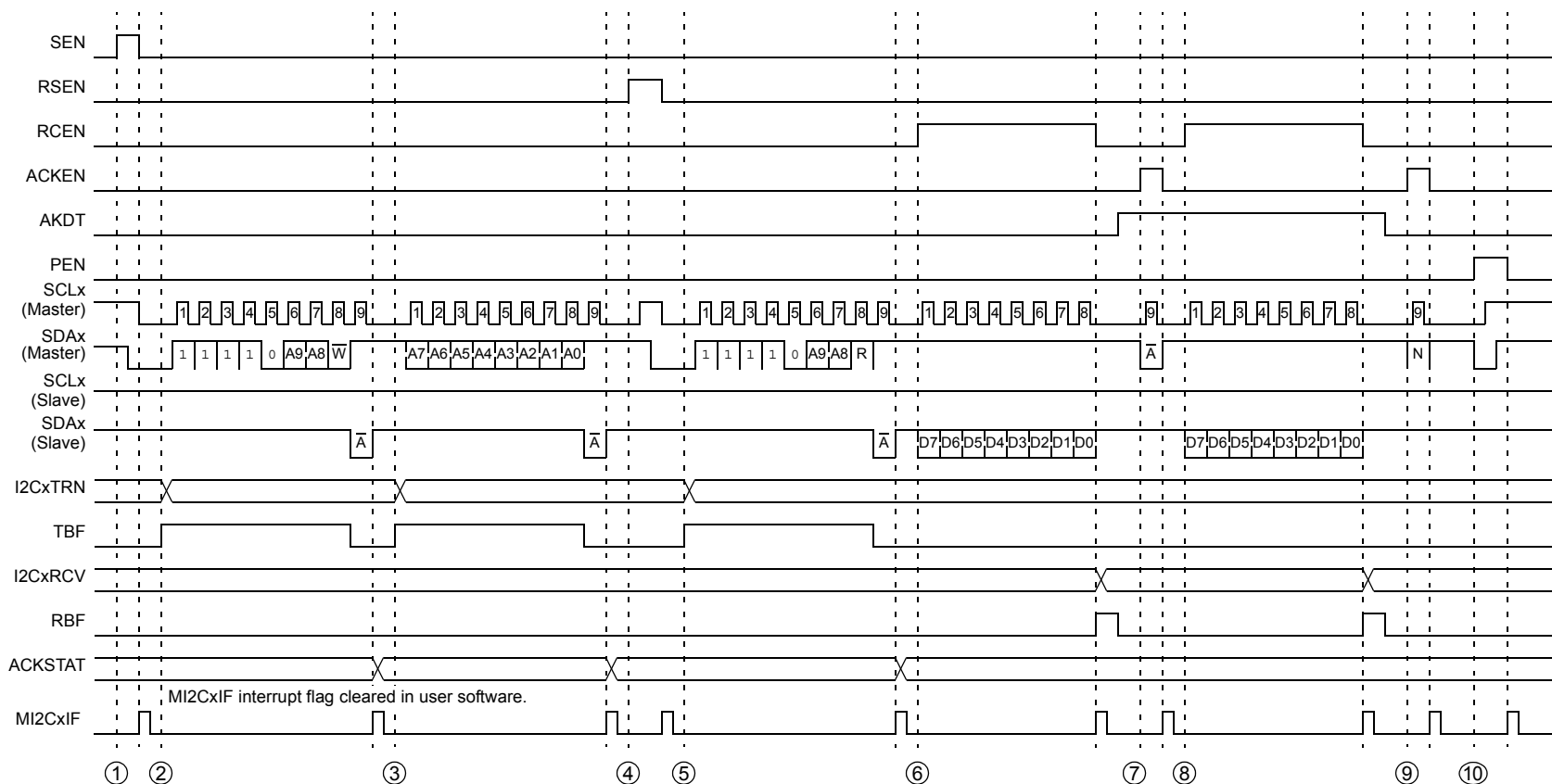
Figure 19-16: Master Message (10-bit Transmission)

Figure 19-17: Master Message (10-bit Reception)

- ① Setting the SEN bit starts a Start event.
- ② Writing to the I2CxTRN register starts a master transmission. The data is the first byte of the address with the R/W status bit cleared.
- ③ Writing to the I2CxTRN register starts a master transmission. The data is the second byte of the address.
- ④ Setting the RSEN bit starts a master Restart event.
- ⑤ Writing to the I2CxTRN register starts a master transmission. The data is a re-send of the first byte with the R/W status bit set.
- ⑥ Setting the RCEN bit starts a master reception. On interrupt, the software reads the I2CxRCV register, which clears the RBF status bit.
- ⑦ Setting the ACKEN bit starts an Acknowledge event. ACKDT = 0 to send $\overline{\text{ACK}}$.
- ⑧ Setting the RCEN bit starts a master reception.
- ⑨ Setting the ACKEN bit starts an Acknowledge event. ACKDT = 1 to send NACK.
- ⑩ Setting the PEN bit starts a master Stop event.

19.6 COMMUNICATING AS A MASTER IN A MULTI-MASTER ENVIRONMENT

The I²C protocol allows for more than one master to be attached to a system bus. Taking into account that a master can initiate message transactions and generate clocks for the bus, the protocol has methods to account for situations where more than one master is attempting to control the bus. Clock synchronization ensures that multiple nodes can synchronize their SCLx clocks to result in one common clock on the SCLx line. Bus arbitration ensures that if more than one node attempts a message transaction, only one node will be successful in completing the message. The other nodes lose bus arbitration and are left with a bus collision.

19.6.1 Multi-Master Operation

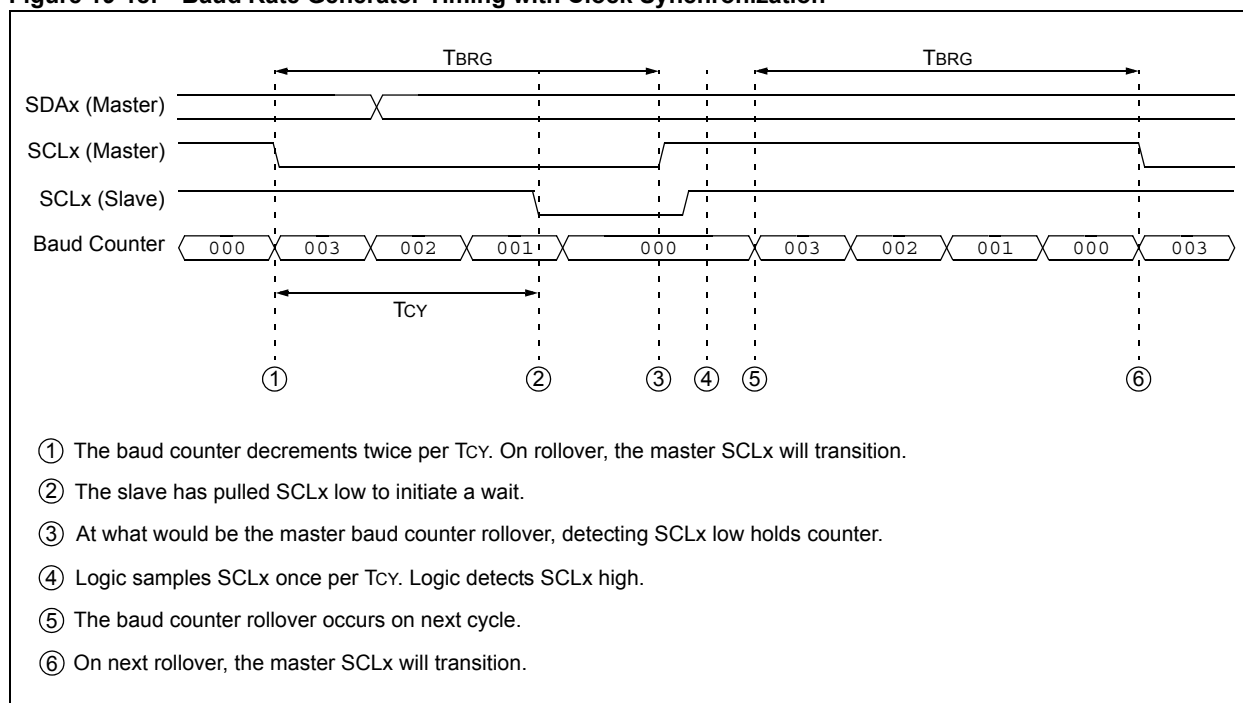
The master module has no special settings to enable multi-master operation. The module performs clock synchronization and bus arbitration at all times. If the module is used in a single master environment, only clock synchronization occurs between the master and slaves; bus arbitration does not occur.

19.6.2 Master Clock Synchronization

In a multi-master system, different masters can have different baud rates. Clock synchronization ensures that when these masters are attempting to arbitrate the bus, their clocks will be coordinated.

Clock synchronization occurs when the master deasserts the SCLx pin (SCLx intended to float high). When the SCLx pin is released, the BRG is suspended from counting until the SCLx pin is actually sampled high. When the SCLx pin is sampled high, the BRG is reloaded with the contents of I2CxBRG<8:0> bits and begins counting. This ensures that the SCLx high time will always be at least one BRG rollover count in the event that the clock is held low by an external device, as illustrated in Figure 19-18.

Figure 19-18: Baud Rate Generator Timing with Clock Synchronization



19.6.3 Bus Arbitration and Bus Collision

Bus arbitration supports multi-master system operation. The wired AND nature of the SDAx line permits arbitration. Arbitration takes place when the first master outputs a '1' on SDAx by letting SDAx float high and simultaneously, the second master outputs a '0' on SDAx by pulling SDAx low. In this case, the second master has won bus arbitration. The first master has lost bus arbitration and thus, has a bus collision.

For the first master, the expected data on SDAx is a '1', yet the data sampled on SDAx is a '0'. This is the definition of a bus collision.

The first master sets the Master Bus Collision bit, BCL (I2CxSTAT<10>), and generates a master interrupt. The master module resets the I²C port to its idle state.

In multi-master operation, the SDAx line must be monitored for arbitration to see if the signal level is the expected output level. This check is performed by the master module, with the result placed in the BCL status bit.

The states where arbitration can be lost are:

- A Start condition
- A Repeated Start condition
- The Address, Data, or Acknowledge bit
- A Stop condition

19.6.4 Detecting Bus Collisions and Re-sending Messages

When a bus collision occurs, the module sets the BCL status bit (I2CxSTAT<10>) and generates a master interrupt. If a bus collision occurs during a byte transmission, the transmission is halted, the TBF status bit (I2CxSTAT<0>) is cleared, and the SDAx and SCLx pins are deasserted. If a bus collision occurs during a Start, Repeated Start, Stop, or Acknowledge condition, the condition is aborted, the respective control bits in the I2CxCON register are cleared, and the SDAx and SCLx lines are deasserted.

The software is expecting an interrupt at the completion of the master event. The software can check the BCL status bit to determine if the master event is completed successfully or a bus collision occurred. If a bus collision occurs, the software must abort sending the rest of the pending message and prepare to re-send the entire message sequence, beginning with the Start condition, after the bus returns to an Idle state. The software can monitor the P and S status bits (I2CxSTAT<4> and I2CxSTAT<3>) to wait for an Idle bus. When the software services the master Interrupt Service Routine and the I²C-bus is free, the software can resume communication by asserting a Start condition.

19.6.5 Bus Collision During a Start Condition

Before issuing a Start command, the software should verify an Idle state of the bus using the S and P status bits. Two masters may attempt to initiate a message at a similar point in time. Typically, the masters synchronize clocks and continue arbitration into the message until one loses arbitration. However, the following conditions can cause a bus collision to occur during a Start:

- If the SDA and SCL pins are at a low logic state at the beginning of the Start condition, or
- If the SCL line is at a low logic state before the SDA line is driven low.

In either case, the master that loses arbitration during the Start bit generates a bus collision interrupt.

19.6.6 Bus Collision During a Repeated Start Condition

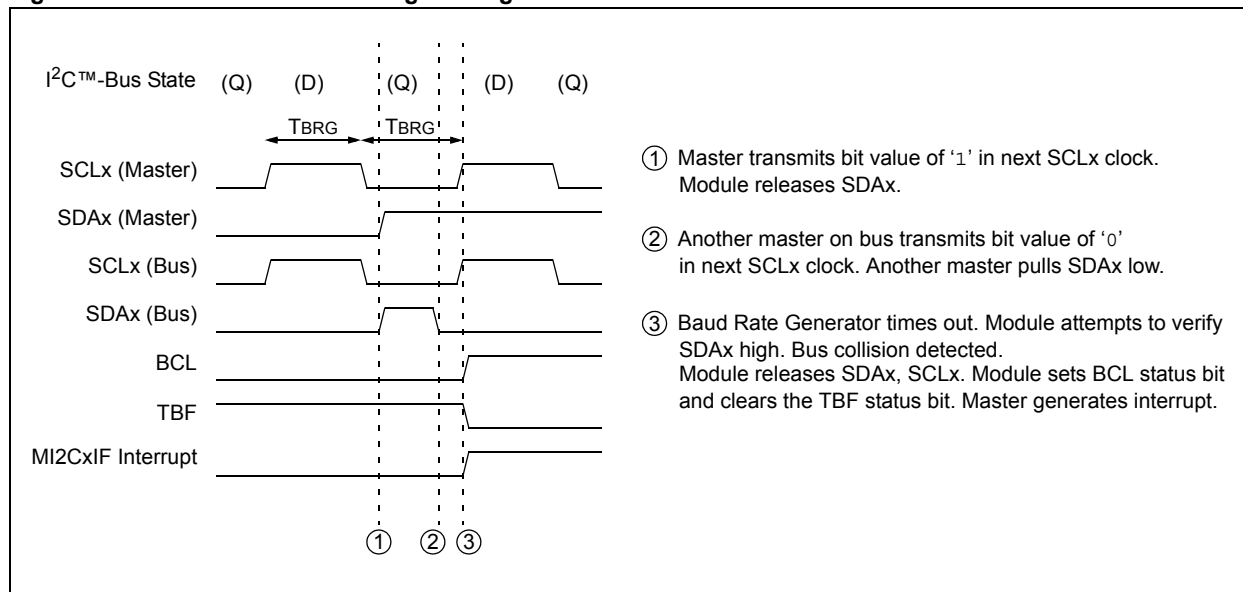
Should two masters not collide throughout an address byte, a bus collision can occur when one master attempts to assert a Repeated Start while another transmits data. In this case, the master generating the Repeated Start loses arbitration and generates a bus collision interrupt.

19.6.7 Bus Collision During Message Bit Transmission

The most typical case of data collision occurs while the master is attempting to transmit the device address byte, a data byte or an Acknowledge bit.

If the software is properly checking the bus state, it is unlikely that a bus collision occurs on a Start condition. However, because another master can, at a very similar time, check the bus and initiate its own Start condition, it is likely that SDAx arbitration will occur and synchronize the Start of two masters. In this condition, both masters begin and continue to transmit their messages until one master loses arbitration on a message bit. Note that the SCLx clock synchronization keeps the two masters synchronized until one loses arbitration. Figure 19-19 illustrates an example of message bit arbitration.

Figure 19-19: Bus Collision During Message Bit Transmission



19.6.8 Bus Collision During a Stop Condition

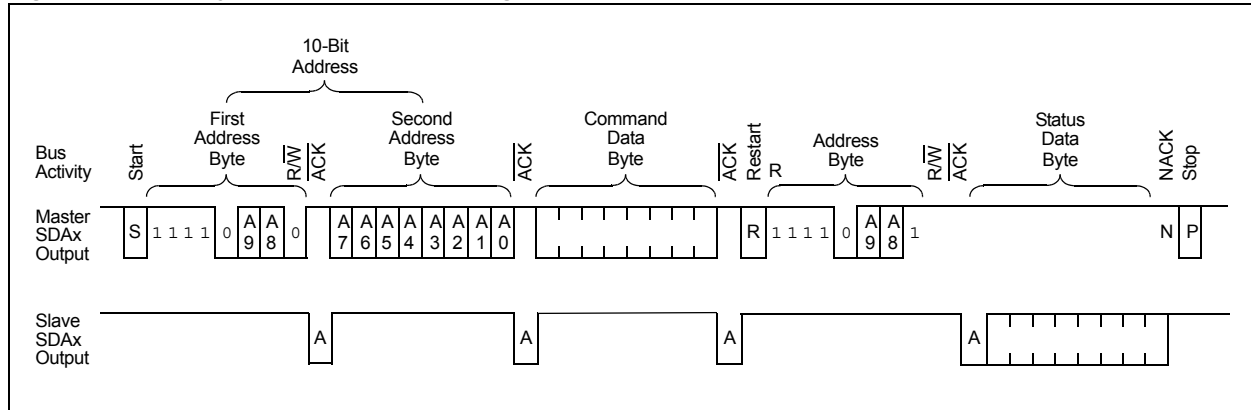
If the master software loses track of the state of the I²C-bus, there are conditions too numerous to mention that can cause a bus collision during a Stop condition. In this case, the master generating the Stop condition loses arbitration and generates a bus collision interrupt.

19.7 COMMUNICATING AS A SLAVE

In some systems, particularly where multiple processors communicate with each other, the dsPIC33E/PIC24E device can communicate as a slave (see Figure 19-20). When the module is enabled, the slave module is active. The slave cannot initiate a message, it can only respond to a message sequence initiated by a master. The master requests a response from a particular slave as defined by the device address byte in the I²C protocol. The slave module replies to the master at the appropriate times as defined by the protocol.

As with the master module, sequencing the components of the protocol for the reply is a software task. However, the slave module detects when the device address matches the address specified by the software for that slave.

Figure 19-20: A Typical Slave I²C™ Message: Multiprocessor Command/Status



After a Start condition, the slave module receives and checks the device address. The slave can specify either a 7-bit address or a 10-bit address. When a device address is matched, the module generates an interrupt to notify the software that its device is selected. Based on the R/W status bit (I2CxSTAT<2>) sent by the master, the slave either receives or transmits data. If the slave is to receive data, the slave module automatically generates the Acknowledge (ACK), loads the I2CxRCV register with the received value currently in the I2CxRSR register, and notifies the software through an interrupt. If the slave is to transmit data, the software must load the I2CxTRN register.

19.7.1 Sampling Receive Data

All incoming bits are sampled with the rising edge of the clock (SCLx) line.

19.7.2 Detecting Start and Stop Conditions

The slave module detects Start and Stop conditions on the bus and indicates that status on the S status bit (I2CxSTAT<3>) and P status bit (I2CxSTAT<4>). The Start (S) and Stop (P) status bits are cleared when a Reset occurs or when the module is disabled. After detection of a Start or Repeated Start event, the S status bit is set and the P status bit is cleared. After detection of a Stop event, the P status bit is set and the S status bit is clear.

19.7.3 Detecting the Address

Once the module has been enabled, the slave module waits for a Start condition to occur. After a Start, depending on the A10M bit (I2CxCON<10>), the slave attempts to detect a 7-bit or 10-bit address. The slave module compares one received byte for a 7-bit address or two received bytes for a 10-bit address. A 7-bit address also contains an R/W status bit that specifies the direction of data transfer after the address. If $R/\overline{W} = 0$, a write is specified and the slave receives data from the master. If $R/\overline{W} = 1$, a read is specified and the slave sends data to the master. The 10-bit address contains an R/W status bit; however, by definition, it is always $R/\overline{W} = 0$ because the slave must receive the second byte of the 10-bit address.

19.7.3.1 SLAVE ADDRESS MASKING

The I2CxMSK register masks address bit positions, designating them as “don’t care” bits for both 10-bit and 7-bit Addressing modes. When a bit in the I2CxMSK register is set (= 1), the slave module responds when the bit in the corresponding location of the address is a ‘0’ or ‘1’. For example, in 7-bit Slave mode with I2CxMSK = 0100000, the module acknowledges addresses ‘0000000’ and ‘0100000’ as valid.

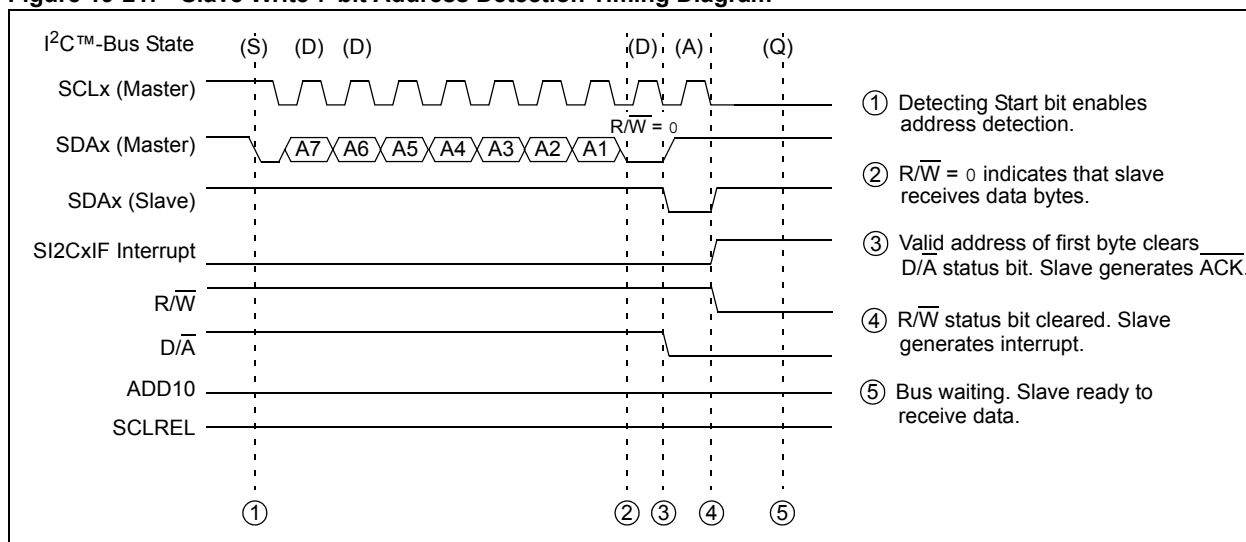
To enable address masking, the Intelligent Platform Management Interface must be disabled by clearing the IPMIEN bit (I2CxCON<11>).

19.7.3.2 7-BIT ADDRESS AND SLAVE WRITE

Following the Start condition, the module shifts 8 bits into the I2CxRSR register (see Figure 19-21). The value of register I2CxRSR<7:1> is evaluated against that of the I2CxADD<6:0> and I2CxMSK<6:0> registers on the falling edge of the eighth clock (SCLx). If the address is valid (i.e., an exact match between unmasked bit positions), the following events occur:

1. An $\overline{\text{ACK}}$ is generated.
2. The D/A and R/W status bits are cleared.
3. The module generates the SI2CxIF interrupt on the falling edge of the ninth SCLx clock.
4. The module waits for the master to send data.

Figure 19-21: Slave Write 7-bit Address Detection Timing Diagram



19.7.3.3 7-BIT ADDRESS AND SLAVE READ

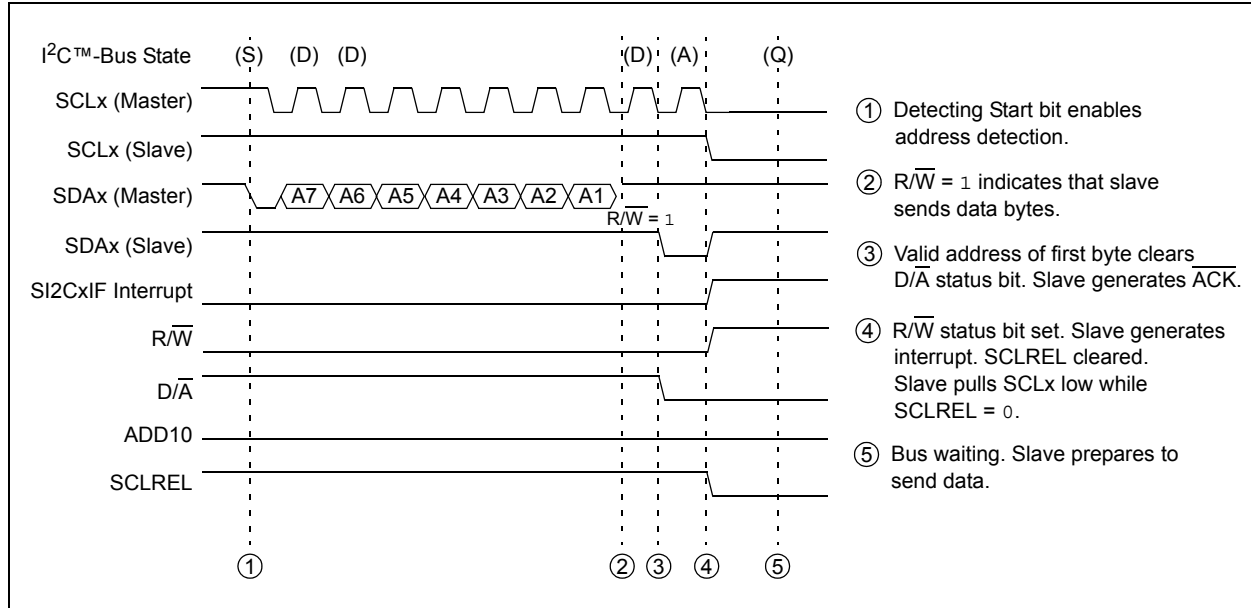
When a slave read is specified by having $\overline{\text{R/W}} = 1$ in a 7-bit address byte, the process of detecting the device address is similar to that for a slave write (see Figure 19-22). If the addresses match, the following events occur:

1. An $\overline{\text{ACK}}$ is generated.
2. The D/A status bit is cleared and the $\overline{\text{R/W}}$ status bit is set.
3. The module generates the SI2CxIF interrupt on the falling edge of the ninth SCLx clock.

As the slave module is expected to reply with data at this point, it is necessary to suspend the operation of the I²C-bus to allow the software to prepare a response. This is done automatically when the module clears the SCLREL bit (I2CxCON<12>). With SCLREL low, the slave module will pull down the SCLx clock line, causing a wait on the I²C-bus. The slave module and the I²C-bus remain in this state until the software writes to the I2CxTRN register with the response data and sets the SCLREL bit.

Note: SCLREL will automatically clear after detection of a slave read address, regardless of the state of the STREN bit.

Figure 19-22: Slave Read 7-bit Address Detection Timing Diagram



19.7.3.4 10-BIT ADDRESSING MODE

In 10-bit Addressing mode, the slave must receive two device address bytes (see Figure 19-23). The five Most Significant bits (MSBs) of the first address byte specify a 10-bit address. The R/\bar{W} status bit ($I2CxSTAT<2>$) of the address must specify a write, causing the slave device to receive the second address byte. For a 10-bit address, the first byte would equal '11110 A9 A8 0', where 'A9' and 'A8' are the two MSBs of the address.

The $I2CxMSK$ register can mask any bit position in a 10-bit address. The two MSBs of the $I2CxMSK$ register are used to mask the MSBs of the incoming address received in the first byte. The remaining byte of the register is then used to mask the lower byte of the address received in the second byte.

Following the Start condition, the module shifts eight bits into the $I2CxRSR$ register. The value of the $I2CxRSR<2:1>$ bits are evaluated against the value of the $I2CxADD<9:8>$ and $I2CxMSK<9:8>$ bits, while the value of the $I2CxRSR<7:3>$ bits are compared to '11110'. Address evaluation occurs on the falling edge of the eighth clock ($SCLx$). For the address to be valid, $I2CxRSR<7:3>$ must equal '11110', while $I2CxRSR<2:1>$ must exactly match any unmasked bits in $I2CxADD<9:8>$. (If both bits are masked, a match is not needed.) If the address is valid, the following events occur:

1. An \overline{ACK} is generated.
2. The D/\bar{A} and R/\bar{W} status bits ($I2CxSTAT<5>$ and $I2CxSTAT<2>$) are cleared.
3. The module generates the $SI2CxIF$ interrupt on the falling edge of the ninth $SCLx$ clock.

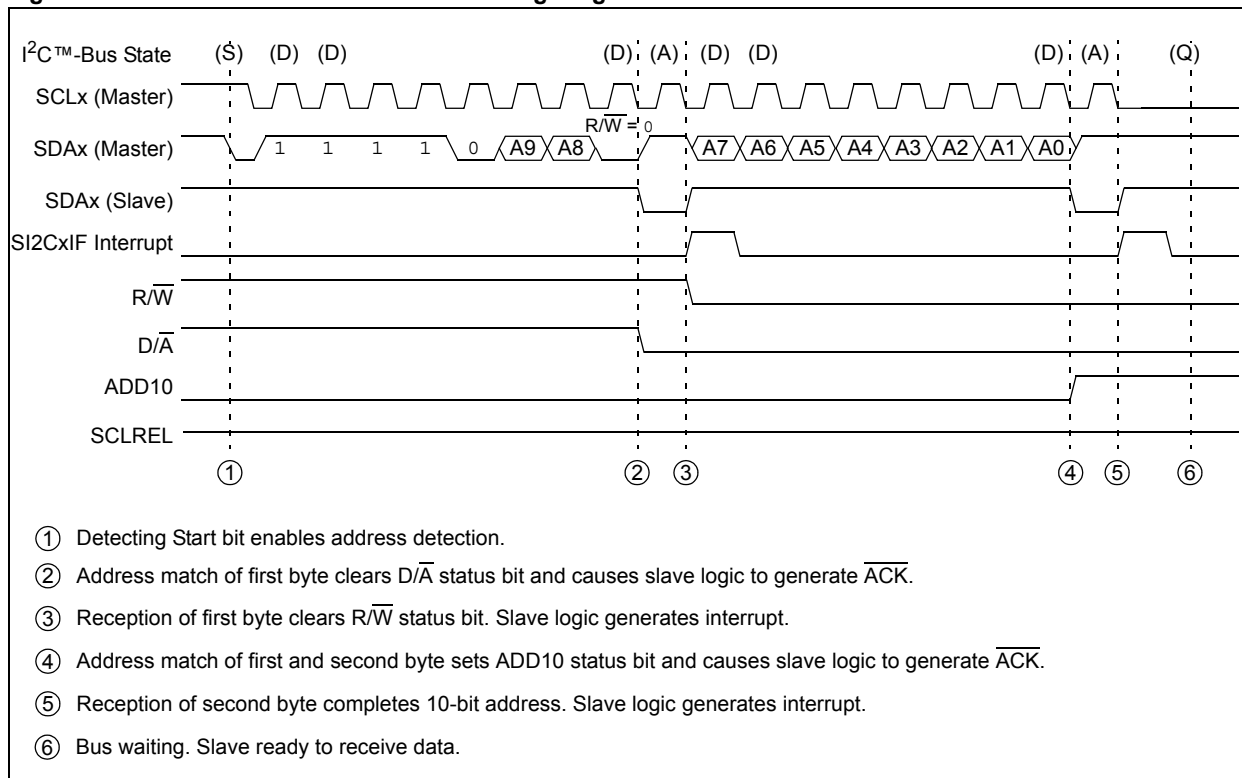
The module generates an interrupt after the reception of the first byte of a 10-bit address.

The module continues to receive the second byte into the $I2CxRSR$ register. This time, the $I2CxRSR<7:0>$ bits are evaluated against the $I2CxADD<7:0>$ and $I2CxMSK<7:0>$ bits. If the lower byte of the address is valid as previously described, the following events occur:

1. An \overline{ACK} is generated.
2. The $ADD10$ status bit ($I2CxSTAT<8>$) is set.
3. The module generates the $SI2CxIF$ interrupt on the falling edge of the ninth $SCLx$ clock.
4. The module wait for the master to send data or initiate a Repeated Start condition.

Note: Following a Repeated Start condition in 10-bit Addressing mode, the slave module only matches the first 7-bit address, '11110 A9 A8 0'.

Figure 19-23: 10-bit Address Detection Timing Diagram



19.7.3.5 GENERAL CALL OPERATION

The addressing procedure for the I²C-bus is such that the first byte after a Start condition usually determines which slave device the master is addressing. The exception is the general call address, which can address all devices. When this address is used, all enabled devices respond with an Acknowledge. The general call address is one of eight addresses reserved for specific purposes by the I²C protocol. It consists of all '0's with $\overline{R/W} = 0$. The general call is always a slave write operation.

The general call address is recognized when the General Call Enable bit, GCEN (I2CxCON<7>), is set (see Figure 19-24). Following a Start bit detect, eight bits are shifted into the I2CxRSR register, and the address is compared against the I2CxADD register and the general call address.

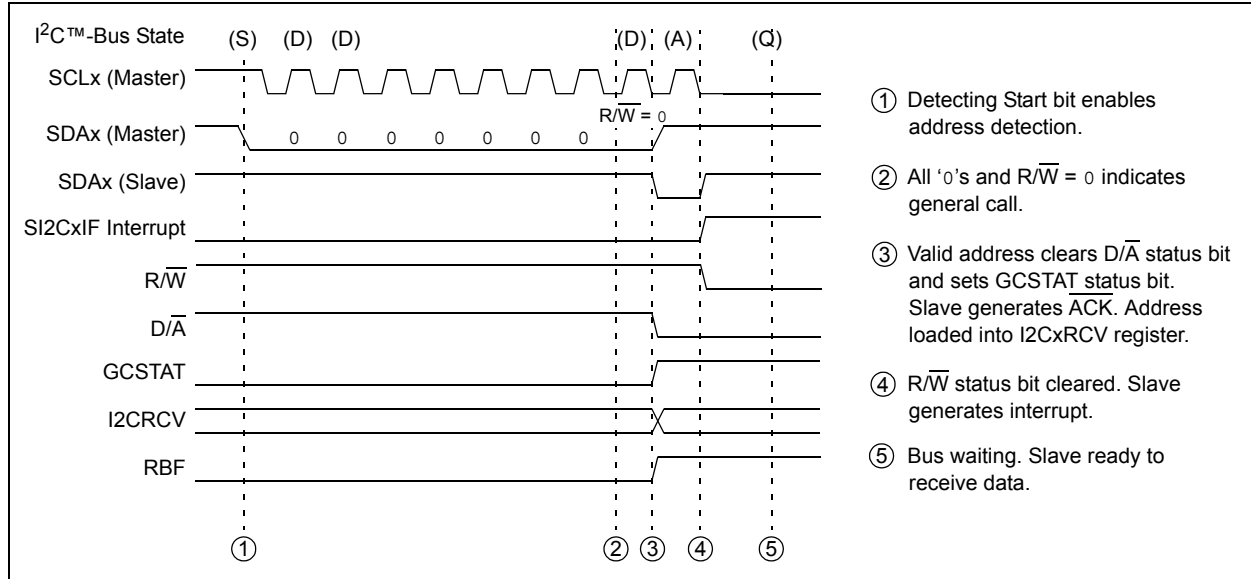
If the general call address matches, the following events occur:

1. An \overline{ACK} is generated.
2. Slave module sets the GCSTAT status bit (I2CxSTAT<9>).
3. The $\overline{D/A}$ and $\overline{R/W}$ status bits (I2CxSTAT<5> and I2CxSTAT<2>) are cleared.
4. The module generates the SI2CxIF interrupt on the falling edge of the ninth SCLx clock.
5. The I2CxRSR register is transferred to the I2CxRCV register, and the RBF status bit (I2CxSTAT<1>) is set (during the eighth bit).
6. The module waits for the master to send data.

When the interrupt is serviced, the cause for the interrupt can be checked by reading the contents of the GCSTAT status bit (I2CxSTAT<9>) to determine if the device address was device specific or a general call address.

Note that general call addresses are 7-bit addresses. If configuring the slave module for 10-bit addresses with the A10M and GCEN bits (I2CxCON<10> and I2CxCON<7>) set, the slave module will continue to detect the 7-bit general call address.

Figure 19-24: General Call Address Detection Timing Diagram (GCEN = 1)



19.7.3.6 RECEIVING ALL ADDRESSES (IPMI OPERATION)

Some I²C system protocols require a slave to act upon all messages on the bus. For example, the IPMI bus uses I²C nodes as message repeaters in a distributed network. To allow a node to repeat all messages, the slave module must accept all messages, regardless of the device address.

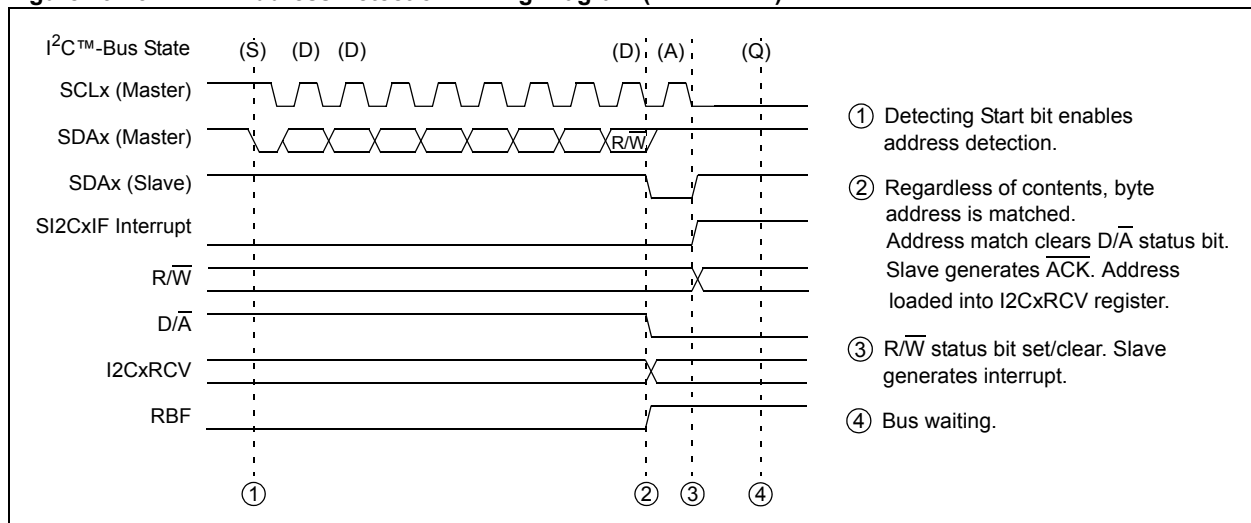
To enable IPMI mode, set the IPMIEN bit (I2CxCON<11>); see Figure 19-25. Regardless of the state of the A10M and GCEN bits (I2CxCON<10> and I2CxCON<7>) or the value loaded in the I2CxADD register, all addresses are accepted.

Note 1: When performing master operations, ensure that the IPMIEN bit (I2CxCON<11>) is clear.

2: The IPMI mode does not support 10-bit addressing.

3: If IPMI Addressing mode is active, the slave, on receiving an Address byte from the master, should inspect the R/\overline{W} bit (I2CxSTAT<2>) and ignore the message if the R/\overline{W} bit value is '1'. Typically, this action is not required in IPMI mode, as the Address byte sent by the master is supposed to have the R/\overline{W} bit value as '0'.

Figure 19-25: IPMI Address Detection Timing Diagram (IPMIEN = 1)



19.7.3.7 WHEN AN ADDRESS IS INVALID

If a 7-bit address does not match with the contents of I2CxADD<6:0>, the slave module returns to an idle state and ignores all bus activity until after the Stop condition.

If the first byte of a 10-bit address does not match the contents of I2CxADD<9:8>, the slave module returns to an idle state and ignores all bus activity until after the Stop condition.

If the first byte of a 10-bit address matches the contents of I2CxADD<9:8> but the second byte of the 10-bit address does not match I2CxADD<7:0>, the slave module returns to an idle state and ignores all bus activity until after the Stop condition.

19.7.3.8 ADDRESSES RESERVED FROM MASKING

Even when enabled, there are several addresses that are excluded in hardware from masking. For these addresses, an Acknowledge will not be issued independent of the mask setting. These addresses are listed in Table 19-3.

Table 19-3: Reserved I²C™-Bus Addresses⁽¹⁾

7-bit Address Mode		
Slave Address	R/W Bit	Description
0000 000	0	General Call Address ⁽¹⁾
0000 000	1	Start Byte
0000 001	x	CBUS Address
0000 010	x	Reserved
0000 011	x	Reserved
0000 1xx	x	HS Mode Master Code
1111 1xx	x	Reserved
1111 0xx	x	10-bit Slave Upper Byte ⁽²⁾

Note 1: Address will be Acknowledged only if GCEN = 1.

2: Match on this address can only occur as the upper byte in the 10-bit Addressing mode.

19.7.4 Receiving Data from a Master Device

When the R/W status bit of the device address byte is zero and an address match occurs, the R/W status bit (I2CxSTAT<2>) is cleared. The slave module enters a state waiting for data to be sent by the master. After the device address byte, the contents of the data byte are defined by the system protocol and are only received by the slave module.

The slave module shifts eight bits into the I2CxRSR register. On the falling edge of the eighth clock (SCLx), the following events occur:

1. The module begins to generate an $\overline{\text{ACK}}$ or NACK.
2. The RBF status bit (I2CxSTAT<1>) is set to indicate received data.
3. The I2CxRSR register byte is transferred to the I2CxRCV register for access by the software.
4. The D/A status bit (I2CxSTAT<5>) is set.
5. A slave interrupt is generated. Software can check the status of the I2CxSTAT register to determine the cause of the event and then clear the SI2CxIF interrupt flag.
6. The module waits for the next data byte.

19.7.4.1 ACKNOWLEDGE GENERATION

Normally, the slave module acknowledges all received bytes by sending an $\overline{\text{ACK}}$ on the ninth SCLx clock. If the receive buffer is overrun, the slave module does not generate this ACK. Overrun is indicated if either (or both) of the following occur:

1. The buffer full bit, RBF (I2CxSTAT<1>), was set before the transfer was received.
2. The overflow bit, I2COV (I2CxSTAT<6>), was set before the transfer was received.

Table 19-4 shows what happens when a data transfer byte is received, given the status of the RBF and I2COV status bits. If the RBF status bit is already set when the slave module attempts to transfer to the I2CxRCV register, the transfer does not occur but the interrupt is generated and the I2COV status bit is set. If both the RBF and I2COV status bits are set, the slave module acts similarly. The shaded cells show the condition where software did not properly clear the overflow condition.

Reading the I2CxRCV register clears the RBF status bit. The I2COV status bit is cleared by writing '0' through software.

Table 19-4: Data Transfer Received Byte Actions

Status Bits as Data Byte Received		Transfer I2CxRSR to I2CxRCV	Generate $\overline{\text{ACK}}$	Generate SI2CxIF Interrupt (interrupt occurs if enabled)	Set RBF	Set I2COV
RBF	I2COV					
0	0	Yes	Yes	Yes	Yes	No change
1	0	No	No	Yes	No change	Yes
1	1	No	No	Yes	No change	Yes
0	1	Yes	No	Yes	Yes	No change

Legend: Shaded cells indicate the state where the software did not properly clear the overflow condition.

19.7.4.2 WAIT STATES DURING SLAVE RECEPTIONS

When the slave module receives a data byte, the master can potentially begin sending the next byte immediately. This allows the software controlling the slave module nine SCLx clock periods to process the previously received byte. If this time is not enough, the slave software may want to generate a bus wait period.

The STREN bit (I2CxCON<6>) enables a bus wait to occur on slave receptions. When STREN = 1 at the falling edge of the ninth SCLx clock of a received byte, the slave module clears the SCLREL bit (I2CxCON<12>). Clearing the SCLREL bit causes the slave module to pull the SCLx line low, initiating a wait. The SCLx clock of the master and slave synchronizes, as shown in **19.6.2 “Master Clock Synchronization”**.

When the software is ready to resume reception, the software sets SCLREL. This causes the slave module to release the SCLx line, and the master resumes clocking.

19.7.4.3 EXAMPLE MESSAGES OF SLAVE RECEPTION

Receiving a slave message is an automatic process. The software handling the slave protocol uses the slave interrupt to synchronize to the events.

When the slave detects the valid address, the associated interrupt notifies the software to expect a message. On receive data, as each data byte transfers to the I2CxRCV register, an interrupt notifies the software to unload the buffer.

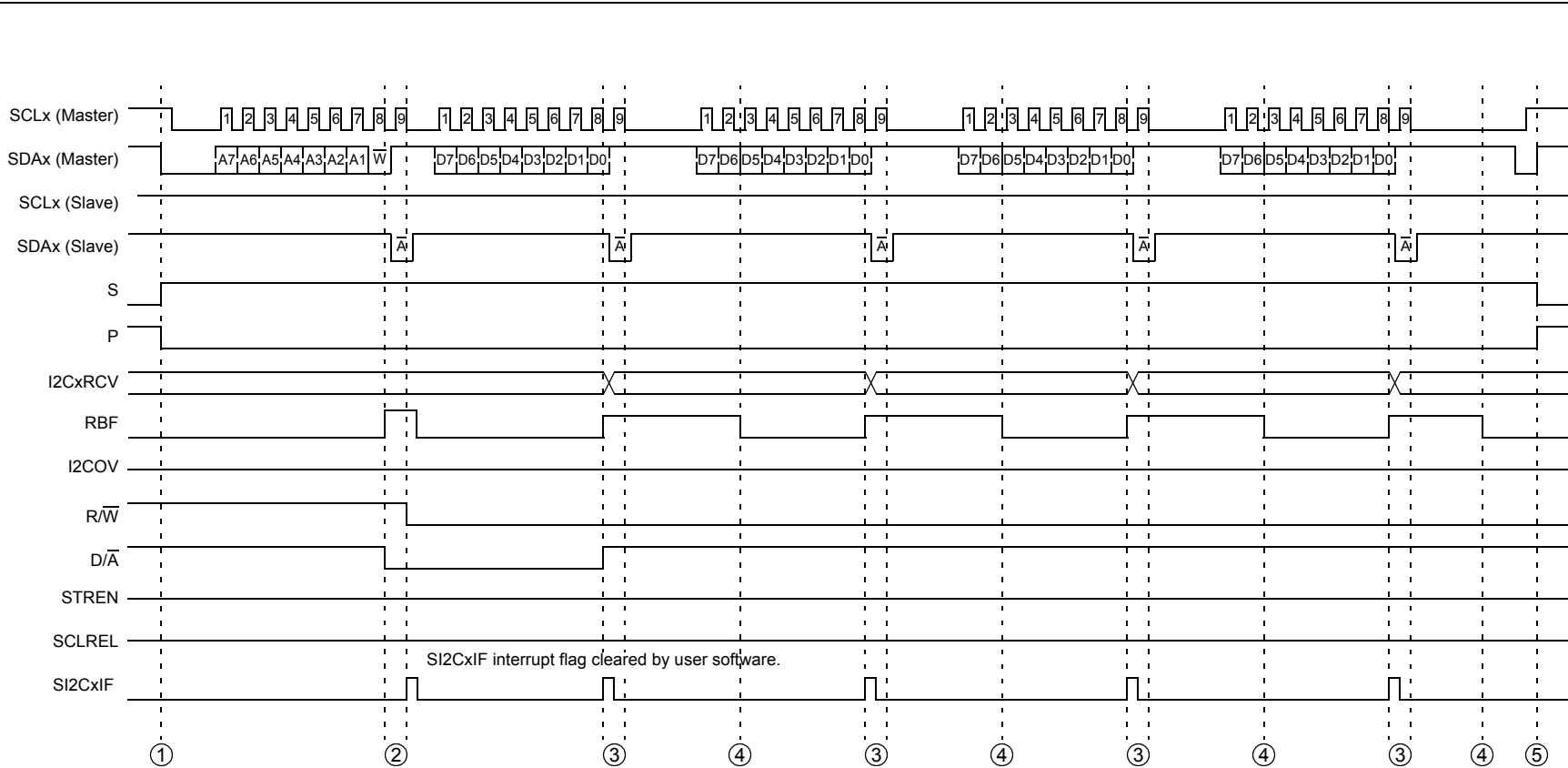
Figure 19-26 illustrates a simple receive message. Because it is a 7-bit address message, only one interrupt occurs for the address bytes. Then, interrupts occur for each of four data bytes. At an interrupt, the software may monitor the RBF, D/A and R/W status bits (I2CxSTAT<1>, I2CxSTAT<5> and I2CxSTAT<2>) to determine the condition of the byte received.

Figure 19-27 illustrates a similar message using a 10-bit address. In this case, two bytes are required for the address.

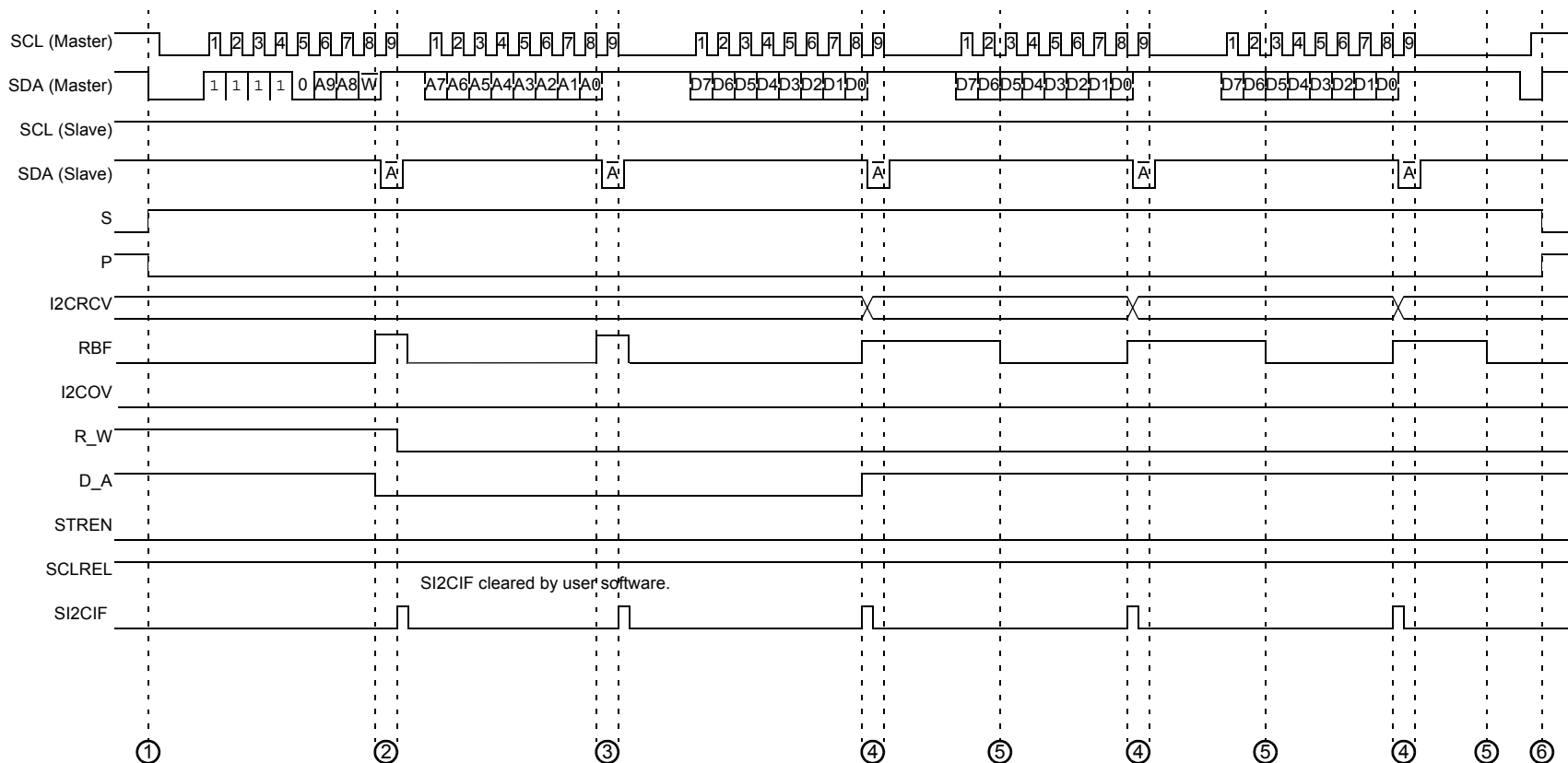
Figure 19-28 illustrates a case where the software does not respond to the received byte and the buffer overruns. On reception of the second byte, the module automatically NACKs the master transmission. Generally, this causes the master to resend the previous byte. The I2COV status bit (I2CxSTAT<6>) indicates that the buffer has overrun. The I2CxRCV register buffer retains the contents of the first byte. On reception of the third byte, the buffer is still full, and again, the module will NACK the master. After this, the software finally reads the buffer. Reading the buffer will clear the RBF status bit; however, the I2COV status bit remains set. The software must clear the I2COV status bit. The next received byte is moved to the I2CxRCV register buffer and the module responds with an ACK.

Figure 19-29 highlights clock stretching while receiving data. In the previous examples, STREN = 0, which disables clock stretching on receive messages. In this example, the software sets STREN to enable clock stretching. When STREN = 1, the module automatically clock stretch after each received data byte, allowing the software more time to move the data from the buffer. If RBF = 1 at the falling edge of the ninth clock, the module automatically clears the SCLREL bit and pulls the SCLx bus line low. As shown with the second received data byte, if the software can read the buffer and clear the RBF status bit before the falling edge of the ninth clock, the clock stretching will not occur. The software can also suspend the bus at any time. By clearing the SCLREL bit, the module pulls the SCLx line low after it detects the bus SCLx low. The SCLx line remains low, suspending transactions on the bus until the SCLREL bit is set.

Figure 19-26: Slave Message (Write Data to Slave: 7-bit Address; Address Matches; A10M = 0; GCEN = 0; IPMIEN = 0)

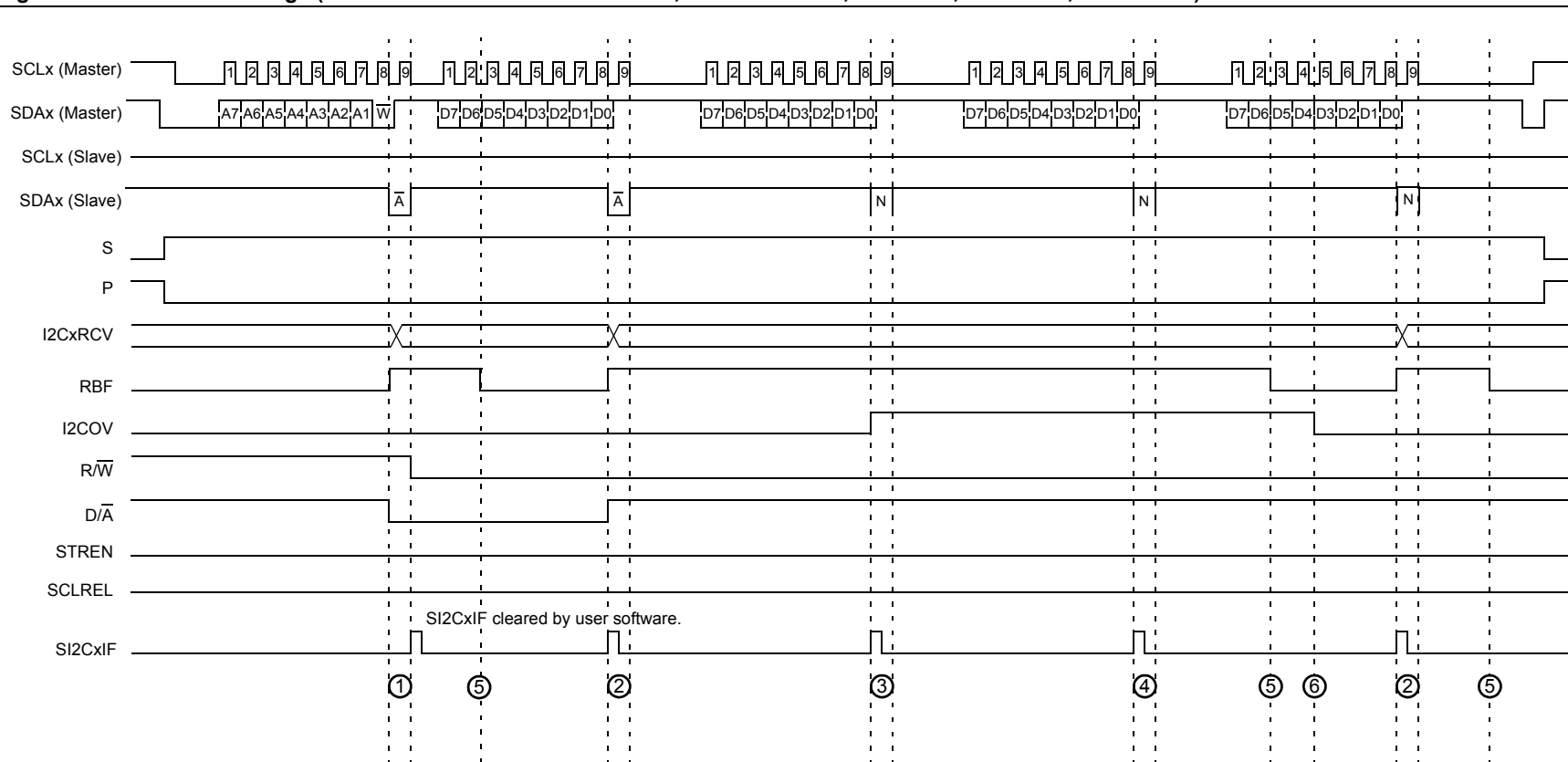


- ① Slave recognizes Start event; S and P status bits set/clear accordingly.
- ② Slave receives address byte. Address matches. Slave Acknowledges and generates interrupt. Address byte is moved to I2CxRCV register and must be read by user software to prevent buffer overflow.
- ③ Next received byte is message data. Byte moved to I2CxRCV register sets the RBF status bit. Slave generates interrupt. Slave Acknowledges reception.
- ④ Software reads I2CxRCV register. RBF bit clears.
- ⑤ Slave recognizes Stop event; S and P status bits set/clear accordingly.

Figure 19-27: Slave Message (Write Data to Slave: 10-bit Address; Address Matches; A10M = 1; GCEN = 0; IPMIEN = 0)

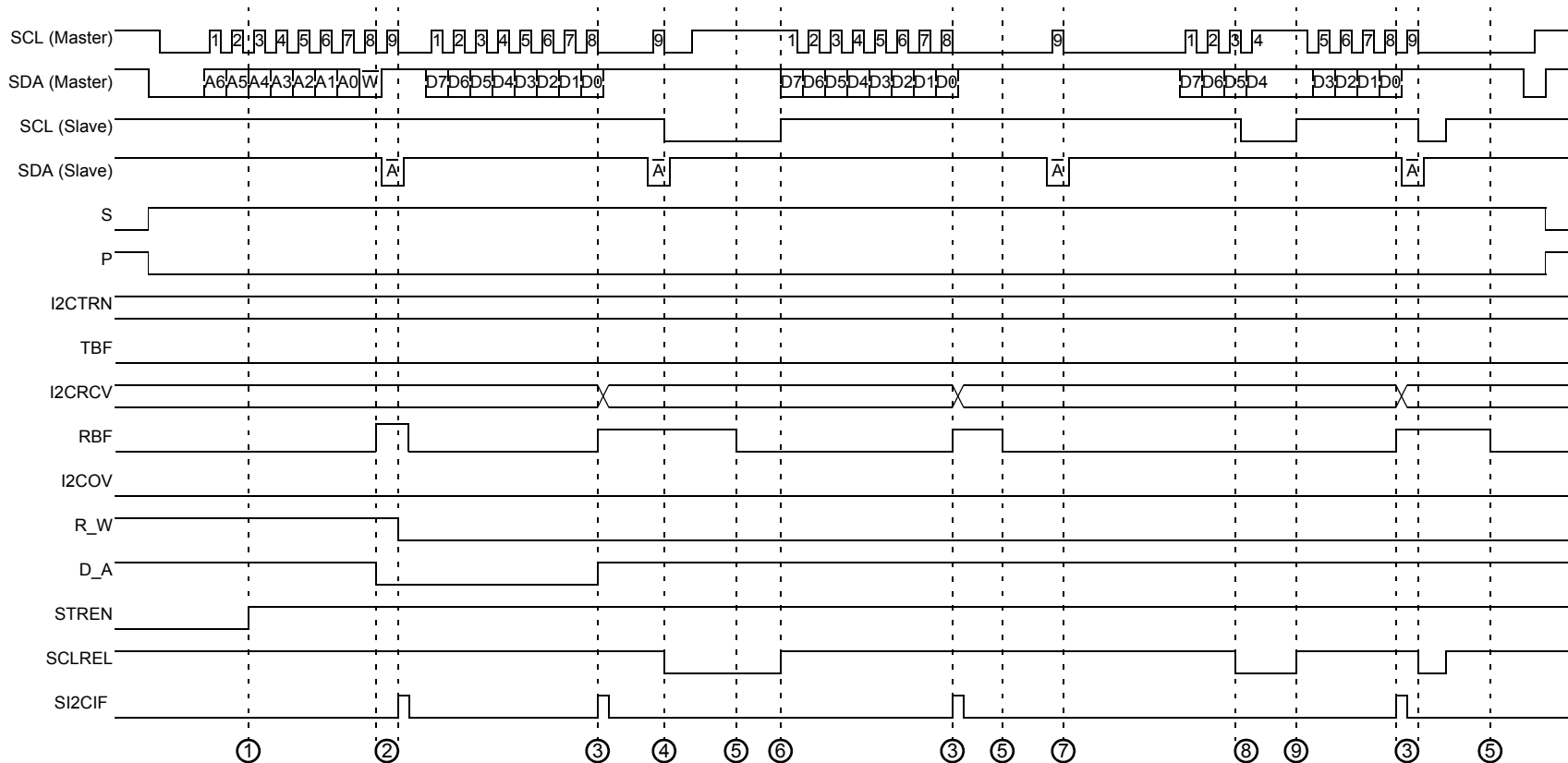
- ① Slave recognizes Start event, S and P bits set/clear accordingly.
- ② Slave receives address byte. High order address matches. Slave Acknowledges and generates interrupt. Address byte is moved to I2CRCV register and is read by user software to prevent buffer overflow.
- ③ Slave receives address byte. Low order address matches. Slave Acknowledges and generates interrupt. Address byte is moved to I2CRCV register and is read by user software to prevent buffer overflow.

- ④ Next received byte is message data. Byte moved to I2CRCV register, sets RBF. Slave Acknowledges and generates interrupt.
- ⑤ Software reads I2CRCV register. RBF bit clears.
- ⑥ Slave recognizes Stop event, S and P bits set/clear accordingly.

Figure 19-28: Slave Message (Write Data to Slave: 7-bit Address; Buffer Overflow; A10M = 0; GCEN = 0; IPMIEN = 0)

- ① Slave receives address byte. Address matches. Slave generates interrupt. Address byte is moved to I2CxRCV register and must be read by user software to prevent buffer overflow.
- ② Next received byte is message data. Byte moved to I2CxRCV register, sets RBF. Slave generates interrupt. Slave Acknowledges reception.
- ③ Next byte received before I2CxRCV is read by software. I2CxRCV register unchanged. I2COV overflow bit set. Slave generates interrupt. Slave sends NACK for reception.

- ④ Next byte also received before I2CxRCV is read by software. I2CxRCV register unchanged. Slave generates interrupt. Slave sends NACK for reception. The master state machine should not be programmed to send another byte after receiving a NACK in this manner. Instead, it should abort the transmission with a Stop condition or send a Repeated Start condition and attempt to retransmit the data.
- ⑤ Software reads I2CxRCV register. RBF bit clears.
- ⑥ Software clears I2COV bit. Reception will still not be able to proceed normally until the module sees a Stop/Repeated start bit. If neither of these conditions is met, an additional transmission will be received correctly, but send a NACK and set the I2COV bit again.

Figure 19-29: Slave Message (Write Data to Slave: 7-bit Address; Clock Stretching Enabled; A10M = 0; GCEN = 0; IPMIEN = 0)

- ① Software sets the STREN bit to enable clock stretching.
- ② Slave receives address byte. I2CRCV register is read by user software to prevent buffer overflow.
- ③ Next received byte is message data. Byte moved to I2CRCV register, sets RBF.
- ④ Because RBF = 1 at 9th clock, automatic clock stretch begins. Slave clears SCLREL bit. Slave pulls SCL line low to stretch clock.
- ⑤ Software reads I2CRCV register. RBF bit clears.
- ⑥ Software sets SCLREL bit to release clock.
- ⑦ Slave does not clear SCLREL because RBF = 0 at this time.
- ⑧ Software may clear SCLREL to cause a clock hold. Module must detect SCL low before asserting SCL low.
- ⑨ Software may set SCLREL to release a clock hold.

19.7.5 Sending Data to a Master Device

When the $\overline{R/\overline{W}}$ status bit of the incoming device address byte is '1' and an address match occurs, the $\overline{R/\overline{W}}$ status bit (I2CxSTAT<2>) is set. At this point, the master device is expecting the slave to respond by sending a byte of data. The contents of the byte are defined by the system protocol and are only transmitted by the slave module.

When the interrupt from the address detection occurs, the software can write a byte to the I2CxTRN register to start the data transmission.

The slave module sets the TBF status bit (I2CxSTAT<0>). The eight data bits are shifted out on the falling edge of the SCLx input. This ensures that the SDAx signal is valid during the SCLx high time. When all eight bits have been shifted out, the TBF status bit is cleared.

The slave module detects the Acknowledge from the master-receiver on the rising edge of the ninth SCLx clock.

If the SDAx line is low, indicating an Acknowledge (\overline{ACK}), the master is expecting more data and the message is not complete. The module generates a slave interrupt, and the ACKSTAT status bit (I2CxSTAT<15>) can be inspected to determine whether more data is being requested.

A slave interrupt is generated on the falling edge of the ninth SCLx clock. Software must check the status of the I2CxSTAT register and clear the SI2CxIF interrupt flag.

If the SDAx line is high, indicating a Not Acknowledge (NACK), the data transfer is complete. The slave module resets and generates an interrupt, and it waits for detection of the next Start bit.

19.7.5.1 WAIT STATES DURING SLAVE TRANSMISSIONS

During a slave transmission message, the master expects return data immediately after detection of the valid address with $\overline{R/\overline{W}} = 1$. Because of this, the slave module automatically generates a bus wait whenever the slave returns data.

The automatic wait occurs at the falling edge of the ninth SCLx clock of a valid device address byte or transmitted byte Acknowledged by the master, indicating expectation of more transmit data.

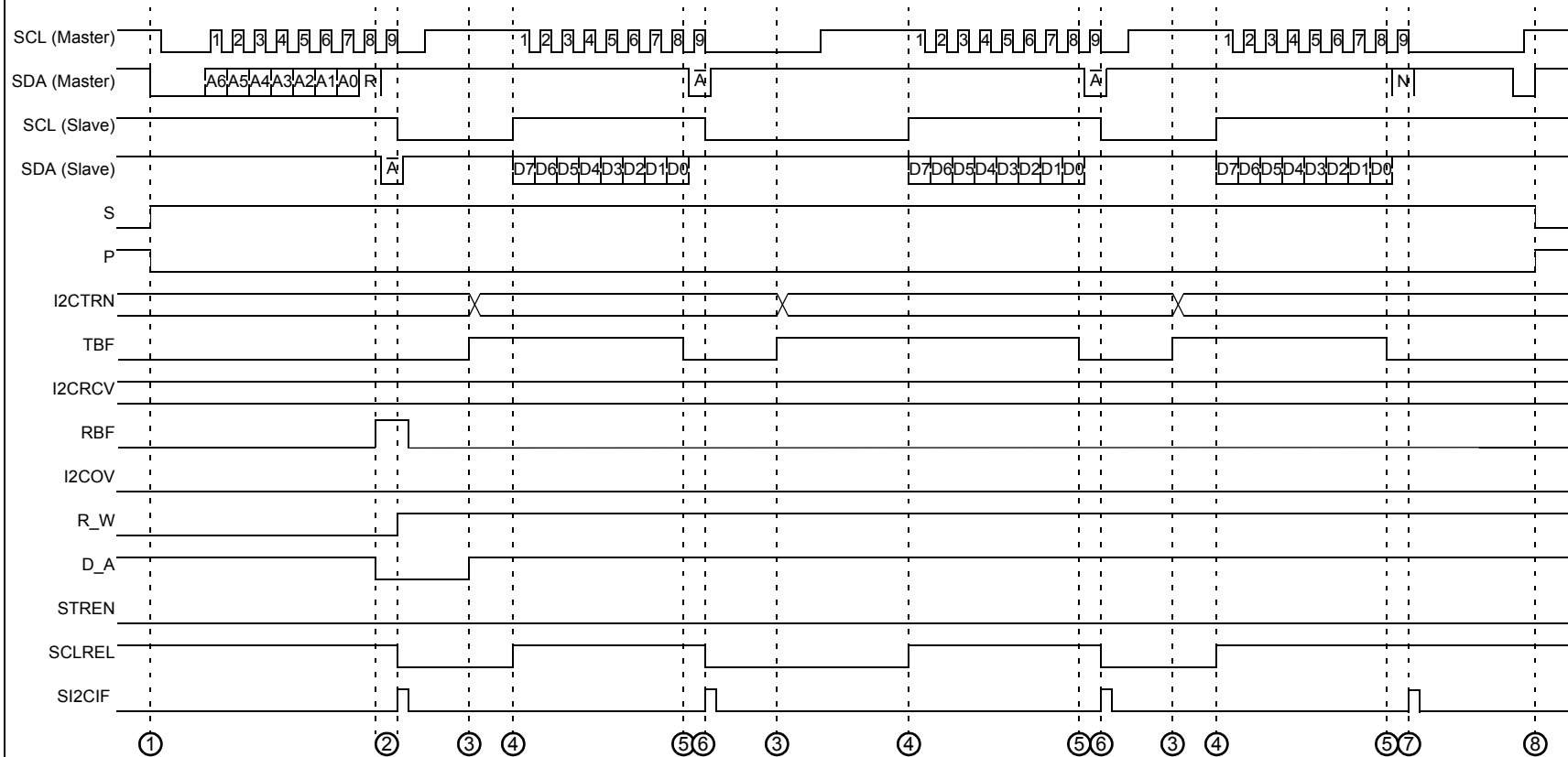
The slave module clears the SCLREL bit (I2CxCON<12>). Clearing the SCLREL bit causes the slave module to pull the SCLx line low, initiating a wait. The SCLx clock of the master and slave synchronizes as described in **19.6.2 "Master Clock Synchronization"**.

When the software loads the I2CxTRN register and is ready to resume transmission, the software sets SCLREL. This causes the slave module to release the SCLx line and the master resumes clocking.

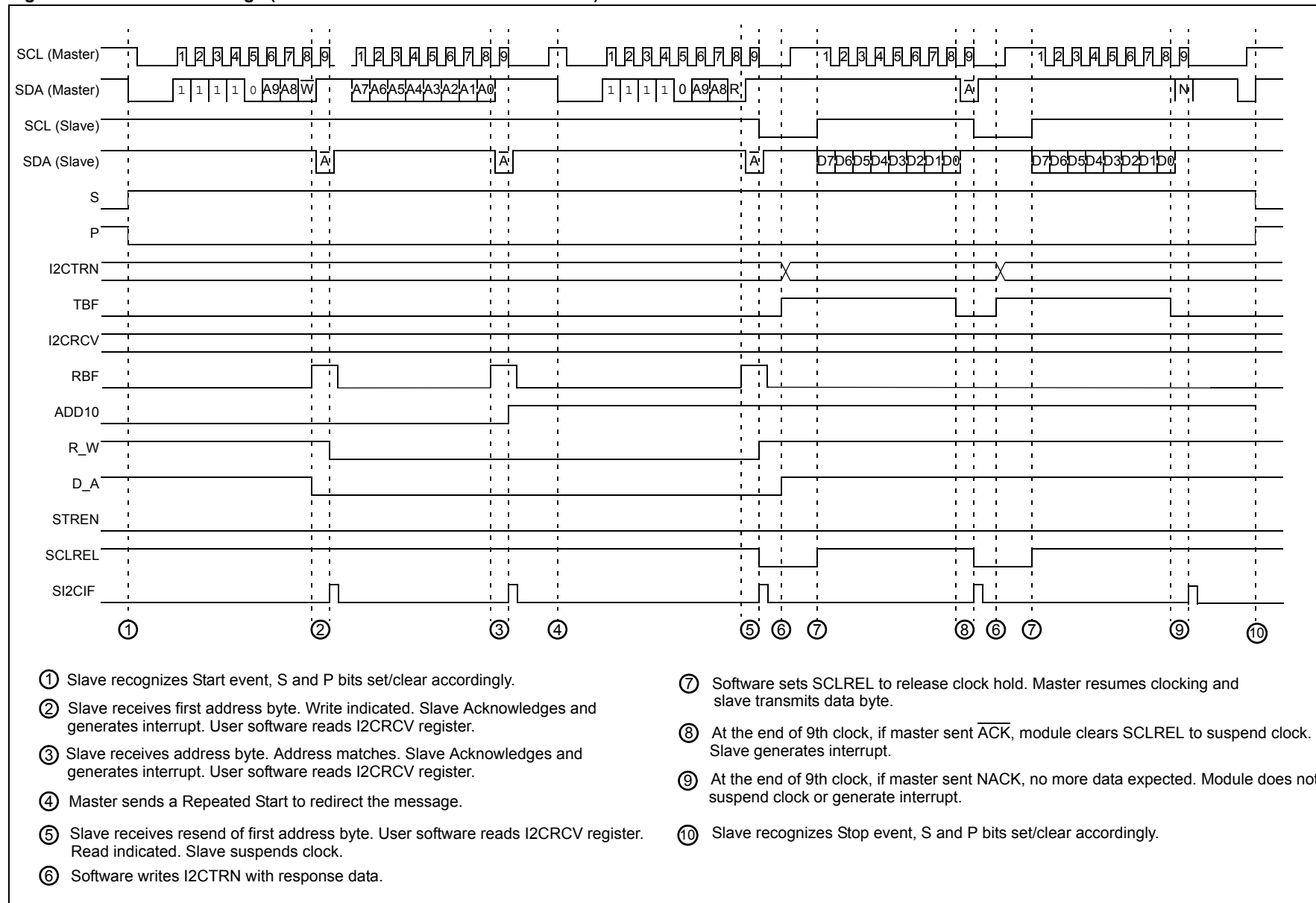
19.7.5.2 EXAMPLE MESSAGES OF SLAVE TRANSMISSION

Slave transmissions for 7-bit address messages are illustrated in Figure 19-30. When the address matches and the $\overline{R/\overline{W}}$ status bit of the address indicates a slave transmission, the module automatically initiates clock stretching by clearing the SCLREL bit and generates an interrupt to indicate a response byte is required. The software writes the response byte into the I2CxTRN register. As the transmission completes, the master responds with an Acknowledge. If the master replies with an \overline{ACK} , the master expects more data and the module again clears the SCLREL bit and generates another interrupt. If the master responds with a NACK, no more data is expected. The module does not stretch the clock; an interrupt is generated.

Slave transmissions for 10-bit address messages require the slave to first recognize a 10-bit address. Because the master must send two bytes for the address, the $\overline{R/\overline{W}}$ status bit in the first byte of the address specifies a write. To change the message to a read, the master sends a Repeated Start and repeats the first byte of the address with the $\overline{R/\overline{W}}$ status bit specifying a read. At this point, the slave transmission begins as illustrated in Figure 19-31.

Figure 19-30: Slave Message (Read Data from Slave: 7-bit Address)

- ① Slave recognizes Start event, S and P bits set/clear accordingly.
- ② Slave receives address byte. Address matches. Slave generates interrupt. Address byte is moved to I2CRCV register and is read by user software to prevent buffer overflow. R_W = 1 to indicate read from slave. SCLREL = 0 to suspend master clock.
- ③ Software writes I2CTR with response data. TBF = 1 indicates that buffer is full. Writing I2CTR sets D_A, indicating data byte.
- ④ Software sets SCLREL to release clock hold. Master resumes clocking and slave transmits data byte.
- ⑤ After last bit, module clears TBF bit indicating buffer is available for next byte.
- ⑥ At the end of 9th clock, if master sent $\overline{\text{ACK}}$, module clears SCLREL to suspend clock. Slave generates interrupt.
- ⑦ At the end of 9th clock, if master sent NACK, no more data expected. Module does not suspend clock and will generate an interrupt.
- ⑧ Slave recognizes Stop event, S and P bits set/clear accordingly.

Figure 19-31: Slave Message (Read Data from Slave: 10-bit Address)

19.8 CONNECTION CONSIDERATIONS FOR I²C-BUS

Because the I²C-bus is a wired AND bus connection, pull-up resistors on the bus are required, indicated as R_P in Figure 19-32. Series resistors, indicated as R_S, are optional and used to improve ESD susceptibility. The values of resistors, R_P and R_S, depend on the following parameters:

- Supply voltage
- Bus capacitance
- Number of connected devices (input current + leakage current)
- Input level selection (I²C or SMBus)

Because the device must be able to pull the bus low against R_P, current drawn by R_P must be greater than the I/O pin minimum sink current, I_{OL} of 6.6 mA at V_{OLMAX} = 0.4V, for the device output stage. For example, with a supply voltage of V_{DD} = 3V + 10%:

Equation 19-2:

$$R_{P\min} = (V_{DD\max} - V_{OL\max})/I_{OL} = (3.3V - 0.6V)/8.5 \text{ mA} = 439\Omega$$

In a 400 kHz system, a minimum rise time specification of 300 ns exists; in a 100 kHz system, the specification is 1000 ns. Because R_P must pull the bus up against the total capacitance, C_B, with a maximum rise time of 300 ns to (V_{DD} – 0.7V), the maximum resistance for the pull-up (R_{PMAX}) must be less than:

Equation 19-3:

$$-tR/(C_B * \ln(1 - (V_{DD\max} - V_{IL\max}))) = -300 \text{ ns}/(100 \text{ pF} * \ln(1 - (0.99 - 3.3))), \text{ or } 2.5 \text{ k}\Omega$$

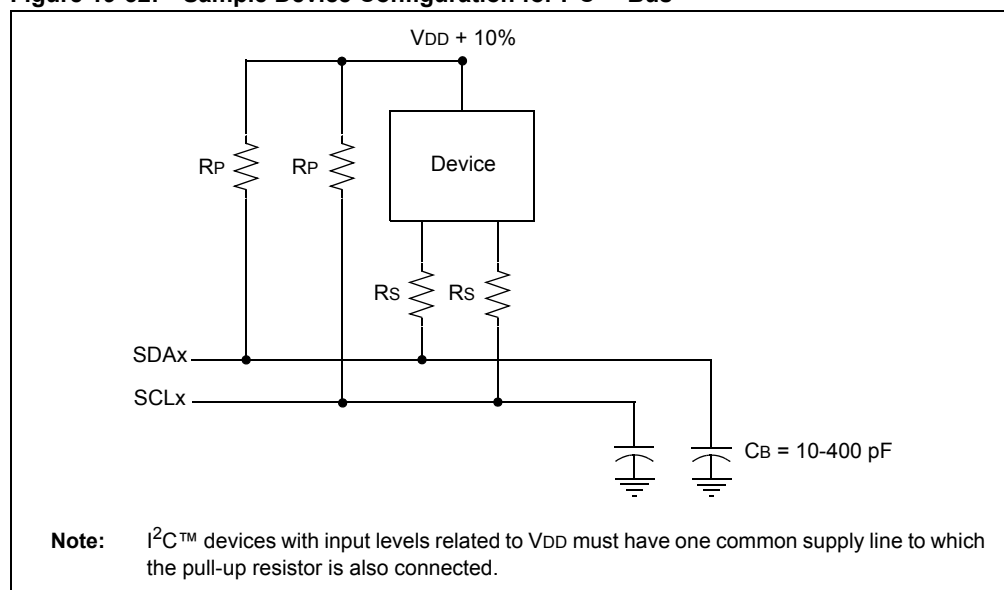
The maximum value for R_S is determined by the desired noise margin for the low level. R_S cannot drop enough voltage to make the device V_{OL} plus the voltage across R_S more than the maximum V_{IL}. Mathematically:

Equation 19-4:

$$R_{S\max} = (V_{IL\max} - V_{OL\max})/I_{OL\max} = (0.3 V_{DD} - 0.4)/6.6 \text{ mA} = 89\Omega$$

The SCLx clock input must have a minimum high and low time for proper operation. The high and low times of the I²C-bus specification, as well as the requirements of the I²C module, are shown in the “Electrical Characteristics” section of the specific device data sheet.

Figure 19-32: Sample Device Configuration for I²C™-Bus



19.8.1 Integrated Signal Conditioning

The SCLx and SDAx pins have an input glitch filter. The I²C-bus requires this filter in both the 100 kHz and 400 kHz systems.

When operating on a 400 kHz bus, the I²C-bus specification requires a slew rate control of the device pin output. This slew rate control is integrated into the device. If the DISSLW bit (I2CxCON<9>) is cleared, the slew rate control is active. For other bus speeds, the I²C-bus specification does not require slew rate control and the DISSLW bit should be set.

Some system implementations of I²C busses require different input levels for VILMAX and VIHMIN. In a normal I²C system, VILMAX is 0.3 VDD; VIHMIN is 0.7 VDD. By contrast, in an SMBus system, VILMAX is set at 0.8V, while VIHMIN is set at 2.1V.

The SMEN bit (I2CxCON<8>) controls the input levels. Setting SMEN (= 1) changes the input levels to SMBus specifications.

19.9 MODULE OPERATION DURING PWRSAV INSTRUCTION

19.9.1 Sleep Mode in Slave Mode

The module will continue full operation if Sleep mode is entered while the module is configured in Slave mode. As all the bit shifting is done with reference to the external SCL signal, all data transmit and receive operations continue. The module is then required to assert an asynchronous interrupt as needed. As per the slave I²C behavior, a slave interrupt is generated only on an address match. So, when an I²C slave is in Sleep mode and receives a message from the master, the clock required to match the received address is derived from the master. Only on an address match is the interrupt generated, and the device can wake up provided the interrupt has been enabled and an ISR has been defined.

19.9.2 Sleep Mode in Master Mode

If Sleep occurs in the middle of a master transmission, and the state machine is partially into a transmission as the clocks stop, the behavior of the module will be undefined. Similarly, if Sleep occurs in the middle of a master reception, the module behavior will also be undefined. The transmitter and receiver will stop at Sleep when in Master mode. Register contents are not affected by going into Sleep mode or coming out of Sleep mode; there is no automatic way to prevent Sleep entry if a transmission or reception is pending. The user software must synchronize Sleep entry with I²C operation to avoid undefined module behavior.

19.9.3 When the Device Enters Idle Mode

When the device executes a PWRSAV 1 instruction, the device enters Idle mode. The module enters a power-saving state in Idle mode, depending on the I2CSIDL bit (I2CxCON<13>). If I2CSIDL = 1, the module enters a power-saving mode similar to actions while entering Sleep mode. If I2CSIDL = 0, the module does not enter a power-saving mode and continues to operate normally.

19.10 PERIPHERAL MODULE DISABLE (PMD) REGISTERS

The Peripheral Module Disable (PMDx) registers provide a method to disable the I²C module(s) by stopping all clock sources supplied to that module. When a peripheral is disabled via the appropriate PMDx control bit, the peripheral is in a minimum power consumption state. The control and status registers associated with the peripheral are also disabled, so writes to those registers will have no effect and read values will be invalid. A peripheral module is only enabled if the I2CxMD bit in the PMDx register is cleared.

19.11 EFFECTS OF A RESET

A Reset disables the I²C module and terminates any active or pending message activity. See the I2CxCON (Register 19-1) and I2CxSTAT (Register 19-2) register definitions for the Reset conditions of these registers.

19.12 REGISTER MAPS

A summary of the registers associated with the dsPIC33E/PIC24E device family's I²C module is provided in Table 19-5.

Table 19-5: I2Cx Register Map

File Name	Bit 15	Bit 14	Bit 13	Bit 12	Bit 11	Bit 10	Bit 9	Bit 8	Bit 7	Bit 6	Bit 5	Bit 4	Bit 3	Bit 2	Bit 1	Bit 0	All Resets
I2CxRCV	—	—	—	—	—	—	—	—	Receive Register								0000
I2CxTRN	—	—	—	—	—	—	—	—	Transmit Register								00FF
I2CxBRG	—	—	—	—	—	—	—	Baud Rate Generator									0000
I2CxCON	I2CEN	—	I2CSIDL	SCLREL	IPMIEN	A10M	DISSLW	SMEN	GCEN	STREN	ACKDT	ACKEN	RCEN	PEN	RSEN	SEN	1000
I2CxSTAT	ACKSTAT	TRSTAT	—	—	—	BCL	GCSTAT	ADD10	IWCOL	I2COV	D/ \bar{A}	P	S	R/ \bar{W}	RBF	TBF	0000
I2CxADD	—	—	—	—	—	—	Address Register										0000
I2CxMSK	—	—	—	—	—	—	Address Mask										0000

Legend: — = unimplemented, read as '0'. Reset values are shown in hexadecimal.

19.13 DESIGN TIPS

Question 1: *I am operating as a bus master and transmitting data. Why do slave and receive interrupts keep occurring at the same time?*

Answer: The master and slave circuits are independent. The slave module receives events from the bus sent by the master.

Question 2: *I am operating as a slave and I write data to the I2CxTRN register. Why is data not being transmitted?*

Answer: The slave enters an automatic wait when preparing to transmit. Ensure that you set the SCLREL bit (I2CxCON<12>) to release the I²C clock.

Question 3: *How do I tell what state the master module is in?*

Answer: The state of the master module can be determined by checking the values of the SEN, RSEN, PEN, RCEN and ACKEN bits in the I2CxCON register and the TRSTAT bit value in the I2CxSTAT register. If all bits are '0', the module is idle.

Question 4: *Operating as a slave, I receive a byte while STREN = 0. What should the software do if it cannot process the byte before the next one is received?*

Answer: Because STREN was '0', the module did not generate an automatic wait on the received byte. However, the software may, at any time during the message, set STREN and then clear SCLREL. This will cause a wait on the next opportunity to synchronize the SCLx clock.

Question 5: *My I²C system is a multi-master system. Why are my messages being corrupted when I attempt to send them?*

Answer: In a multi-master system, other masters may cause bus collisions. In the Interrupt Service Routine (ISR) for the master, check the BCL status bit (I2CxSTAT<10>) to ensure that the operation completed without a collision. If a collision is detected, the message must be re-sent from the beginning.

Question 6: *My I²C system is a multi-master system. How can I tell when it is okay to begin a message?*

Answer: Look at the S status bit (I2CxSTAT<3>). If S = 0, the bus is idle.

Question 7: *I tried to send a Start condition on the bus, and then transmit a byte by writing to the I2CxTRN register. The byte did not get transmitted. Why?*

Answer: You must wait for each event on the I²C-bus to complete before starting the next one. In this case, you should poll the SEN bit (I2CxCON<0>) to determine when the Start event completed or wait for the master I²C interrupt before data is written to the I2CxTRN register.

19.14 RELATED APPLICATION NOTES

This section lists application notes that are related to this section of the manual. These application notes may not be written specifically for the dsPIC33E/PIC24E device family, but the concepts are pertinent and could be used with modification and possible limitations. The current application notes related to the Inter-Integrated Circuit™ (I²C™) module include the following:

Title	Application Note #
Use of the SSP Module in the I ² C™ Multi-Master Environment	AN578
Using the PIC® Devices' SSP and MSSP Modules for Slave I ² C™ Communication	AN734
Using the PIC® MSSP Module for Master I ² C™ Communications	AN735
An I ² C™ Network Protocol for Environmental Monitoring	AN736

Note: Please visit the Microchip web site (www.microchip.com) for additional application notes and code examples for the dsPIC33E/PIC24E family of devices.

19.15 REVISION HISTORY

Revision A (September 2008)

This is the initial released version of this document.

Revision B (August 2010)

This revision includes the following changes:

- Added notes to IPMIEN bit in Register 19-1
- Corrected the last sentence in **19.7.5.2 “Example Messages of Slave Transmission”** to indicate that an interrupt is generated by the module
- Updated **19.9.1 “Sleep Mode in Slave Mode”**
- Added three notes in **19.7.3.6 “Receiving All Addresses (IPMI Operation)”**
- Updated Equation 19-1
- Added a pulse to the MI2CxIF interrupt flag in Figure 19-15
- Minor changes to the text and formatting have been incorporated throughout the document

NOTES:

Note the following details of the code protection feature on Microchip devices:

- Microchip products meet the specification contained in their particular Microchip Data Sheet.
- Microchip believes that its family of products is one of the most secure families of its kind on the market today, when used in the intended manner and under normal conditions.
- There are dishonest and possibly illegal methods used to breach the code protection feature. All of these methods, to our knowledge, require using the Microchip products in a manner outside the operating specifications contained in Microchip's Data Sheets. Most likely, the person doing so is engaged in theft of intellectual property.
- Microchip is willing to work with the customer who is concerned about the integrity of their code.
- Neither Microchip nor any other semiconductor manufacturer can guarantee the security of their code. Code protection does not mean that we are guaranteeing the product as "unbreakable."

Code protection is constantly evolving. We at Microchip are committed to continuously improving the code protection features of our products. Attempts to break Microchip's code protection feature may be a violation of the Digital Millennium Copyright Act. If such acts allow unauthorized access to your software or other copyrighted work, you may have a right to sue for relief under that Act.

Information contained in this publication regarding device applications and the like is provided only for your convenience and may be superseded by updates. It is your responsibility to ensure that your application meets with your specifications. MICROCHIP MAKES NO REPRESENTATIONS OR WARRANTIES OF ANY KIND WHETHER EXPRESS OR IMPLIED, WRITTEN OR ORAL, STATUTORY OR OTHERWISE, RELATED TO THE INFORMATION, INCLUDING BUT NOT LIMITED TO ITS CONDITION, QUALITY, PERFORMANCE, MERCHANTABILITY OR FITNESS FOR PURPOSE. Microchip disclaims all liability arising from this information and its use. Use of Microchip devices in life support and/or safety applications is entirely at the buyer's risk, and the buyer agrees to defend, indemnify and hold harmless Microchip from any and all damages, claims, suits, or expenses resulting from such use. No licenses are conveyed, implicitly or otherwise, under any Microchip intellectual property rights.

Trademarks

The Microchip name and logo, the Microchip logo, dsPIC, KEELOQ, KEELOQ logo, MPLAB, PIC, PICmicro, PICSTART, PIC³² logo, rfPIC and UNI/O are registered trademarks of Microchip Technology Incorporated in the U.S.A. and other countries.


FilterLab, Hampshire, HI-TECH C, Linear Active Thermistor, MXDEV, MXLAB, SEEVAL and The Embedded Control Solutions Company are registered trademarks of Microchip Technology Incorporated in the U.S.A.

Analog-for-the-Digital Age, Application Maestro, CodeGuard, dsPICDEM, dsPICDEM.net, dsPICworks, dsSPEAK, ECAN, ECONOMONITOR, FanSense, HI-TIDE, In-Circuit Serial Programming, ICSP, Mindi, MiWi, MPASM, MPLAB Certified logo, MPLIB, MPLINK, mTouch, Octopus, Omniscient Code Generation, PICC, PICC-18, PICDEM, PICDEM.net, PICkit, PICTail, REAL ICE, rLAB, Select Mode, Total Endurance, TSHARC, UniWinDriver, WiperLock and ZENA are trademarks of Microchip Technology Incorporated in the U.S.A. and other countries.

SQTP is a service mark of Microchip Technology Incorporated in the U.S.A.

All other trademarks mentioned herein are property of their respective companies.

© 2010, Microchip Technology Incorporated, Printed in the U.S.A., All Rights Reserved.

 Printed on recycled paper.

ISBN: 978-1-60932-441-4

Microchip received ISO/TS-16949:2002 certification for its worldwide headquarters, design and wafer fabrication facilities in Chandler and Tempe, Arizona; Gresham, Oregon and design centers in California and India. The Company's quality system processes and procedures are for its PIC® MCUs and dsPIC® DSCs, KEELOQ® code hopping devices, Serial EEPROMs, microperipherals, nonvolatile memory and analog products. In addition, Microchip's quality system for the design and manufacture of development systems is ISO 9001:2000 certified.

QUALITY MANAGEMENT SYSTEM
CERTIFIED BY DNV
== ISO/TS 16949:2002 ==



WORLDWIDE SALES AND SERVICE

AMERICAS

Corporate Office

2355 West Chandler Blvd.
Chandler, AZ 85224-6199
Tel: 480-792-7200
Fax: 480-792-7277
Technical Support:
<http://support.microchip.com>
Web Address:
www.microchip.com

Atlanta

Duluth, GA
Tel: 678-957-9614
Fax: 678-957-1455

Boston

Westborough, MA
Tel: 774-760-0087
Fax: 774-760-0088

Chicago

Itasca, IL
Tel: 630-285-0071
Fax: 630-285-0075

Cleveland

Independence, OH
Tel: 216-447-0464
Fax: 216-447-0643

Dallas

Addison, TX
Tel: 972-818-7423
Fax: 972-818-2924

Detroit

Farmington Hills, MI
Tel: 248-538-2250
Fax: 248-538-2260

Kokomo

Kokomo, IN
Tel: 765-864-8360
Fax: 765-864-8387

Los Angeles

Mission Viejo, CA
Tel: 949-462-9523
Fax: 949-462-9608

Santa Clara

Santa Clara, CA
Tel: 408-961-6444
Fax: 408-961-6445

Toronto

Mississauga, Ontario,
Canada
Tel: 905-673-0699
Fax: 905-673-6509

ASIA/PACIFIC

Asia Pacific Office

Suites 3707-14, 37th Floor
Tower 6, The Gateway
Harbour City, Kowloon
Hong Kong
Tel: 852-2401-1200
Fax: 852-2401-3431

Australia - Sydney

Tel: 61-2-9868-6733
Fax: 61-2-9868-6755

China - Beijing

Tel: 86-10-8528-2100
Fax: 86-10-8528-2104

China - Chengdu

Tel: 86-28-8665-5511
Fax: 86-28-8665-7889

China - Chongqing

Tel: 86-23-8980-9588
Fax: 86-23-8980-9500

China - Hong Kong SAR

Tel: 852-2401-1200
Fax: 852-2401-3431

China - Nanjing

Tel: 86-25-8473-2460
Fax: 86-25-8473-2470

China - Qingdao

Tel: 86-532-8502-7355
Fax: 86-532-8502-7205

China - Shanghai

Tel: 86-21-5407-5533
Fax: 86-21-5407-5066

China - Shenyang

Tel: 86-24-2334-2829
Fax: 86-24-2334-2393

China - Shenzhen

Tel: 86-755-8203-2660
Fax: 86-755-8203-1760

China - Wuhan

Tel: 86-27-5980-5300
Fax: 86-27-5980-5118

China - Xian

Tel: 86-29-8833-7252
Fax: 86-29-8833-7256

China - Xiamen

Tel: 86-592-2388138
Fax: 86-592-2388130

China - Zhuhai

Tel: 86-756-3210040
Fax: 86-756-3210049

ASIA/PACIFIC

India - Bangalore

Tel: 91-80-3090-4444
Fax: 91-80-3090-4123

India - New Delhi

Tel: 91-11-4160-8631
Fax: 91-11-4160-8632

India - Pune

Tel: 91-20-2566-1512
Fax: 91-20-2566-1513

Japan - Yokohama

Tel: 81-45-471- 6166
Fax: 81-45-471-6122

Korea - Daegu

Tel: 82-53-744-4301
Fax: 82-53-744-4302

Korea - Seoul

Tel: 82-2-554-7200
Fax: 82-2-558-5932 or
82-2-558-5934

Malaysia - Kuala Lumpur

Tel: 60-3-6201-9857
Fax: 60-3-6201-9859

Malaysia - Penang

Tel: 60-4-227-8870
Fax: 60-4-227-4068

Philippines - Manila

Tel: 63-2-634-9065
Fax: 63-2-634-9069

Singapore

Tel: 65-6334-8870
Fax: 65-6334-8850

Taiwan - Hsin Chu

Tel: 886-3-6578-300
Fax: 886-3-6578-370

Taiwan - Kaohsiung

Tel: 886-7-213-7830
Fax: 886-7-330-9305

Taiwan - Taipei

Tel: 886-2-2500-6610
Fax: 886-2-2508-0102

Thailand - Bangkok

Tel: 66-2-694-1351
Fax: 66-2-694-1350

EUROPE

Austria - Wels

Tel: 43-7242-2244-39
Fax: 43-7242-2244-393

Denmark - Copenhagen

Tel: 45-4450-2828
Fax: 45-4485-2829

France - Paris

Tel: 33-1-69-53-63-20
Fax: 33-1-69-30-90-79

Germany - Munich

Tel: 49-89-627-144-0
Fax: 49-89-627-144-44

Italy - Milan

Tel: 39-0331-742611
Fax: 39-0331-466781

Netherlands - Druenen

Tel: 31-416-690399
Fax: 31-416-690340

Spain - Madrid

Tel: 34-91-708-08-90
Fax: 34-91-708-08-91

UK - Wokingham

Tel: 44-118-921-5869
Fax: 44-118-921-5820

07/15/10